

APP CRS **075°**
 Rwy Ldg **4000**
 TDZE **205**
 Apt Elev **221**

RNAV (GPS) RWY 9
 MASSENA INTL-RICHARDS FLD (MSS)

RNP APCH - GPS.

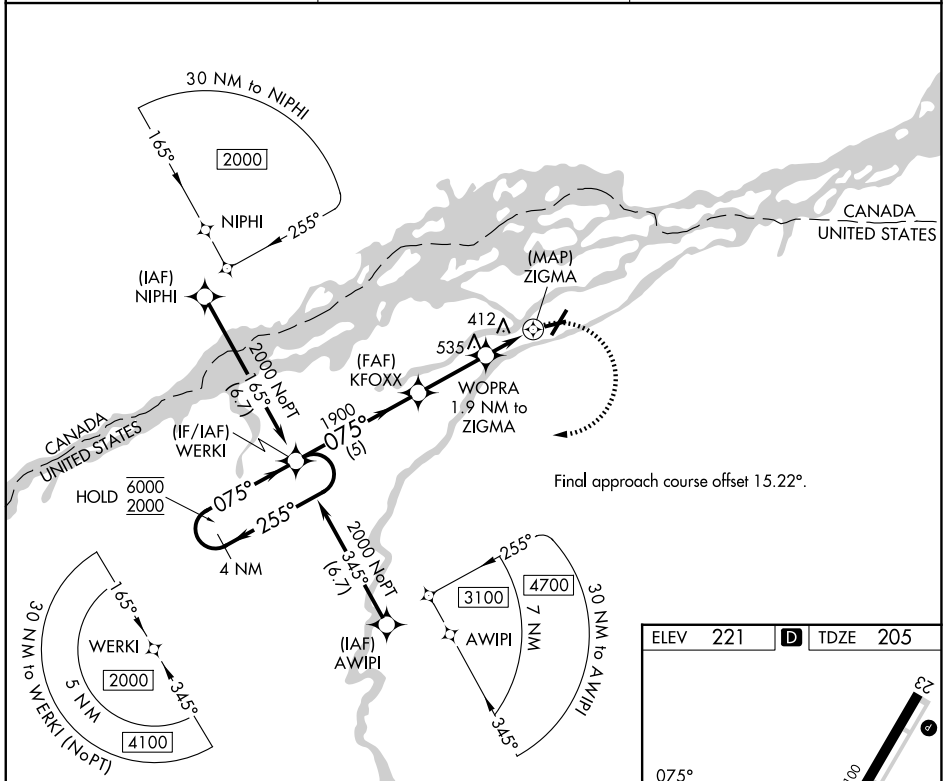
⚠ Rwy 9 helicopter visibility reduction below 1 SM NA. Straight-in Rwy 9 NA at night, Circling Rwy 9, 23, 27 NA at night. When local altimeter setting not received, use PTD altimeter setting and increase all MDAs 80 feet and visibility Cats C and D ¼ SM, and increase Circling visibility Cats C and D ¼ SM.

MISSED APPROACH: Climbing right turn to 2000 direct WERKI and hold.

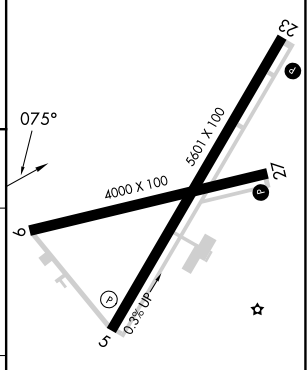
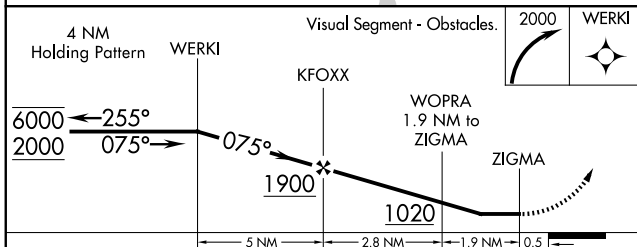
ASOS **128.075**

BOSTON CENTER **135.25 377.1**

UNICOM **123.0 (CTAF) 0**



ELEV 221 **D** TDZE 205



CATEGORY	A	B	C	D
LNVA MDA	680-1	475 (500-1)	680-1 3/8	475 (500-1 3/8)
CIRCLING	740-1	519 (600-1)	880-1 3/4 659 (700-1 3/4)	880-2 659 (700-2)

REIL Rwy 5, 9 and 27 **0**
 HIRL Rwy 5-23 **0**
 MIRL Rwy 9-27 **0**

NE-2, 14 MAY 2026 to 11 JUN 2026

NE-2, 14 MAY 2026 to 11 JUN 2026