

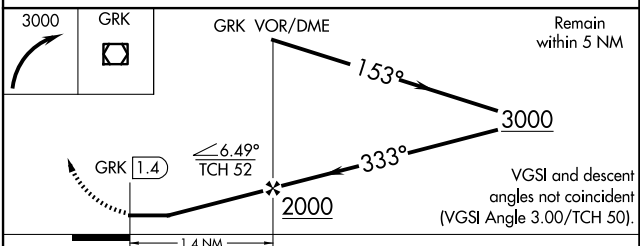
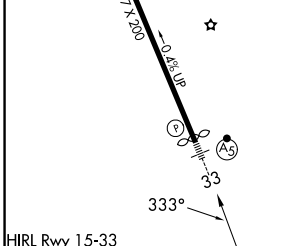
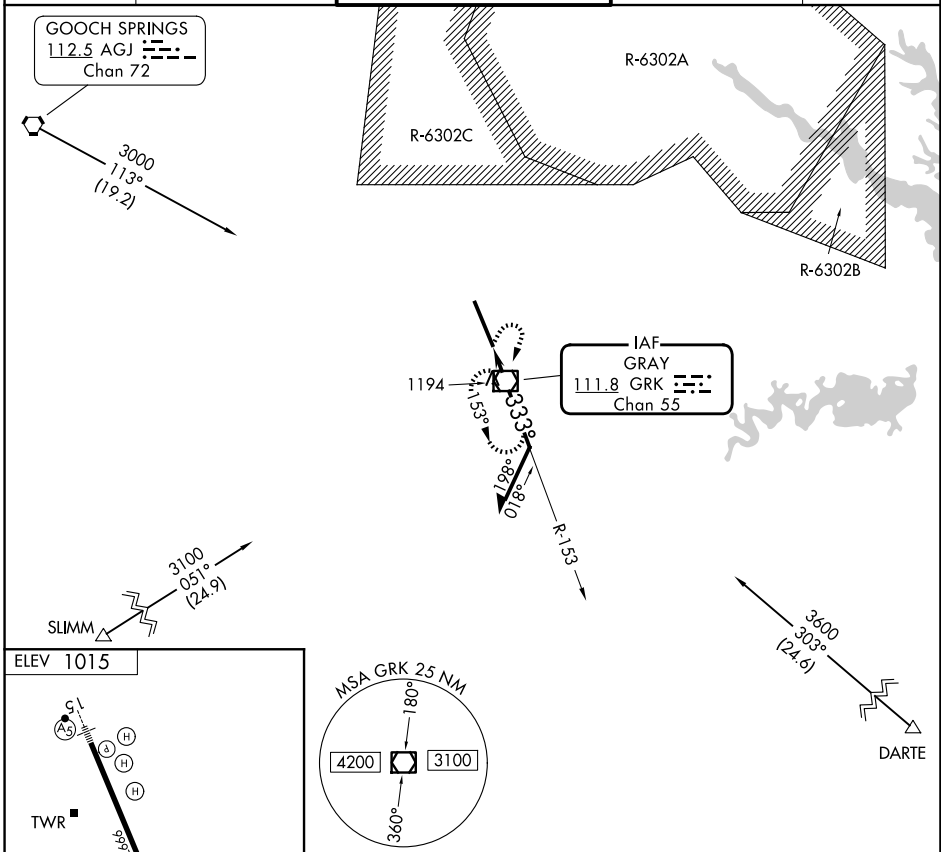
VOR/DME GRK 111.8 Chan 55	APP CRS 333°	Rwy Ldg TDZE Apt Elev 9803 N/A 1015
---	------------------------	--

COPTER VOR RWY 33

ROBERT GRAY AAF (GRK)

		MISSED APPROACH: Climbing right turn to 3000 direct GRK VOR/DME and hold.
--	--	---

ATIS 124.9	GRAY APP CON 120.075 323.15	GRAY TOWER 120.75 (CTAF) 285.5	GND CON 121.8 279.5	CLNC DEL 126.2 251.1
----------------------	---------------------------------------	--	-------------------------------	--------------------------------



FAF to MAP 1.4 NM					CATEGORY	COPTER	
Knots	45	60	75	90	H-33	1460-¼ 465 (500-¼)	
Min:Sec	1:52	1:24	1:07	0:56			

SC-3, 14 MAY 2026 to 11 JUN 2026

SC-3, 14 MAY 2026 to 11 JUN 2026