

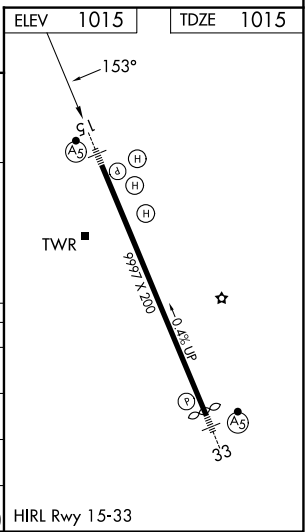
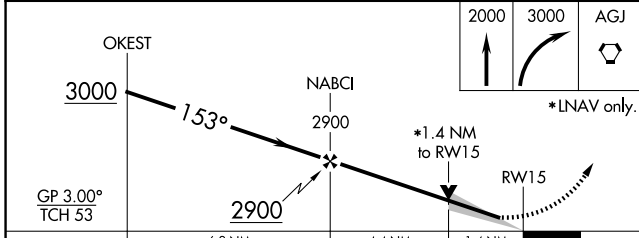
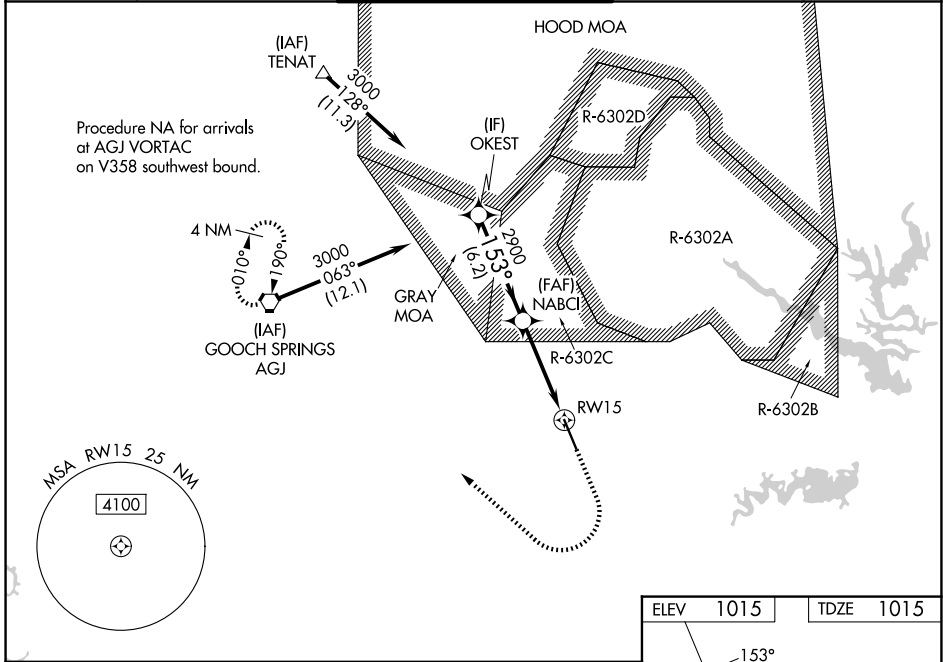
WAAS CH 78099 W15A	APP CRS 153°	Rwy Ldg 9997 TDZE 1015 Apt Elev 1015
----------------------------------------	------------------------	-----------------------------------------------------------------

RNAV (GPS) RWY 15

ROBERT GRAY AAF (GRK)

RNP APCH - GPS.	MALSR	MISSED APPROACH: Climb to 2000 then climbing right turn to 3000 direct AGJ VORTAC and hold.
<p>▼ For uncompensated Baro-VNAV systems, LNAV/VNAV NA below -17°C or above 54°C. Circling NA west of Rwy 15-33.</p> <p>▲ ASR/PAR For inop ALS, increase LPV Cat E visibility to RVR 4000, LNAV/VNAV all Cats visibility to 1 3/8 SM and LNAV Cats C/D/E visibility to 1 3/8 SM. # RVR 1800 authorized with the use of FD or AP or HUD to DA.</p>		

ATIS 124.9	GRAY APP CON 120.075 323.15	GRAY TOWER 120.75(CTAF) 285.5	GND CON 121.8 279.5	CLNC DEL 126.2 251.1
----------------------	---------------------------------------	-----------------------------------------	-------------------------------	--------------------------------



CATEGORY	A	B	C	D	E
LPV DA #	1215/24		200 (200-1/2)		
LNAV/VNAV DA	1531/55		516 (600-1)		
LNAV MDA	1520/24 505 (600-1/2)		1520/55 505 (600-1)		
CIRCLING	1540-1 525 (600-1)		1560-1 1/2 545 (600-1 1/2)	1620-2 605 (700-2)	1740-2 1/2 725 (800-2 1/2)

SC-3, 14 MAY 2026 to 11 JUN 2026

SC-3, 14 MAY 2026 to 11 JUN 2026