

WAAS CH <b>86212</b> <b>W22A</b>	APP CRS <b>219°</b>	Rwy Ldg TDZE <b>322</b> Apt Elev <b>322</b>	<b>8001</b>
--	------------------------	---	-------------

# RNAV (GPS) RWY 22

MILLINGTON/MEMPHIS (NQA)

RNP APCH - GPS.

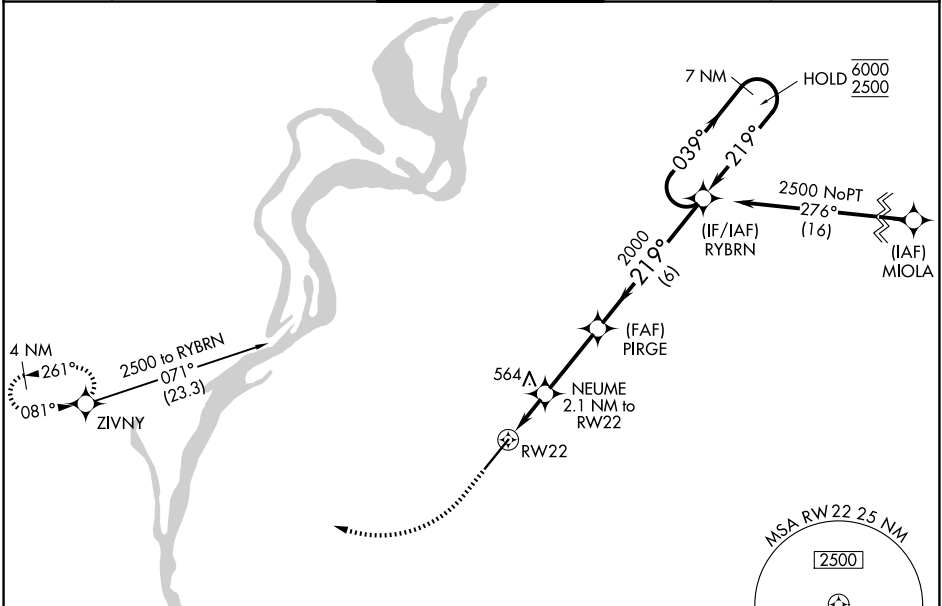
- ▼ For uncompensated Baro-VNAV systems, LNAV/VNAV NA below -15°C or above 54°C.
- ▲ For inop ALS, increase LPV Cat E visibility to ¾ SM, LNAV/VNAV all Cats visibility to 1½ SM, and LNAV Cat E visibility to 1¾ SM.

MALSR



**MISSED APPROACH:**  
Climb to 840 then climbing right turn to 2500 direct ZIVNY and hold.

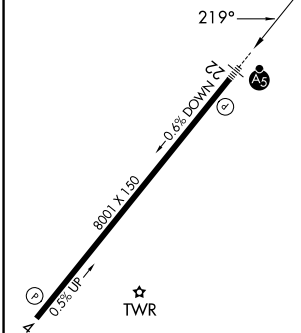
AWOS-3 <b>118.925</b>	MEMPHIS APP CON <b>119.1 291.6</b> <b>125.8 338.3</b> (176°-355°) (356°-175°)	MILLINGTON TOWER ★ <b>120.25</b> (CTAF) <b>0 340.2</b>	GND CON <b>121.375</b>	UNICOM <b>122.95</b>
--------------------------	--	---	---------------------------	-------------------------



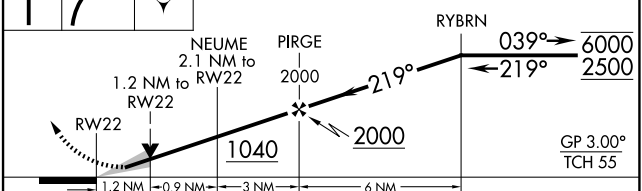
SE-1, 14 MAY 2026 to 11 JUN 2026

SE-1, 14 MAY 2026 to 11 JUN 2026

ELEV 322	TDZE 322
----------	----------



840	2500	ZIVNY	VGSI and RNAV glidepath not coincident (VGSI Angle 3.00/TCH 67).	7 NM	7 NM Holding Pattern
-----	------	-------	--	------	----------------------



CATEGORY	A	B	C	D	E
LPV DA	522-½		200 (200-½)		
LNAV/VNAV DA	784-1		462 (500-1)		
LNAV MDA	780-½	458 (500-½)	780-¾	458 (500-¾)	
CIRCLING	800-1 478 (500-1)	820-1 498 (500-1)	920-½ 598 (600-½)	960-2 638 (700-2)	960-2¼ 638 (700-2¼)

REIL Rwy 22  
REIL Rwy 4  
HIRL Rwy 4-22