

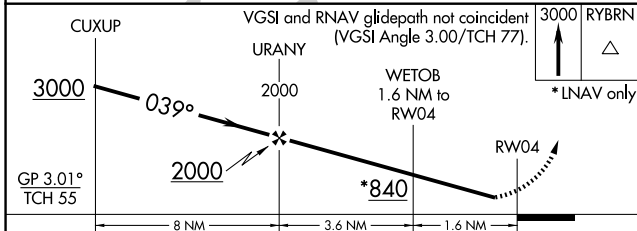
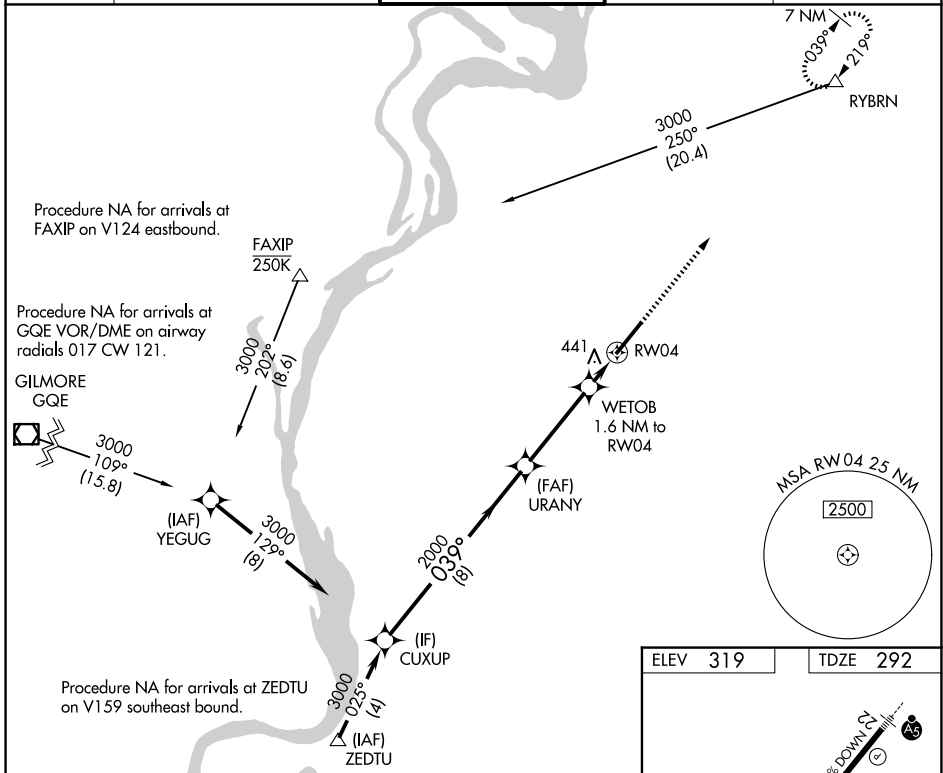
WAAS CH <b>78334</b> <b>W04A</b>	APP CRS <b>039°</b>	Rwy Ldg TDZE Apt Elev	<b>8001</b> <b>292</b> <b>319</b>
--	------------------------	-----------------------------	---

# RNAV (GPS) RWY 4

MILLINGTON/MEMPHIS (NQA)

RNP APCH.		MISSED APPROACH: Climb to 3000 direct RYBRN and hold.	
<p>▼ Rwy 4 helicopter visibility reduction below ¾ SM NA. For uncompensated Baro-VNAV systems, LNAV/VNAV NA below -15°C or above 54°C.</p>			

AWOS-3 <b>118.925</b>	MEMPHIS APP CON <b>119.1 291.6</b> <b>125.8 338.3</b> (176°-355°) (356°-175°)	MILLINGTON TOWER ★ <b>120.25</b> (CTAF) <b>0 340.2</b>	GND CON <b>121.375</b>	UNICOM <b>122.95</b>
--------------------------	---	---	---------------------------	-------------------------



ELEV 319	TDZE 292
REIL Rwy 22 REIL Rwy 4 <b>0</b> HIRL Rwy 4-22 <b>0</b>	

CATEGORY	A	B	C	D	E
LPV DA	492-¾ 200 (200-¾)				
LNAV/VNAV DA	746-1½ 454 (500-1½)				
LNAV MDA	700-1 408 (400-1) 700-1¼ 408 (400-1¼)				
CIRCLING	800-1 481 (500-1)	820-1 501 (600-1)	920-1¾ 601 (700-1¾)	960-2¼ 641 (700-2¼)	960-2½ 641 (700-2½)

SE-1, 14 MAY 2026 to 11 JUN 2026

SE-1, 14 MAY 2026 to 11 JUN 2026