

WAAS CH <b>99417</b> <b>W17A</b>	APP CRS <b>173°</b>	Rwy Idg TDZE <b>1553</b> Apt Elev <b>1563</b>	<b>5507</b> <b>1553</b> <b>1563</b>
--	------------------------	---	---

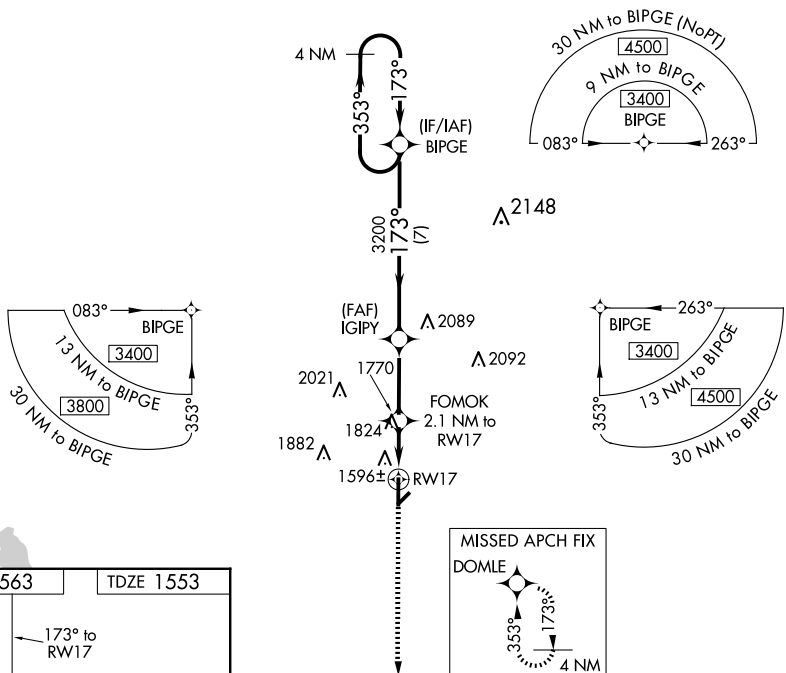
# RNAV (GPS) RWY 17

HOBART RGNL (HBR)

**⚠** For uncompensated Baro-VNAV systems, LNAV/VNAV NA below -18°C (0°F) or above 45°C (113°F). DME/DME RNP-0.3 NA. When local altimeter setting not received, use Altus/Quartz Mountain Rgnl altimeter setting and increase all DA 71 feet and all MDA 80 feet, increase LPV and LNAV/VNAV all Cats, LNAV Cats C and D and Circling Cat C visibility ¼ mile. Baro-VNAV NA when using Altus/Quartz Mountain altimeter setting. VDP NA with Altus/Quartz Mountain altimeter setting.

MISSED APPROACH: Climb to 4000 direct DOMLE and hold.

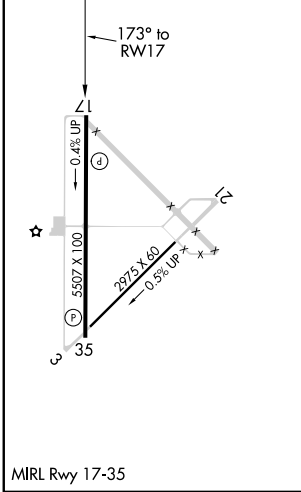
ASOS <b>133.325</b>	ALTUS APP CON * <b>125.1 353.7</b>	UNICOM <b>122.8</b> (CTAF)
------------------------	---------------------------------------	-------------------------------



SC-1, 14 MAY 2026 to 11 JUN 2026

SC-1, 14 MAY 2026 to 11 JUN 2026

ELEV <b>1563</b>	TDZE <b>1553</b>
------------------	------------------



4000	DOMLE	4 NM Holding Pattern	
*LNAV only.	FOMOK 2.1 NM to RW17	IGIPY 3200	BIPGE 3400
RW17	*1.6 NM to RW17	3200	3400
1.6	0.5	2.9 NM	7 NM
CATEGORY	A	B	C
LPV DA	1803-1 250 (300-1)		
LNAV/VNAV DA	1900-1¼ 347 (400-1¼)		
LNAV MDA	2080-1 527 (600-1)	2080-1½ 527 (600-1½)	2080-1¾ 527 (600-1¾)
CIRCLING	2080-1 517 (600-1)	2320-2¼ 757 (800-2¼)	2460-3 897 (900-3)