

| | | |
|--|------------------------|---|
| WAAS CH 53417 W35A | APP CRS 353° | Rwy Idg TDZE 1561 Apt Elev 1563 |
|--|------------------------|---|

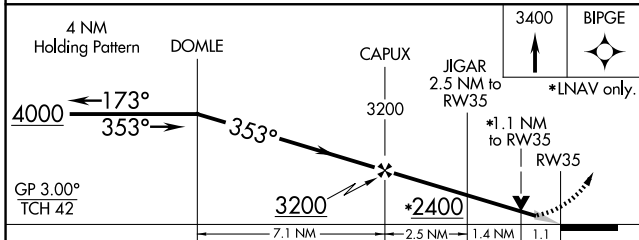
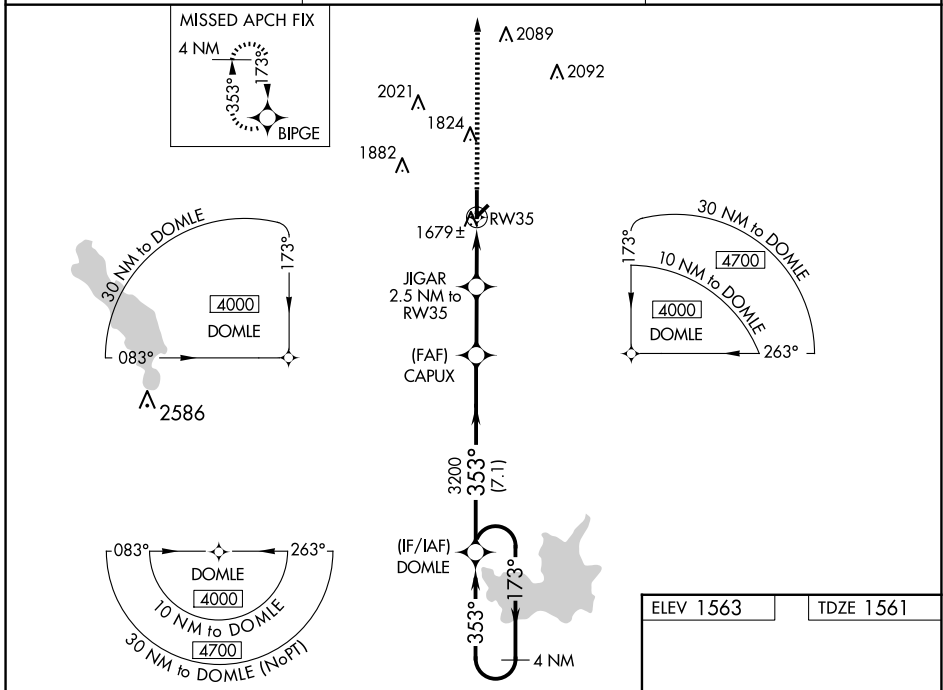
RNAV (GPS) RWY 35

HOBART RGNL (HBR)

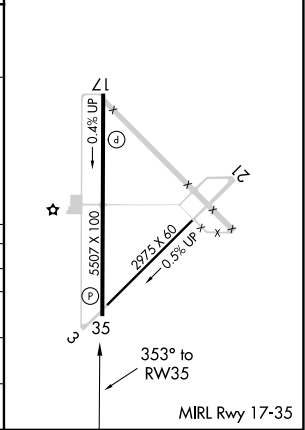
⚠ For uncompensated Baro-VNAV systems, LNAV/VNAV NA below -18°C (0°F) or above 45°C (113°F). DME/DME RNP-0.3 NA. When local altimeter setting not received, use Altus/Quartz Mountain Rgnl altimeter setting and increase LPV DA to 1882 feet and visibility all Cats ¼ SM; increase LNAV/VNAV DA to 2020 feet and visibility all Cats ¼ SM; increase all MDAs 80 feet and Circling Cat C visibility ¼ SM. Baro-VNAV NA when using Altus/Quartz Mountain Rgnl altimeter setting. VDP NA with Altus/Quartz Mountain Rgnl altimeter setting.

MISSED APPROACH: Climb to 3400 direct BIPGE and hold.

| | | |
|------------------------|--------------------------------------|-------------------------------|
| ASOS 133.325 | ALTUS APP CON★ 125.1 353.7 | UNICOM 122.8 (CTAF) |
|------------------------|--------------------------------------|-------------------------------|



| | |
|-----------|-----------|
| ELEV 1563 | TDZE 1561 |
|-----------|-----------|



| CATEGORY | A | B | C | D |
|--------------|----------------------|----------------------|----------------------|--------------------|
| LPV DA | 1811-1 250 (300-1) | | | |
| LNAV/VNAV DA | 1949-1¼ 388 (400-1¼) | | | |
| LNAV MDA | 1940-1 379 (400-1) | 1940-1½ 379 (400-1½) | 1940-2 379 (400-2) | |
| CIRCLING | 1980-1 417 (500-1) | 2020-1 457 (500-1) | 2320-2¼ 757 (800-2¼) | 2460-3 897 (900-3) |

SC-1, 14 MAY 2026 to 11 JUN 2026

SC-1, 14 MAY 2026 to 11 JUN 2026