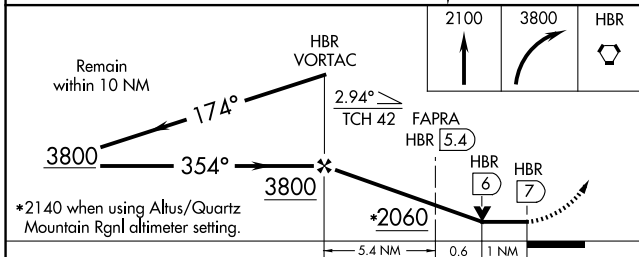
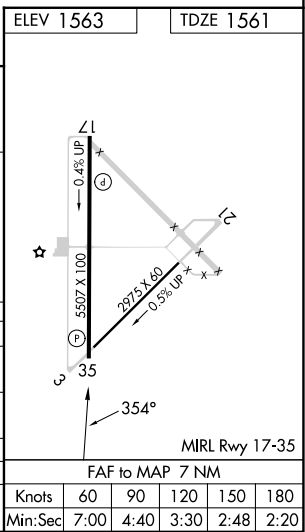
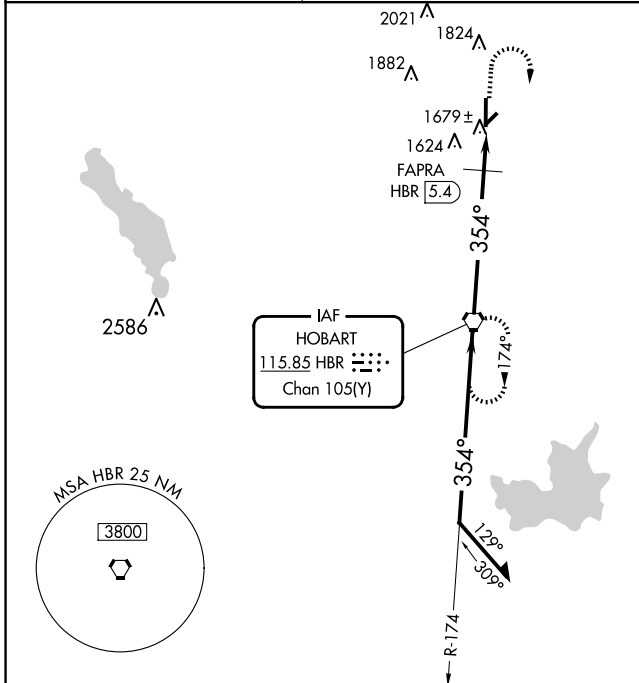


VORTAC HBR 115.85 Chan 105(Y)	APP CRS 354°	Rwy Idg TDZE 1561 Apt Elev 1563
---	------------------------	---

VOR RWY 35

HOBART RGNL (HBR)

<p>⚠ When local altimeter setting not received, use Altus/Quartz Mountain Rgnl altimeter setting and increase all MDAs 80 feet, increase S-35 Cats C/D and Circling Cat C visibility ¼ SM, increase FAPRA fix minimums S-35 Cats C/D and Circling Cat C visibility ¼ SM. VDP NA when using Altus/Quartz Mountain Rgnl altimeter setting.</p>	<p>MISSED APPROACH: Climb to 2100, then climbing right turn to 3800 direct HBR VORTAC and hold.</p>	
<p>ASOS 133.325</p>	<p>ALTUS APP CON ★ 125.1 353.7</p>	<p>UNICOM 122.8 (CTAF)</p>



CATEGORY	A	B	C	D
S-35	2060-1	499 (500-1)	2060-1¼ 499 (500-1¼)	2060-1½ 499 (500-1½)
CIRCLING	2060-1	497 (500-1)	2320-2¼ 757 (800-2¼)	2460-3 897 (900-3)
FAPRA FIX MINIMUMS				
S-35	1980-1	419 (500-1)	1980-1¼	419 (500-1¼)
CIRCLING	1980-1 417 (500-1)	2020-1 457 (500-1)	2320-2¼ 757 (800-2¼)	2460-3 897 (900-3)

MIRA Rwy 17-35	Knots	60	90	120	150	180
	Min:Sec	7:00	4:40	3:30	2:48	2:20

SC-1, 14 MAY 2026 to 11 JUN 2026

SC-1, 14 MAY 2026 to 11 JUN 2026