

WAAS CH <b>69243</b>	APP CRS <b>028°</b>	Rwy Idg TDZE <b>684</b>	<b>5000</b>
<b>W03A</b>		Apt Elev <b>694</b>	

# RNAV (GPS) RWY 3

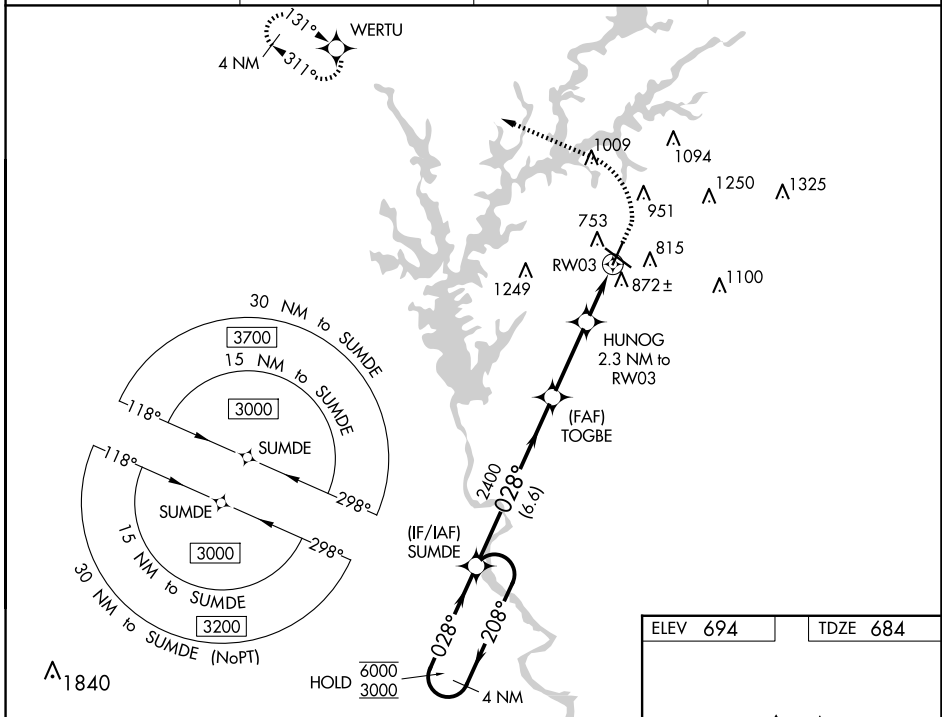
LAGRANGE/CALLAWAY (LGC)

RNP APCH.

- ⚠ Circling Rwy 13, 21 NA at night.
- ⚠ Rwy 3 helicopter visibility reduction below 3/4 SM NA.
- For uncompensated Baro-VNAV systems, LNAV/VNAV NA below -16°C or above 54°C.

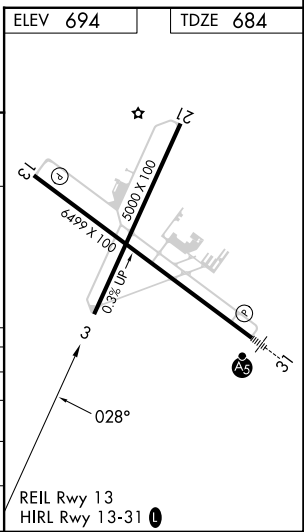
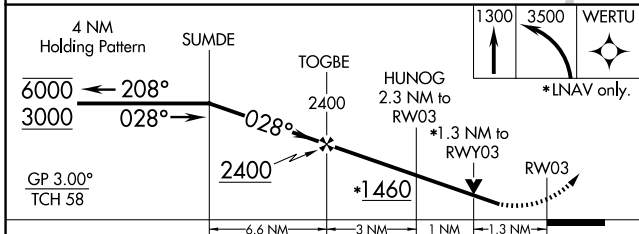
MISSED APPROACH: Climb to 1300 then climbing left turn to 3500 direct WERTU and hold, continue climb-in-hold to 3500.

AWOS-3 <b>126.325</b>	ATLANTA APP CON* <b>125.5 323.1</b>	CLINC DEL <b>119.25</b>	UNICOM <b>122.975</b> (CTAF) <b>📻</b>
--------------------------	--	----------------------------	--



SE-4, 14 MAY 2026 to 11 JUN 2026

SE-4, 14 MAY 2026 to 11 JUN 2026



CATEGORY	A	B	C	D
LPV DA		1064-1	380 (400-1)	
LNAV/VNAV DA		1044-1	360 (400-1)	
LNAV MDA	1140-1	456 (500-1)	1140-1 3/8	456 (500-1 3/8)
<b>C</b> CIRCLING	1280-1	586 (600-1)	1540-2 1/2 846 (900-2 1/2)	1600-3 906 (1000-3)