

COPTER TACAN X RWY 32

TACAN NID Chan 53	APCH CRS 313°	Rwy ldg THRE 2241 Arprt Elev 2288
--------------------------	----------------------	--

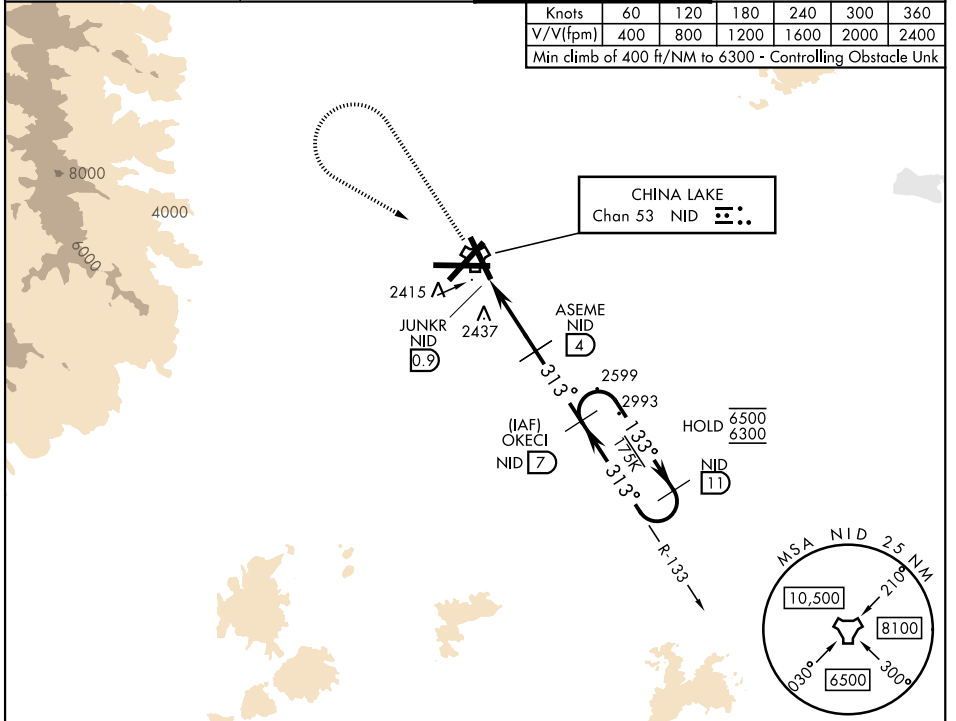
[USN] CHINA LAKE NAWA (ARMITAGE FLD) (KNID)

RADAR required
 ▼ Limit final approach airspeed to 80 KIAS.

MISSED APPROACH: Climb to 6300, then climbing left turn to 6300, intercept NID TACAN R-133 to OKECI and hold.

ATIS ★ 322.375	JOSHUA APP CON/DEP CON 133.65 348.7	TOWER ★ 120.15 340.2	GND CON 350.3
-----------------------	--	-----------------------------	----------------------

Knots	60	120	180	240	300	360
V/V(fpm)	400	800	1200	1600	2000	2400
Min climb of 400 ft/NM to 6300 - Controlling Obstacle Unk						

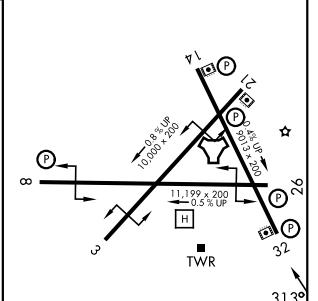
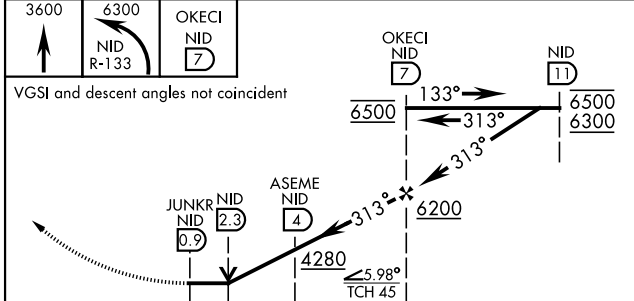


SW-3, 14 MAY 2026 to 11 JUN 2026

SW-3, 14 MAY 2026 to 11 JUN 2026

EMERG SAFE ALT 100 NM 16,700

ELEV	2288	THRE	2241
------	------	------	------



CATEGORY	COPTER		
S-32	2740-1	499	(500-1)
CIRCLING	2780-1	496	(500-1)
HIRL all rwys			

COPTER TACAN X RWY 32