

# HI-TACAN Z RWY 03

TACAN NID Chan 53	APCH CRS 034°	Rwy ldg 10,000
		TDZE 2284
		Arprt Elev 2288

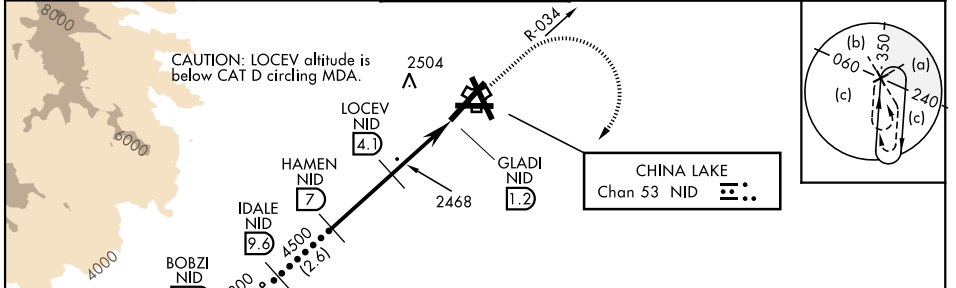
[USN]

CHINA LAKE NAWS (ARMITAGE FLD) (KNID)

RADAR required

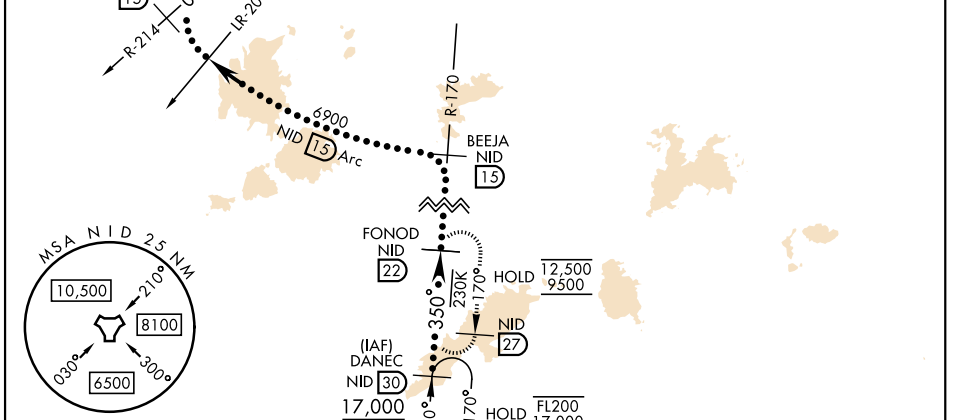
MISSED APPROACH: Climb to 3600 then climbing right turn to 9500, intercept NID TACAN R-170 to FONOD and hold. Continue climb-in-hold to 9500.

ATIS ★ 322.375	JOSHUA APP/DEP CON 133.65 348.7	TOWER ★ 120.15 340.2	GND CON 350.3	CLNC DEL 254.25
-------------------	------------------------------------	-------------------------	------------------	--------------------



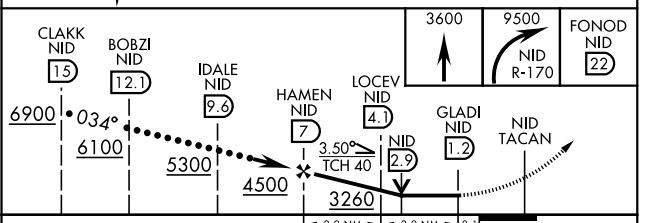
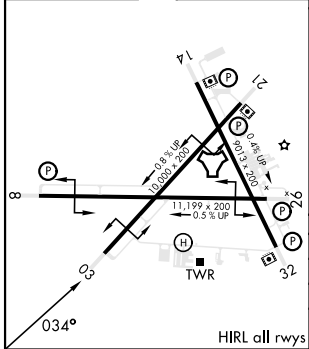
%	Knots	60	120	180	240	300	360
4.1	V/V(fpm)	249	498	747	996	1245	1494

Min climb of 4.1% (249 ft/NM) to 4100 - Controlling Obstacle Unk



EMERG SAFE ALT 100 NM 16,700

ELEV 2288	TDZE 2284
-----------	-----------



CATEGORY	C	D	E
S-03 (4.1%)	2780-1 $\frac{3}{8}$	496	(500-1 $\frac{3}{8}$ )
S-03	3080-2 $\frac{1}{2}$	796	(800-2 $\frac{1}{2}$ )
<b>C</b> CIRCLING	3080-2 $\frac{1}{2}$ 796 (800-2 $\frac{1}{2}$ )	3700-3 1416 (1500-3)	NOT AUTHORIZED

# HI-TACAN Z RWY 03

SW-3, 14 MAY 2026 to 11 JUN 2026

SW-3, 14 MAY 2026 to 11 JUN 2026