

RIDGECREST, CALIFORNIA

# RNAV (GPS) RWY 03

APCH CRS	Rwy Idg	<b>10,000</b>
<b>028°</b>	TDZE	<b>2284</b>
	Arprt Elev	<b>2288</b>

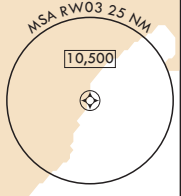
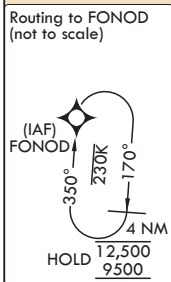
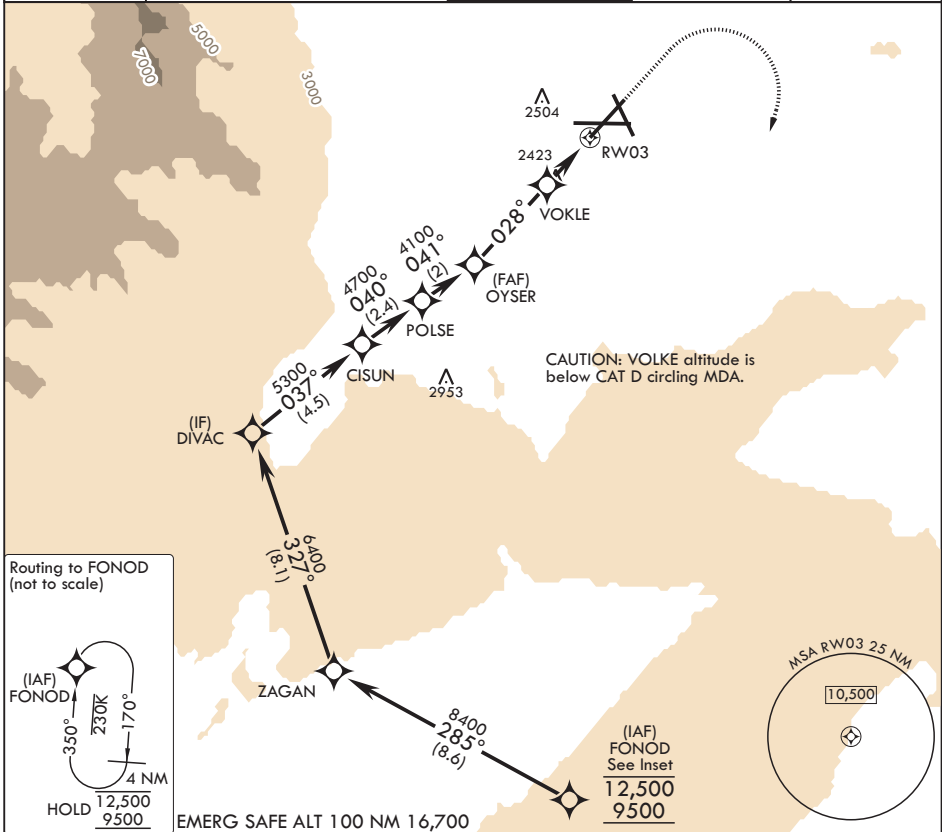
- (USN)

CHINA LAKE NAWS (ARMITAGE FLD) (KNID)

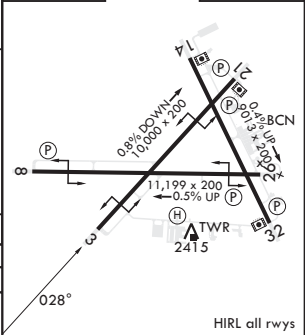
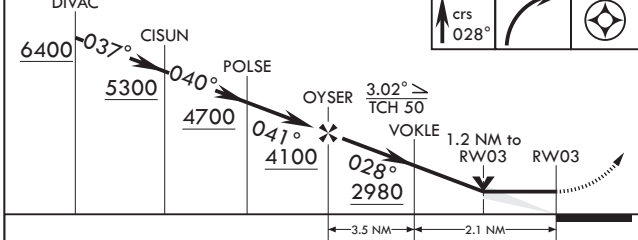
RNP APCH-GPS

MISSED APPROACH: (Do not exceed 185 KIAS until initial turn completion.) Climb to 3600 then climbing right turn to 9500 direct FONOD and hold, continue climb-in-hold to 9500.

ATIS★	JOSHUA APP CON/DEP CON	TOWER★	GND CON	CLNC DEL
<b>322.375</b>	<b>133.65 348.7</b>	<b>120.15 340.2</b>	<b>350.3</b>	<b>254.25</b>



DIVAC	3600	9500	FONOD	ELEV 2288	TDZE 2284
-------	------	------	-------	-----------	-----------



CATEGORY	A	B	C	D
LNAV MDA	2720-1	436 (500-1)	2720-1¼	436 (500-1¼)
CIRCLING	2780-1 496 (500-1)	2820-1 536 (600-1)	2820-1½ 536 (600-1½)	3700-3 1416 (1500-3)

RIDGECREST, CALIFORNIA

35°41'N - 117°42'W

CHINA LAKE NAWS (ARMITAGE FLD) (KNID)

Amdt 1 12JUN25

# RNAV (GPS) RWY 03

SW-3, 14 MAY 2026 to 11 JUN 2026

SW-3, 14 MAY 2026 to 11 JUN 2026