

RIDGECREST, CALIFORNIA

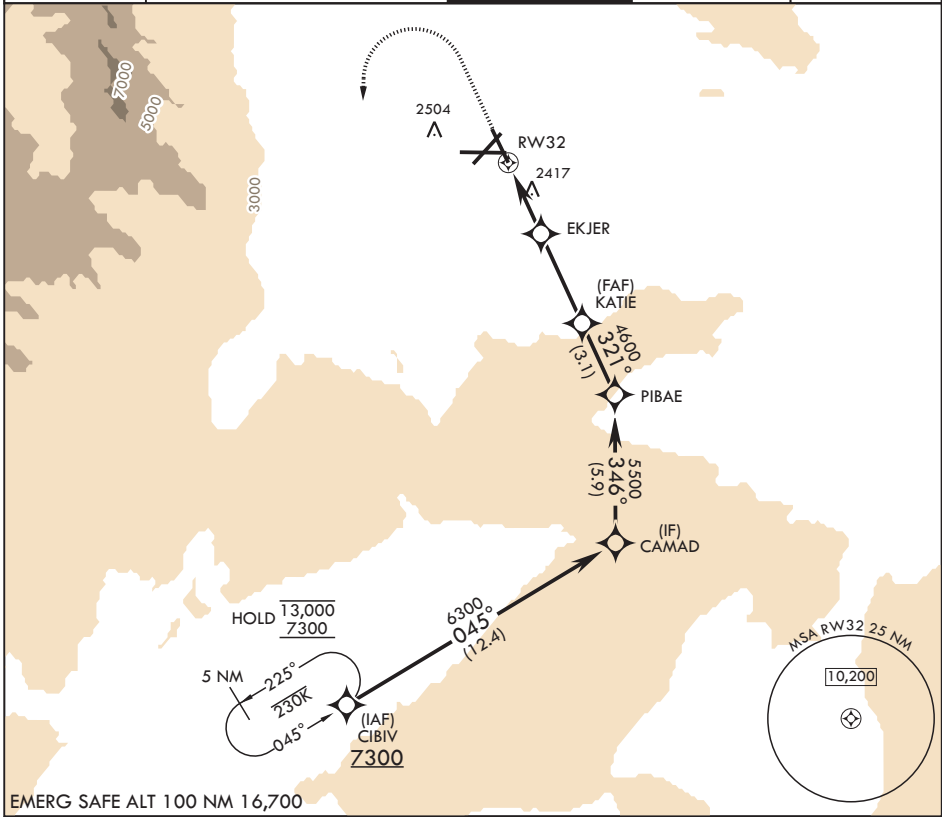
RNAV (GPS) RWY 32

APCH CRS 321°	Rwy Idg TDZE Arprt Elev	9013 2241 2288
------------------	-------------------------------	----------------------

- (USN) CHINA LAKE NAWS (ARMITAGE FLD) (KNID)

RNP APCH-GPS	MISSED APPROACH: (Do not exceed 225 KIAS until initial turn completion) Climb to 3800 then climbing left turn to 7300 direct CIBIV and hold.
RADAR required	

ATIS* 322.375	JOSHUA APP CON/DEP CON 133.65 348.7	TOWER* 120.15 340.2	GND CON 350.3	CLNC DEL 254.25
------------------	--	------------------------	------------------	--------------------



EMERG SAFE ALT 100 NM 16,700

	<p>VGSI and Descent Angle not coincident (VGSI 3.00/TCH 50).</p>	<p>ELEV 2288</p>	<p>TDZE 2241</p>															
<table border="1"> <thead> <tr> <th>CATEGORY</th> <th>A</th> <th>B</th> <th>C</th> <th>D</th> </tr> </thead> <tbody> <tr> <td>LNAV MDA</td> <td>2700-1</td> <td>459 (500-1)</td> <td>2700-1½</td> <td>459 (500-1½)</td> </tr> <tr> <td> CIRCILING </td> <td>2780-1 496 (500-1)</td> <td>2820-1 536 (600-1)</td> <td>2820-1½ 536 (600-1½)</td> <td>3700-3 1416 (1500-3)</td> </tr> </tbody> </table>	CATEGORY	A	B	C	D	LNAV MDA	2700-1	459 (500-1)	2700-1½	459 (500-1½)	CIRCILING	2780-1 496 (500-1)	2820-1 536 (600-1)	2820-1½ 536 (600-1½)	3700-3 1416 (1500-3)	<p>HIRL all rwys</p>		
CATEGORY	A	B	C	D														
LNAV MDA	2700-1	459 (500-1)	2700-1½	459 (500-1½)														
CIRCILING	2780-1 496 (500-1)	2820-1 536 (600-1)	2820-1½ 536 (600-1½)	3700-3 1416 (1500-3)														

RIDGECREST, CALIFORNIA

35°41'N - 117°42'W

CHINA LAKE NAWS (ARMITAGE FLD) (KNID)

Amdt 6 12JUN25

RNAV (GPS) RWY 32

SW-3, 14 MAY 2026 to 11 JUN 2026

SW-3, 14 MAY 2026 to 11 JUN 2026