

# HI-TACAN Y RWY 23

TACAN NBC Chan <b>42</b>	APCH CRS <b>221°</b>	Rwy ldg TDZE Arprt Elev <b>12,202</b> <b>16</b> <b>37</b>
-----------------------------	-------------------------	--

[USN]

BEAUFORT MCAS (MERRITT FLD) (KNBC)

ALS-1  
 \* When ALS inop, increase vis to 1 mile.

MISSED APPROACH: Climb to 500, then climbing right turn to 3000, intercept NBC TACAN R-307 direct BRAYS and hold.

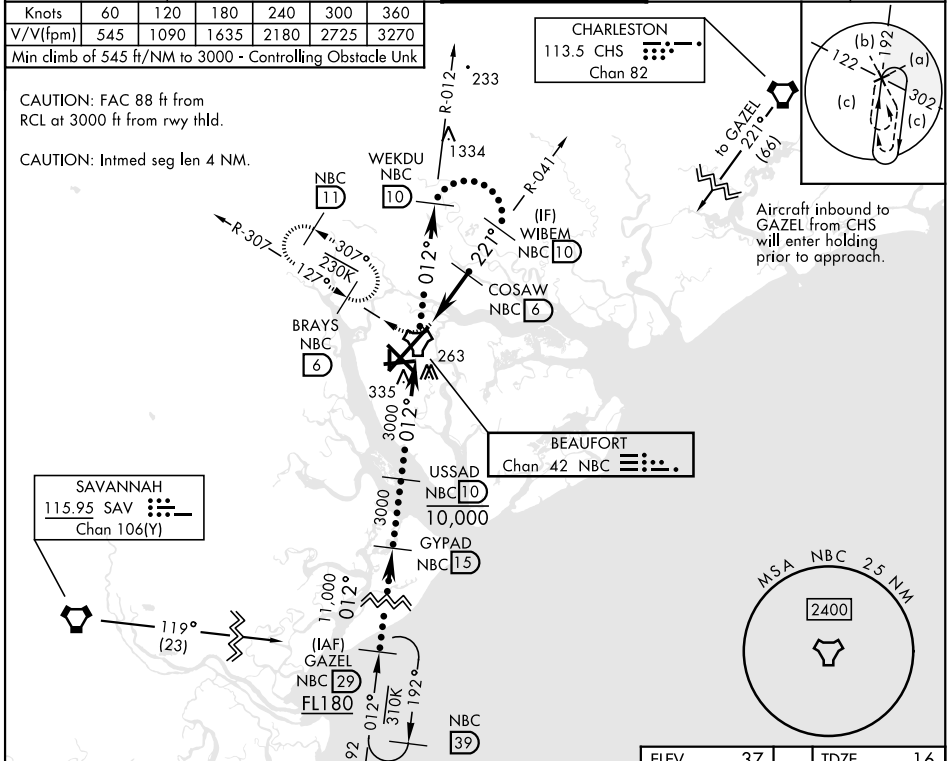
ATIS ★ <b>279.525</b>	APP CON <b>125.125 292.125</b> (ABV 3000) <b>123.7 269.125</b> (3000 and BLW)	TOWER ★ <b>119.05 342.875</b>	GND CON <b>128.15 348.625</b>	ASR/PAR
--------------------------	---	----------------------------------	----------------------------------	---------

Knots	60	120	180	240	300	360
V/V(fpm)	545	1090	1635	2180	2725	3270

Min climb of 545 ft/NM to 3000 - Controlling Obstacle Unk

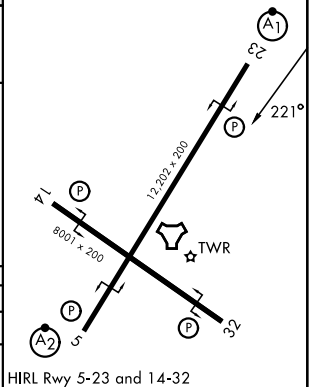
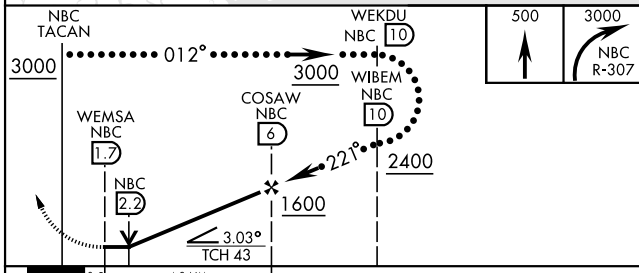
CAUTION: FAC 88 ft from RCL at 3000 ft from rwy thld.

CAUTION: Intmed seg len 4 NM.



EMERG SAFE ALT 100 NM 3100

ELEV	37	TDZE	16
------	----	------	----



CATEGORY	C	D	E
S-23 *	380- $\frac{3}{4}$	364	(400- $\frac{3}{4}$ )
CIRCLING	580-1 $\frac{1}{2}$ 543 (600-1 $\frac{1}{2}$ )	600-2 563 (600-2)	740-2 $\frac{1}{2}$ 703 (800-2 $\frac{1}{2}$ )

# HI-TACAN Y RWY 23

SE-2, 14 MAY 2026 to 11 JUN 2026

SE-2, 14 MAY 2026 to 11 JUN 2026