

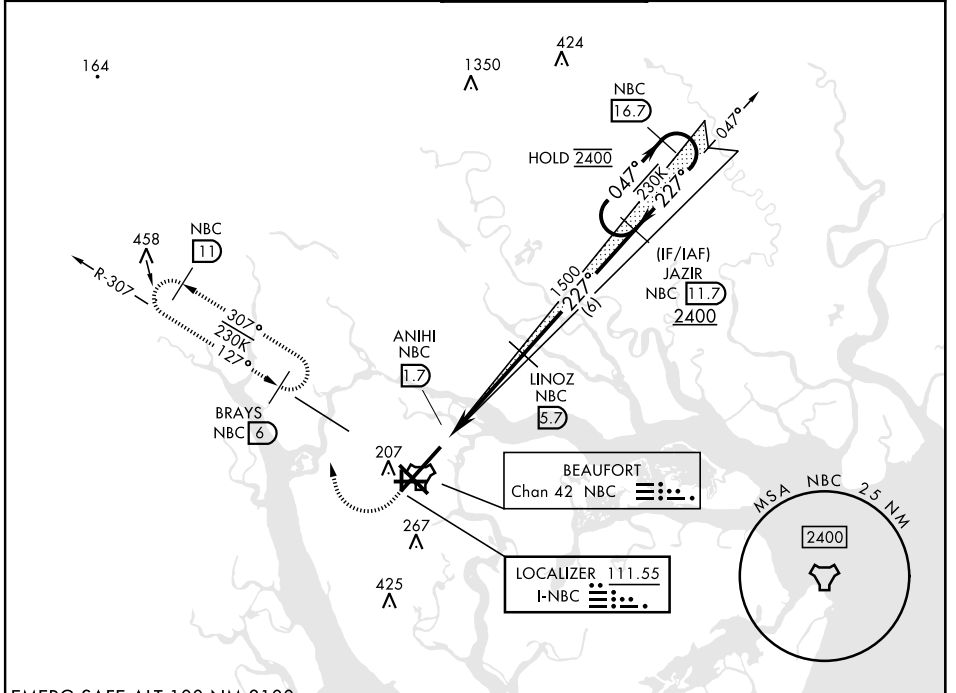
ILS or LOC Y RWY 23

| | | |
|----------------------------|-------------------------|---|
| LOC I-NBC 111.55 | APCH CRS 227° | Rwy ldg 12,202 TDZE 16 Arprt Elev 37 |
|----------------------------|-------------------------|---|

[USN]

BEAUFORT MCAS (MERRITT FLD) (KNBC)

| | | | | |
|---|---|----------------------------------|--|---------|
| RNAV or RADAR required for missed approach. | | ALSIF-1 | MISSED APPROACH: Climb to 500, then climbing right turn to 3000, join NBC TACAN R-307 direct BRAYS and hold. Continue climb in hold to 3000. | |
| *When ALS inop, increase vis to 3/4 mile. **When ALS inop, increase CAT AB vis to 1 mile; CAT CDE vis to 1 1/2 miles. | | | | |
| ATIS ★ 279.525 | APP CON 125.125 292.125 (ABV 3000) 123.7 269.125 (3000 and BLV) | TOWER ★ 119.05 342.875 | GND CON 128.15 348.625 | ASR/PAR |



SE-2, 14 MAY 2026 to 11 JUN 2026

SE-2, 14 MAY 2026 to 11 JUN 2026

| | | | | | | |
|----------------------------|---------|---------------|------------------------------|----------------------|------------------------------|---------|
| EMERG SAFE ALT 100 NM 3100 | | | | | ELEV 37 | TDZE 16 |
| 500 | 3000 | BRAYS NBC 6 | JAZIR NBC 11.7 | NBC 16.7 | | |
| | | | | | | |
| | | | | | | |
| CATEGORY | A | B | C | D | E | |
| S-ILS 23* | 216-1/2 | | 200 | (200-1/2) | | |
| S-LOC 23** | 460-1/2 | 444 (500-1/2) | 460-7/8 | 444 | (500-7/8) | |
| CIRCLING | 560-1 | 523 (600-1) | 580-1 1/2 543 (600-1 1/2) | 600-2 563 (600-2) | 740-2 1/2 703 (800-2 1/2) | |

ILS or LOC Y RWY 23