

ILS or LOC Z RWY 23

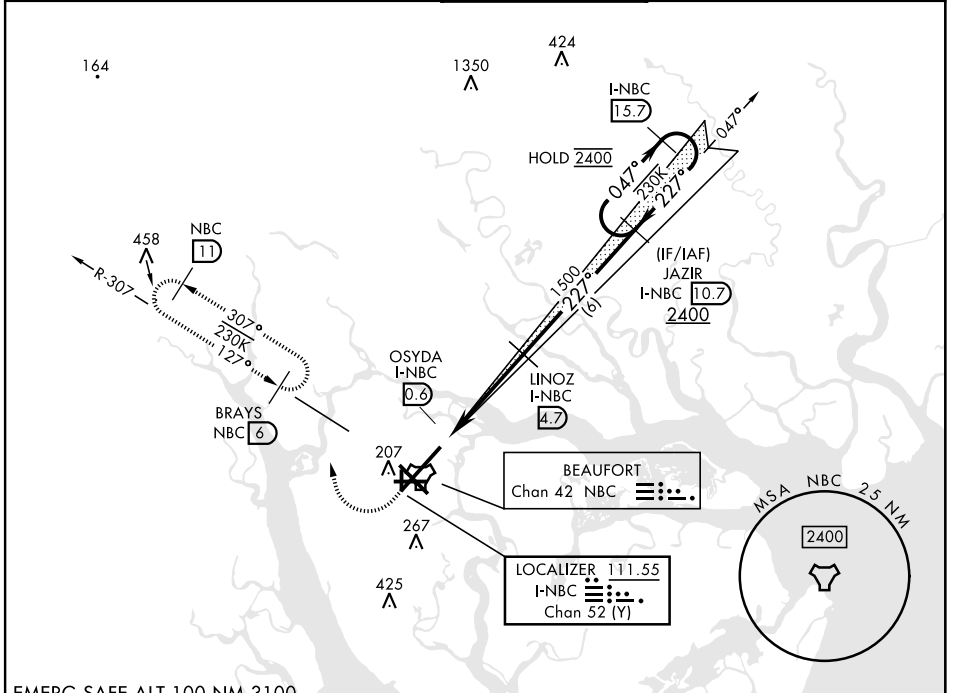
LOC/DME I-NBC 111.55 Chan 52 (Y)	APCH CRS 227°	Rwy Idg 12,202 TDZE 16 Arprt Elev 37
--	-------------------------	---

[USN]

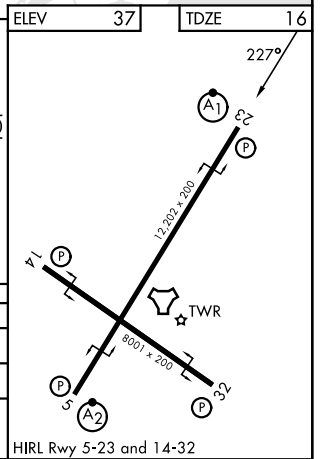
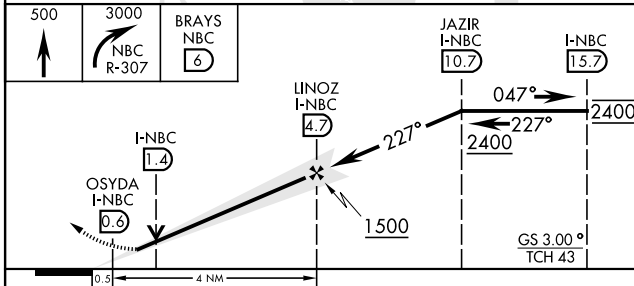
BEAUFORT MCAS (MERRITT FLD) (KNBC)

RNAV or RADAR required for missed approach.	ALSF-1 	MISSED APPROACH: Climb to 500, then climbing right turn to 3000, join NBC TACAN R-307 direct BRAYS and hold. Continue climb in hold to 3000.
<p>▼ *When ALS inop, increase vis to ¾ mile.</p> <p>**When ALS inop, increase CAT AB vis to 1 mile; CAT CDE vis to 1½ miles.</p>		

ATIS ★ 279.525	APP CON 125.125 292.125 (ABV 3000) 123.7 269.125 (3000 and BLV)	TOWER ★ 119.05 342.875	GND CON 128.15 348.625	ASR/PAR
--------------------------	---	----------------------------------	----------------------------------	---------



EMERG SAFE ALT 100 NM 3100



CATEGORY	A	B	C	D	E
S-ILS 23*	216-½		200	(200-½)	
S-LOC 23**	460-½	444 (500-½)	460-¾	444	(500-¾)
CIRCLING	560-1	523 (600-1)	580-1½ 543 (600-1½)	600-2 563 (600-2)	740-2½ 703 (800-2½)

ILS or LOC Z RWY 23

SE-2, 14 MAY 2026 to 11 JUN 2026

SE-2, 14 MAY 2026 to 11 JUN 2026