

BEAUFORT, SOUTH CAROLINA

RNAV (GPS) RWY 23

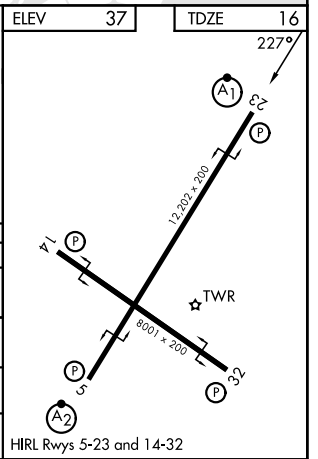
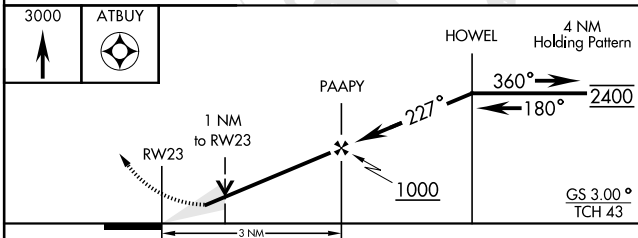
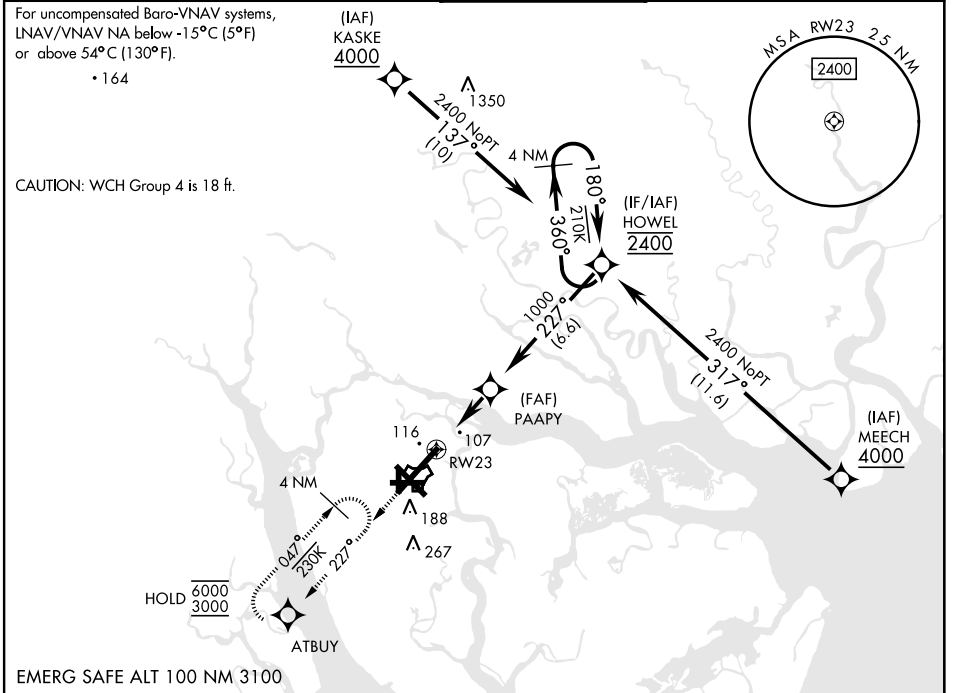
WAAS Chan 93379 W23A	APCH CRS 227°	Rwy Idg 12,202 TDZE 16 Arprt Elev 37
--	-------------------------	---

[USN]

BEAUFORT MCAS (MERRITT FLD) (KNBC)

RNP APCH	ALSIF-1 	MISSED APPROACH: Climb to 3000 direct ATBUY and hold. Continue climb in hold to 3000.
RADAR required.		
**When ALS inop, increase vis to 3/4 mile. **When ALS inop, increase vis to 1 mile.		

ATIS ★ 279.525	APP CON 125.125 292.125 (ABV 3000) 123.7 269.125 (3000 and BLV)	TOWER ★ 119.05 342.875	GND CON 128.15 348.625	ASR/PAR
--------------------------	---	----------------------------------	----------------------------------	---------



CATEGORY	A		B		C		D	
LPV DA *	216-1/2		200		(200-1/2)			
LNAV/VNAV DA **	380-5/8		364		(400-3/8)			
LNAV MDA **	380-1/2	364	(400-1/2)	380-3/4	364	(400-3/4)		
CIRCLING	560-1	523	(600-1)	580-1 1/2	543	(600-1 1/2)	600-2	563 (600-2)

BEAUFORT, SOUTH CAROLINA
Amdt 5 11JUL24

32° 29' N-80° 43' W

BEAUFORT MCAS (MERRITT FLD) (KNBC)

RNAV (GPS) RWY 23

SE-2, 14 MAY 2026 to 11 JUN 2026

SE-2, 14 MAY 2026 to 11 JUN 2026