

# RNAV (GPS) RWY 32

WAAS Chan <b>95233</b> <b>W32A</b>	APCH CRS <b>320°</b>	Rwy Idg TDZE Arprt Elev <b>8000</b> <b>25</b> <b>37</b>
--	-------------------------	--

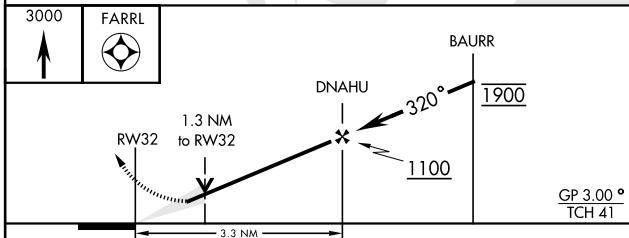
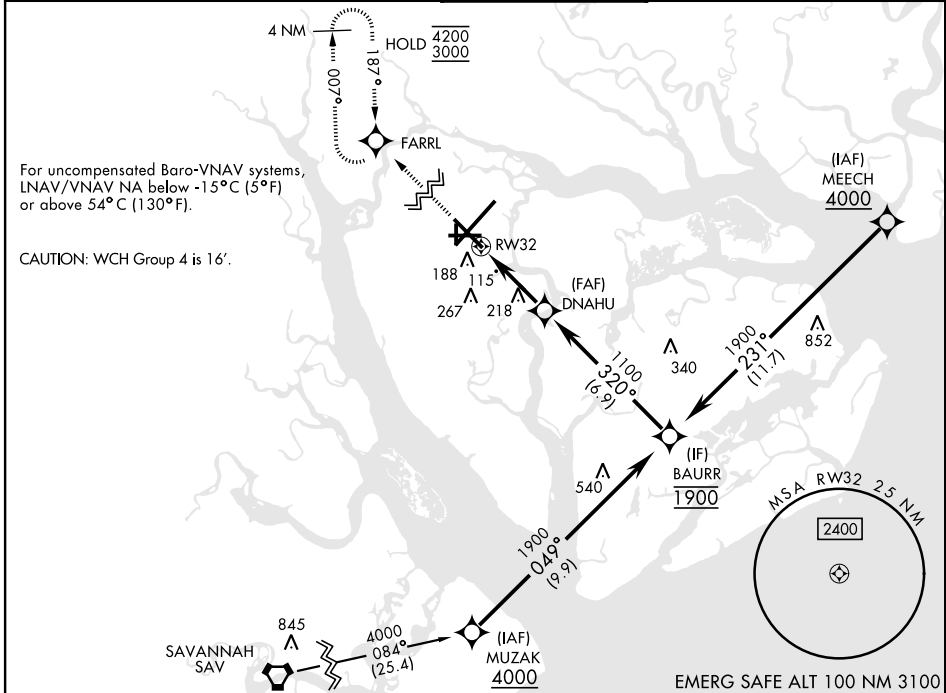
[USN]

BEAUFORT MCAS (MERRITT FLD) (KNBC)

RNP APCH

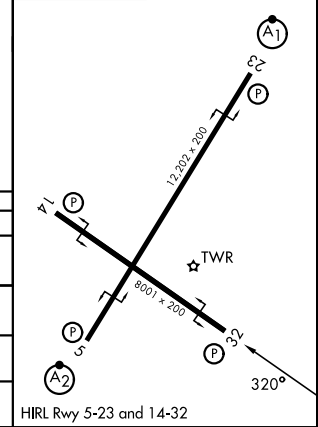
MISSED APPROACH: Climb to 3000 direct FARRL and hold, continue climb in hold to 3000.

ATIS ★ <b>279.525</b>	APP CON <b>125.125 292.125</b> (ABV 3000) <b>123.7 269.125</b> (3000 and BLV)	TOWER ★ <b>119.05 342.875</b>	GND CON <b>128.15 348.625</b>	ASR/PAR
--------------------------	---	----------------------------------	----------------------------------	---------



ELEV 37	TDZE 25
---------	---------

CATEGORY	A	B	C	D
LPV DA	312-7/8	287	(300-7/8)	
LNAV/VNAV DA	389-1	364	(400-1)	
LNAV MDA	480-1 455 (500-1)	480-1 455 (500-1 1/2)	543 (600-1 1/2)	600-2 563 (600-2)
CIRCLING	560-1 523 (600-1)			



# RNAV (GPS) RWY 32

SE-2, 14 MAY 2026 to 11 JUN 2026

SE-2, 14 MAY 2026 to 11 JUN 2026