

BEAUFORT, SOUTH CAROLINA

# RNAV (GPS) RWY 5


WAAS Chan <b>90095</b> <b>W05A</b>	APCH CRS <b>047°</b>	Rwy Idg <b>12,202</b> TDZE <b>37</b> Arpt Elev <b>37</b>
--	-------------------------	--

[USN]

BEAUFORT MCAS (MERRITT FLD) (KNBC)

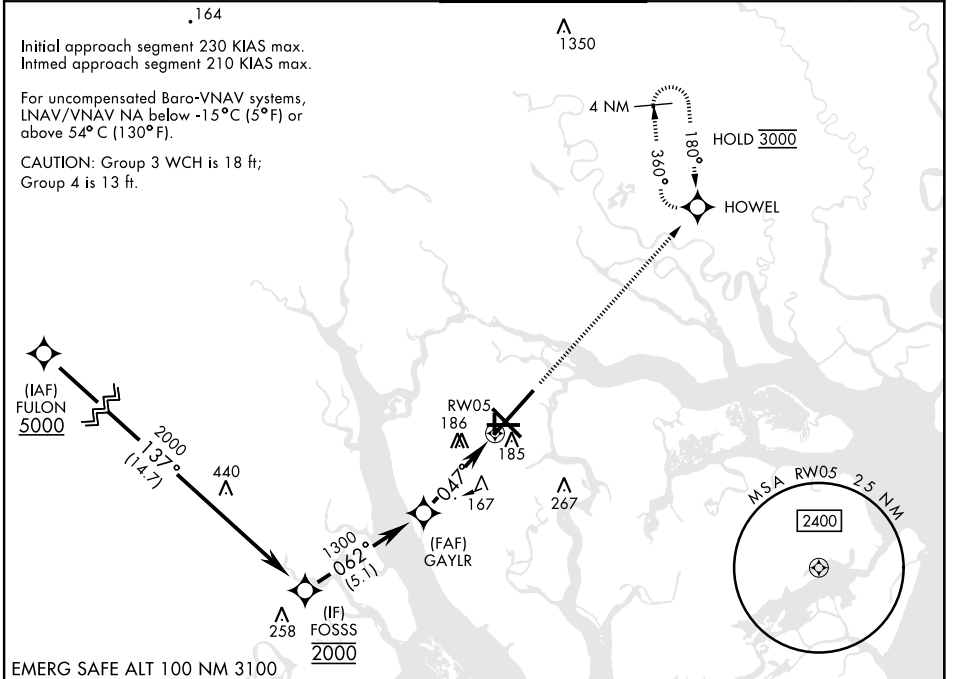
RNP APCH
RADAR required
<p>▼ * When ALS inop, increase vis to 1 mile. ** When ALS inop, increase CAT AB vis to 1 mile, CAT CD to 1½ miles.</p>

SALSF

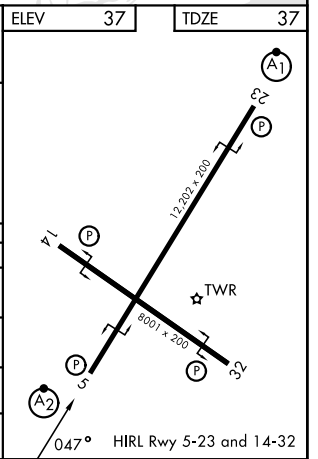


MISSED APPROACH: Climb to 3000 direct HOWEL and hold, continue climb-in-hold to 3000.

ATIS ★ <b>279.525</b>	APP CON <b>125.125 292.125</b> (ABV 3000) <b>123.7 269.125</b> (3000 and BLV)	TOWER ★ <b>119.05 342.875</b>	GND CON <b>128.15 348.625</b>	ASR/PAR
--------------------------	---	----------------------------------	----------------------------------	---------



	ELEV 37		TDZE 37																									
	<table border="1"> <thead> <tr> <th>CATEGORY</th> <th>A</th> <th>B</th> <th>C</th> <th>D</th> </tr> </thead> <tbody> <tr> <td>LPV DA</td> <td colspan="2">237-¾</td> <td>200</td> <td>(200-¾)</td> </tr> <tr> <td>LNAV/ * VNAV DA</td> <td colspan="2">409-¾</td> <td>372</td> <td>(400-¾)</td> </tr> <tr> <td>LNAV MDA</td> <td>420-¾</td> <td>383 (400-¾)</td> <td>420-7/8</td> <td>383 (400-7/8)</td> </tr> <tr> <td>CIRCLING</td> <td>560-1</td> <td>523 (600-1)</td> <td>580-1½ 543 (600-1½)</td> <td>600-2 563 (600-2)</td> </tr> </tbody> </table>				CATEGORY	A	B	C	D	LPV DA	237-¾		200	(200-¾)	LNAV/ * VNAV DA	409-¾		372	(400-¾)	LNAV MDA	420-¾	383 (400-¾)	420-7/8	383 (400-7/8)	CIRCLING	560-1	523 (600-1)	580-1½ 543 (600-1½)
CATEGORY	A	B	C	D																								
LPV DA	237-¾		200	(200-¾)																								
LNAV/ * VNAV DA	409-¾		372	(400-¾)																								
LNAV MDA	420-¾	383 (400-¾)	420-7/8	383 (400-7/8)																								
CIRCLING	560-1	523 (600-1)	580-1½ 543 (600-1½)	600-2 563 (600-2)																								



BEAUFORT, SOUTH CAROLINA

32°29'N-80°43'W

BEAUFORT MCAS (MERRITT FLD) (KNBC)

Amdt 6 11JUL24

# RNAV (GPS) RWY 5

SE-2, 14 MAY 2026 to 11 JUN 2026

SE-2, 14 MAY 2026 to 11 JUN 2026