

# TACAN RWY 23

TACAN NBC Chan <b>42</b>	APCH CRS <b>221°</b>	Rwy ldg <b>12,202</b> TDZE <b>16</b> Arprt Elev <b>37</b>
-----------------------------	-------------------------	---

[USN]

BEAUFORT MCAS (MERRITT FLD) (KNBC)

RADAR required

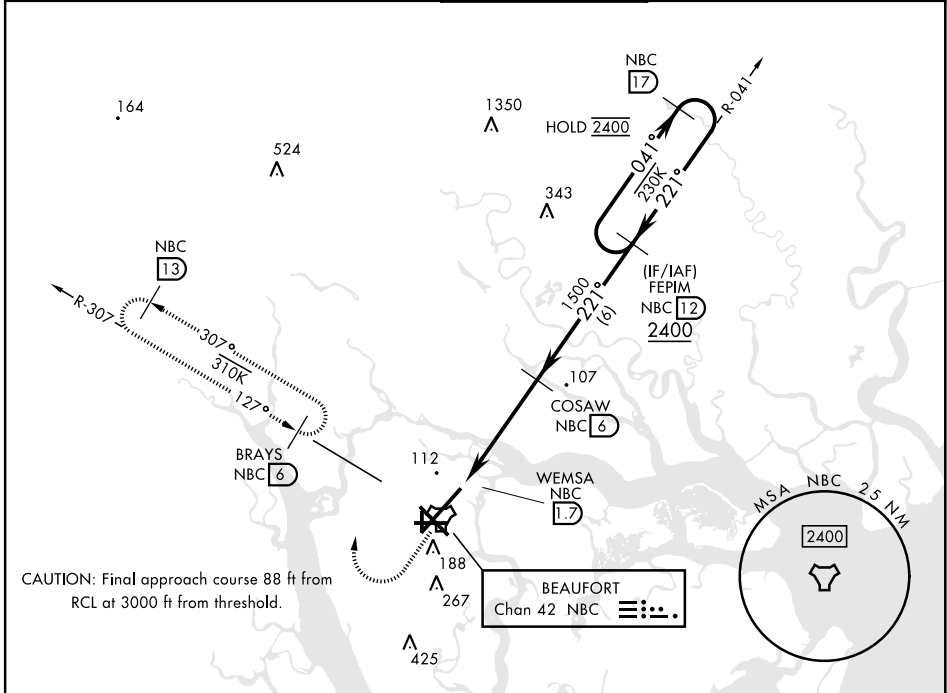
▼ \*When ALS inop, increase vis to 1 mile.

ALSF-1



MISSED APPROACH: Climb to 500, then climbing right turn to 3000, join NBC TACAN R-307 direct BRAYS and hold. Continue climb in hold to 3000.

ATIS ★ <b>279.525</b>	APP CON <b>125.125 292.125</b> (ABV 3000) <b>123.7 269.125</b> (3000 and BLW)	TOWER ★ <b>119.05 342.875</b>	GND CON <b>128.15 348.625</b>	ASR/PAR
--------------------------	---	----------------------------------	----------------------------------	---------

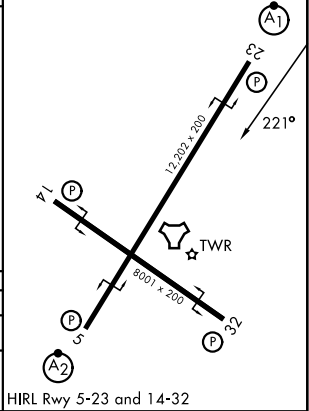
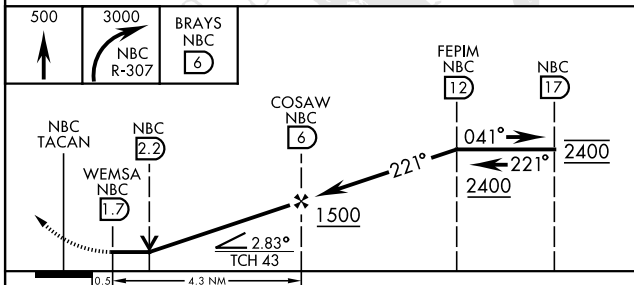


SE-2, 14 MAY 2026 to 11 JUN 2026

SE-2, 14 MAY 2026 to 11 JUN 2026

EMERG SAFE ALT 100 NM 3100

ELEV	37	TDZE	16
------	----	------	----



CATEGORY	A	B	C	D	E
S-23 *	380-1/2 364 (400-1/2)		380-3/4 364 (400-3/4)		
CIRCLING	560-1 523 (600-1)		580-1 1/2 543 (600-1 1/2)	600-2 563 (600-2)	740-2 1/2 703 (800-2 1/2)

# TACAN RWY 23