

# TACAN RWY 32

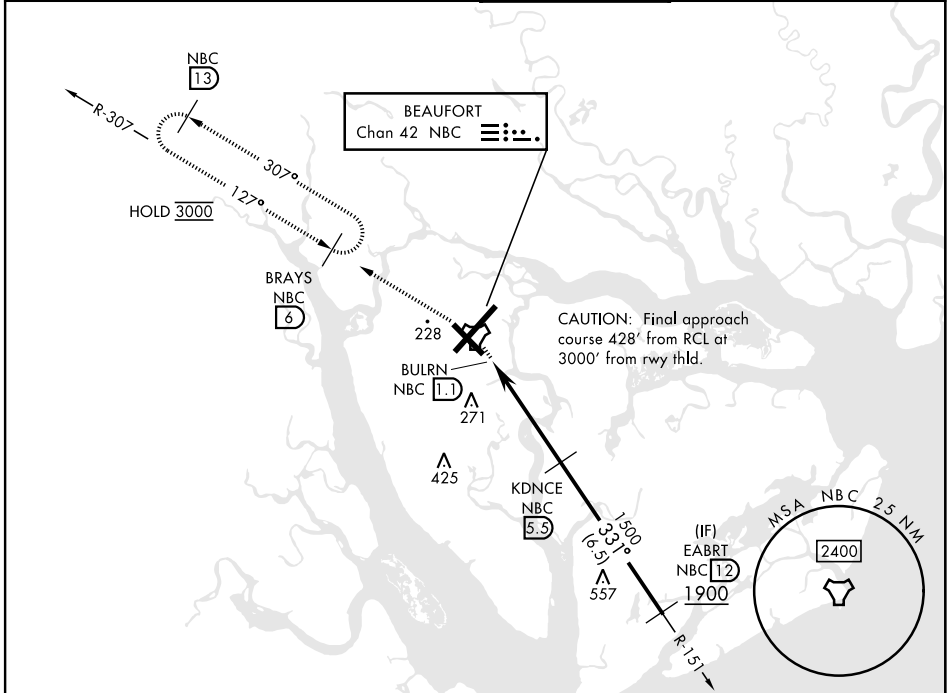
TACAN NBC Chan <b>42</b>	APCH CRS <b>331°</b>	Rwy ldg TDZE Arprt Elev <b>8000</b> <b>25</b> <b>37</b>
-----------------------------	-------------------------	--

[USN]

BEAUFORT MCAS (MERRITT FLD) (KNBC)

**MISSED APPROACH:** Climb to 3000 on NBC TACAN R-307 to BRAYS and hold. Continue climb in hold to 3000.

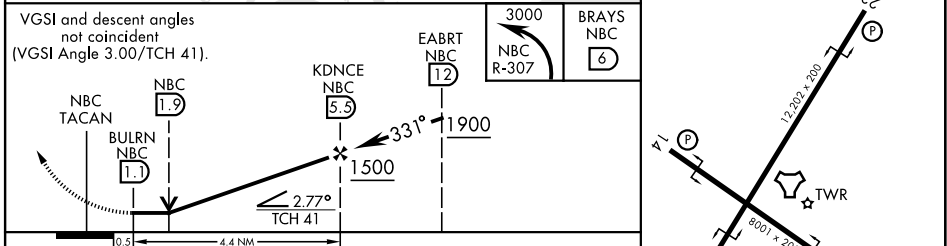
ATIS ★ <b>279.525</b>	APP CON <b>125.125 292.125</b> (ABV 3000) <b>123.7 269.125</b> (3000 and BLW)	TOWER★ <b>119.05 342.875</b>	GND CON <b>128.15 348.625</b>	ASR/PAR
--------------------------	---	---------------------------------	----------------------------------	---------



SE-2, 14 MAY 2026 to 11 JUN 2026

SE-2, 14 MAY 2026 to 11 JUN 2026

ELEV	37	TDZE	25
------	----	------	----



CATEGORY	A	B	C	D	E
S-32	480-1 455 (500-1)		480-1 5/8	455 (500-1 1/2)	
CIRCLING	560-1 523 (600-1)		580-1 1/2 543 (600-1 1/2)	620-2 583 (600-2)	740-2 1/2 703 (800-2 1/2)

BEAUFORT, SOUTH CAROLINA 32°29'N-80°43'W BEAUFORT MCAS (MERRITT FLD) (KNBC)

Amdt 2 25DEC25

# TACAN RWY 32

