

| | | |
|--|------------------------|--|
| LOC/DME I-OOS 111.55 Chan 52 (Y) | APP CRS 095° | Rwy Ldg 5000 TDZE 39 Apt Elev 55 |
|--|------------------------|--|

ILS or LOC RWY 9R

ORLANDO SANFORD INTL (SFB)

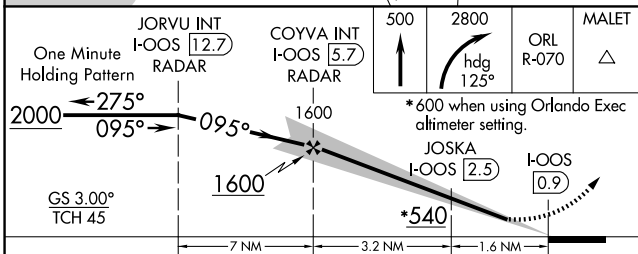
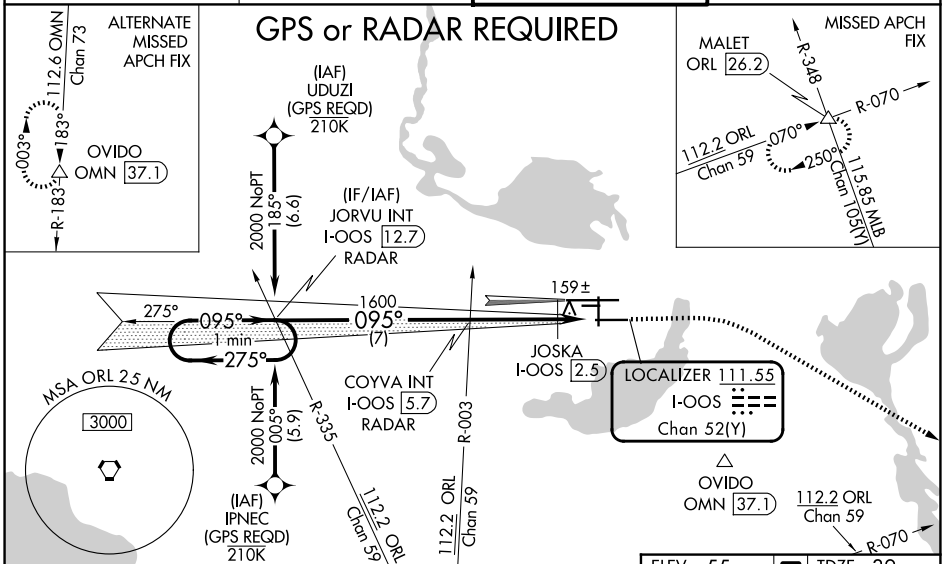
⚠ When local altimeter setting not received, use Orlando Exec altimeter setting and increase S-ILS DA to 282, and all MDA 60 feet; increase S-LOC 9R Cat C, D visibility ¼ mile, Circling Cat C visibility ½ mile and JOSKA Fix Minimums S-LOC 9R Cats C, D visibility ¼ mile. Simultaneous approach authorized with Rwy 9L. Night landing: Rwy 27C NA.

MALS R



MISSED APPROACH: Climb to 500 then climbing right turn to 2800 on heading 125° and ORL VORTAC R-070 to MALET INT/ORL 26.2 DME and hold.

| | | | |
|------------------------|---|---|---------------------------------|
| ATIS 125.975 | ORLANDO APP CON 135.3 351.9 (N) 125.225 351.9 (S) | SANFORD TOWER ★ 120.3 (CTAF) 0 254.35 | GND CON 121.35 254.35 |
|------------------------|---|---|---------------------------------|



| | | | |
|--|---------------------|-----------|----------------|
| ELEV 55 | D TDZE 39 | | |
| JORVU INT I-OOS 12.7 | COYVA INT I-OOS 5.7 | ORL R-070 | MALET |
| * 600 when using Orlando Exec altimeter setting. | | | |
| | | | |
| MIRL Rwy 9C-27C and 18-36 | | | |
| HIRL Rwy 9L-27R and 9R-27L | | | |
| REIL Rwys 9C, 18, 27L and 36 | | | |
| FAF to MAP 4.8 NM | | | |
| Knots | 60 | 90 | 120 150 180 |
| Min:Sec | 4:48 | 3:12 | 2:24 1:55 1:36 |

| CATEGORY | A | B | C | D |
|-----------------------------------|-------------------|---|---------------------------------------|---|
| S-ILS 9R | 239-½ | | 200 (200-½) | |
| S-LOC 9R | 540-½ 501 (500-½) | | 540-1 501 (500-1) | |
| CIRCLING | 580-1 525 (600-1) | | 600-1½ 545 (600-1½) 640-2 585 (600-2) | |
| JOSKA FIX MINIMUMS (DME REQUIRED) | | | | |
| S-LOC 9R | 440-½ 401 (400-½) | | 440-¾ 401 (400-¾) | |
| CIRCLING | 580-1 525 (600-1) | | 600-1½ 545 (600-1½) 640-2 585 (600-2) | |