

APP CRS	Rwy Ldg	5839
275°	TDZE	28
	Apt Elev	55

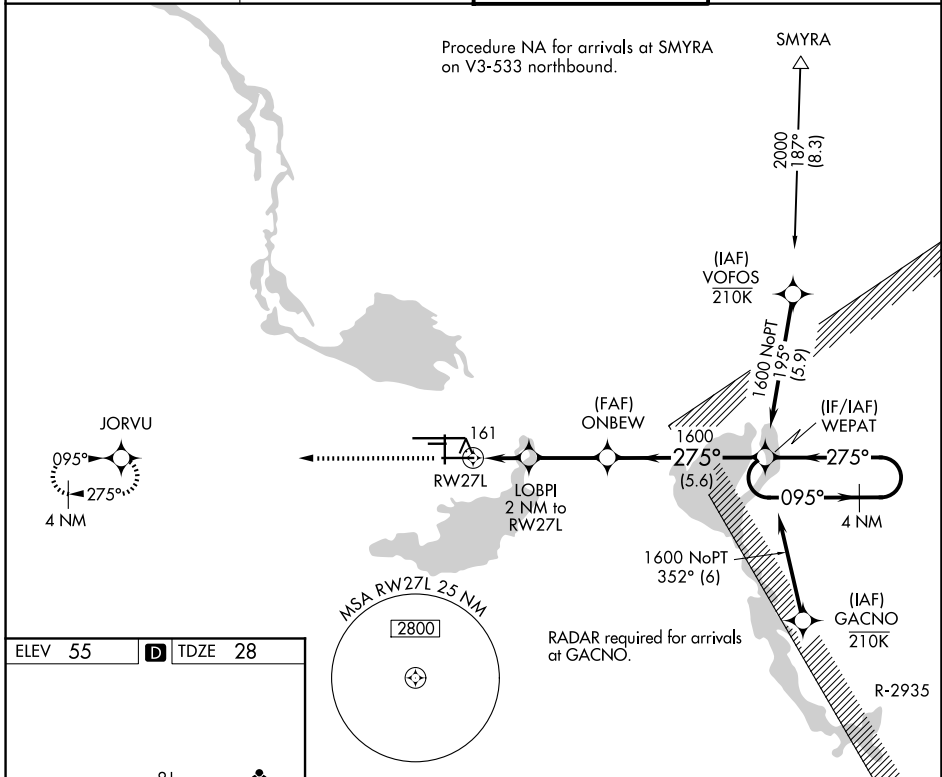
RNAV (GPS) RWY 27L

ORLANDO SANFORD INTL (SF'B)

⚠ Night Landing: Rwy 27C NA. DME/DME RNP-0.3 NA. Visibility reduction by helicopters NA. When local altimeter setting not received, use Orlando Exec altimeter setting: increase all MDAs 60 feet and visibility Cat C ¼ SM. VDP NA when using Orlando Exec altimeter setting.

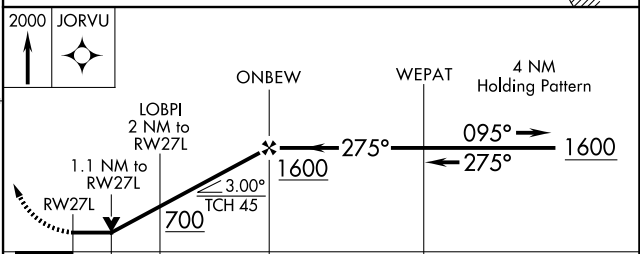
MISSED APPROACH: Climb to 2000 direct JORVU and hold.

ATIS 125.975	ORLANDO APP CON 135.3 351.9 (N) 125.225 351.9 (S)	SANFORD TOWER★ 120.3 (CTAF) 0 254.35	GND CON 121.35 254.35
------------------------	---	--	---------------------------------



ELEV 55	D	TDZE 28
---------	----------	---------

MIRL Rwy 9C-27C and 18-36 **ⓘ**
 HIRL Rwy 9L-27R and 9R-27L **ⓘ**
 REIL Rws 9C, 18, 27L and 36



CATEGORY	A	B	C	D
LNAV MDA	420-1	392 (400-1)	420-1½ 392 (400-1½)	420-2 392 (400-2)
CIRCLING	580-1	525 (600-1)	600-1½ 545 (600-1½)	640-2 585 (600-2)

SE-3, 14 MAY 2026 to 11 JUN 2026

SE-3, 14 MAY 2026 to 11 JUN 2026