

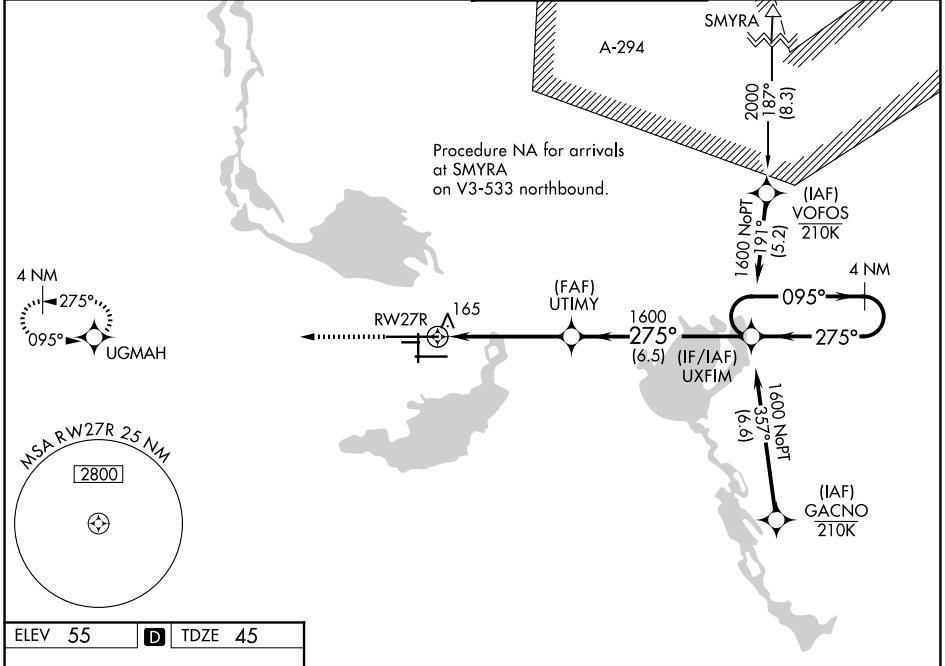
WAAS CH <b>63209</b> <b>W27A</b>	APP CRS <b>275°</b>	Rwy Ldg <b>11002</b> TDZE <b>45</b> Apt Elev <b>55</b>
--	------------------------	--

# RNAV (GPS) RWY 27R

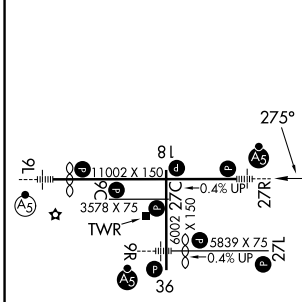
ORLANDO SANFORD INTL (SF'B)

For uncompensated Baro-VNAV systems, LNAV/VNAV NA below 0°C (32°F) or above 54°C (130°F). DME/DME RNP-0.3 NA. For inop ALS, increase LNAV/VNAV all Cats visibility to 1½ SM, increase LNAV Cat C/D visibility to 1 SM.	MALSR 	MISSED APPROACH: Climb to 2000 direct UGMAH and hold.

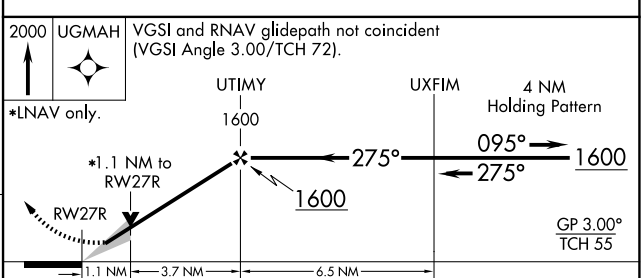
ATIS <b>125.975</b>	ORLANDO APP CON <b>135.3 351.9 (N)</b> <b>125.225 351.9 (S)</b>	SANFORD TOWER ★ <b>120.3 (CTAF) 0 254.35</b>	GND CON <b>121.35 254.35</b>
------------------------	---	---	---------------------------------



ELEV 55	<b>D</b>	TDZE 45
---------	----------	---------



MIRL Rwy 9C-27C and 18-36 **L**  
 HIRL Rwy 9L-27R and 9R-27L **L**  
 REIL Rwy 9C, 18, 27L and 36



CATEGORY	A	B	C	D
LPV DA	245-½		200 (200-½)	
LNAV/VNAV DA	425-⅞		380 (400-⅞)	
LNAV MDA	420-½	375 (400-½)	420-⅝	375 (400-⅝)
CIRCLING	580-1	525 (600-1)	600-1½ 545 (600-1½)	640-2 585 (600-2)