

# HI-TACAN Z RWY 13R

TACAN NQI Chan <b>125</b>	APCH CRS <b>139°</b>	Rwy Idg TDZE Arpt Elev <b>8000</b> <b>50</b> <b>50</b>	[USN]	KINGSVILLE NAS (KNQI)
------------------------------	-------------------------	---	-------	-----------------------

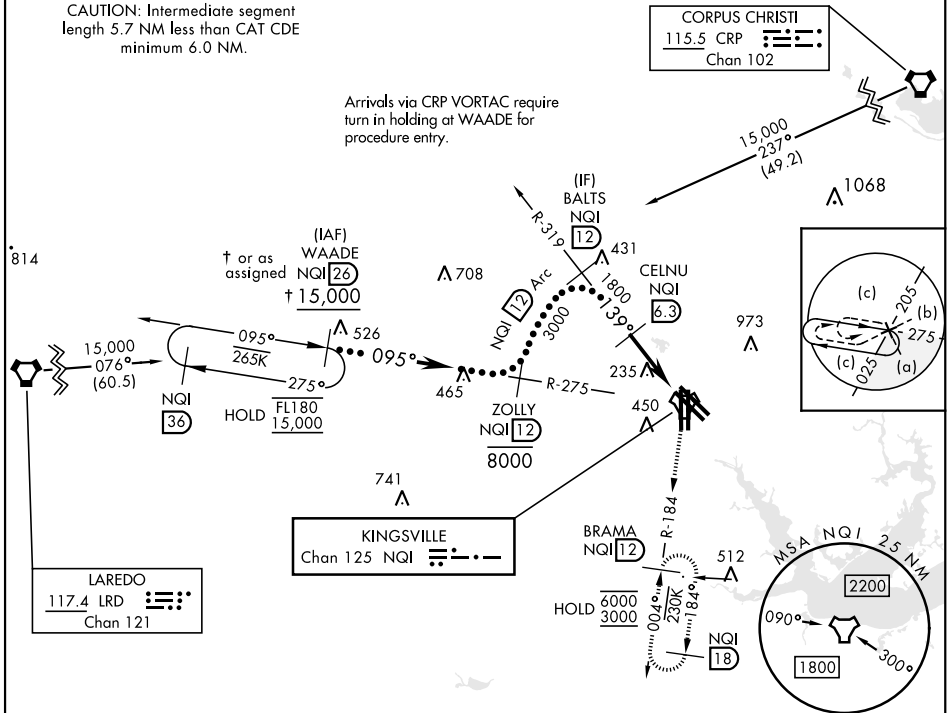
**MISSED APPROACH:** Climbing right turn to 3000 to intercept NQI TACAN R-184 to BRAMA and hold.

ATIS ★ <b>282.25</b>	APP CON <b>119.9 290.45</b>	TOWER ★ <b>124.1 377.05</b>	GND CON <b>239.05</b>	CLNC DEL <b>328.4</b>	ASR/PAR
-------------------------	--------------------------------	--------------------------------	--------------------------	--------------------------	---------

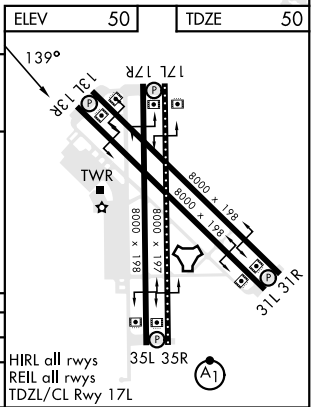
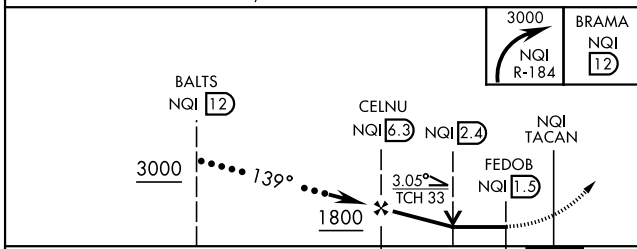
CAUTION: Intermediate segment length 5.7 NM less than CAT CDE minimum 6.0 NM.

Arrivals via CRP VORTAC require turn in holding at WAADE for procedure entry.

CORPUS CHRISTI  
115.5 CRP  
Chan 102



EMERG SAFE ALT 100 NM 16,200



CATEGORY	C	D	E
S-13R	520-1 $\frac{3}{8}$	470 (500-1 $\frac{3}{8}$ )	
CIRCLING	760-2 710 (800-2)	760-2 $\frac{1}{4}$ 710 (800-2 $\frac{1}{4}$ )	760-2 $\frac{1}{2}$ 710 (800-2 $\frac{1}{2}$ )

HIRL all rwys  
REIL all rwys  
TDZL/CL Rwy 17L

# HI-TACAN Z RWY 13R



SC-3, 14 MAY 2026 to 11 JUN 2026

SC-3, 14 MAY 2026 to 11 JUN 2026