

24361

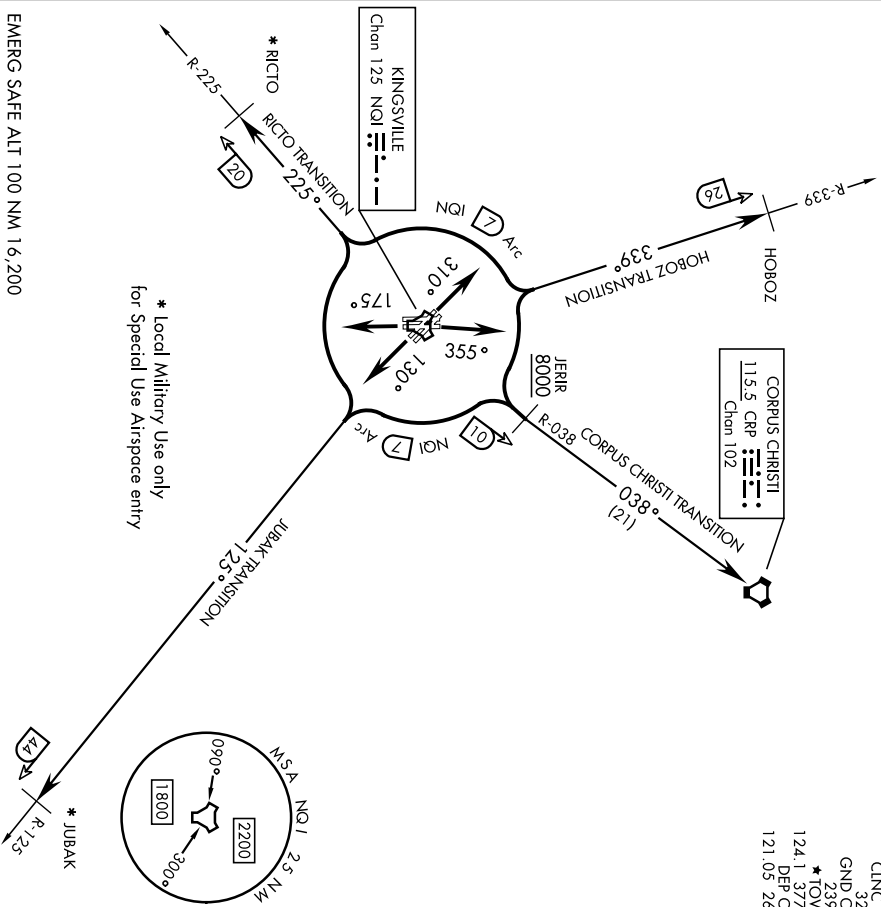
KINGSVILLE FOUR DEPARTURE (NQ14.NQ1)

[USN]

KINGSVILLE NAS (KNQ1)
KINGSVILLE, TEXAS

502

ATIS * 282.25
CLN 328
GND CON 239.05
* TOWER 124.1 377.05
DFR CON 121.05 266.8



EMERG SAFE ALT 100 NM 16,200

* Local Military Use only
for Special Use Airspace entry

DEPARTURE ROUTE DESCRIPTION

- TAKEOFF RWY 13L/R: Climb via heading 130° to join NQ1 TACAN 7 DME arc, thence...
- TAKEOFF RWY 17L/R: Climb via heading 175° to join NQ1 TACAN 7 DME arc, thence...
- TAKEOFF RWY 31L/R: Climb via heading 310° to join NQ1 TACAN 7 DME arc, thence...
- TAKEOFF RWY 35L/R: Climb via heading 355° to join NQ1 TACAN 7 DME arc, thence...

CORPUS CHRISTI TRANSITION (NQ14.CRP):

Rwys 13L/R and 17L/R: ...turn left to intercept NQ1 7 DME arc and arc NE. Turn right to intercept NQ1 R-038 to cross JERIR at or above 8000. Then on NQ1 R-038 to CRP VORTAC. Rwys 31L/R and 35L/R: ...turn right to intercept NQ1 7 DME arc and arc NE. Turn left to intercept NQ1 R-038 to cross JERIR at or above 8000. Then on NQ1 R-038 to CRP VORTAC.

(CONTINUED ON FOLLOWING PAGE)

KINGSVILLE FOUR DEPARTURE (NQ14.NQ1)

Orig 26DEC24

KINGSVILLE, TEXAS
KINGSVILLE NAS (KNQ1)



DEPARTURE ROUTE DESCRIPTION
(CONTINUED)

HOBZO TRANSITION (NQ14.HOBZO):

Rwys 13L/R and 35L/R: ...turn left to intercept NQ1 7 DME arc and arc NW. Turn right to intercept NQ1 R-339 to HOBZO.

Rwys 17L/R and 31L/R: ...turn right to intercept NQ1 7 DME arc and arc NW. Turn left to intercept NQ1 R-339 to HOBZO.

JUBAK TRANSITION (NQ14.JUBAK): *

Rwys 13L/R and 17L/R: ...turn left to intercept NQ1 7 DME arc and arc SE. Turn right to intercept NQ1 R-125 to JUBAK.

Rwys 31L/R and 35L/R: ...turn right to intercept NQ1 7 DME arc and arc SE. Turn left to intercept NQ1 R-125 to JUBAK.

RICTO TRANSITION (NQ14.RICTO): *

Rwy 13L/R and 17L/R: ...turn right to intercept NQ1 7 DME arc and arc SW. Turn left to intercept NQ1 R-225 to RICTO.

Rwy 31L/R and 35L/R: ...turn left to intercept NQ1 7 DME arc and arc SW. Turn right to intercept NQ1 R-225 to RICTO.

* RICTO and JUBAK transitions are for local use for Special Use Airspace entry only.

LOST COMMUNICATIONS: If no transmissions are received one minute after departure, climb to assigned altitude, proceed direct assigned NAVAID or intercept NQ1 TACAN 7 DME arc, arc to respective departure radial then via departure radial to assigned departure fix. Then via assigned transition or route. Once established on departure radial climb to filed altitude.