

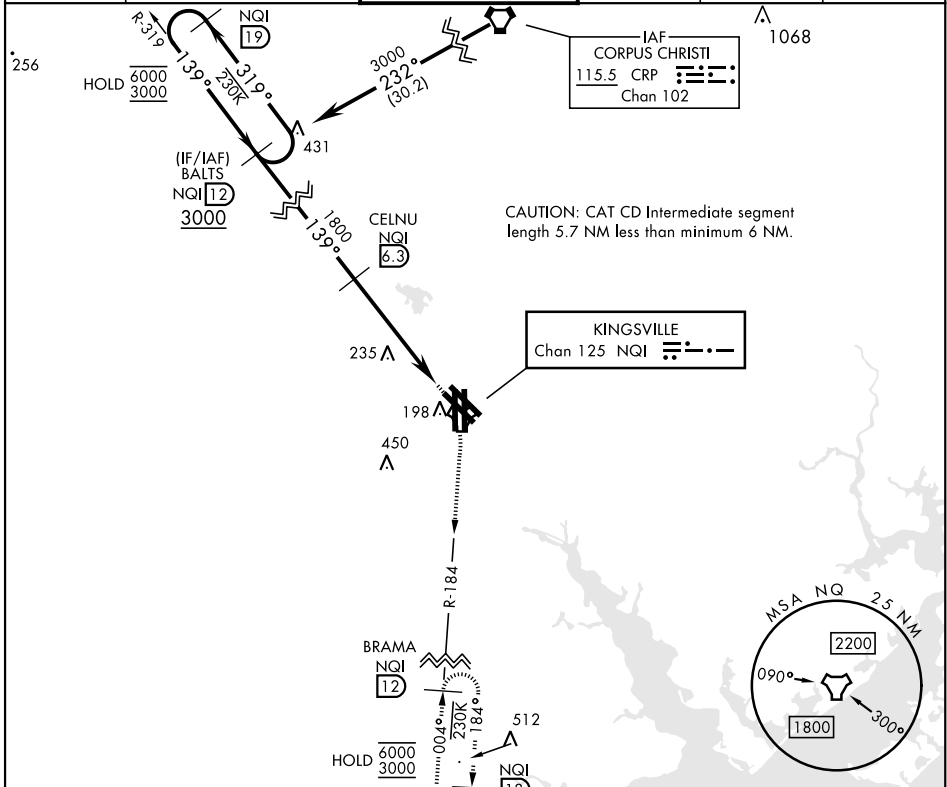
# TACAN RWY 13L/R

TACAN NQI Chan 125	APCH CRS 139°	Rwy 13L Idg TDZE 49 Arprt Elev 50	Rwy 13R Idg TDZE 50 Arprt Elev 50
-----------------------	------------------	---	---

[USN] KINGSVILLE NAS (KNQI)

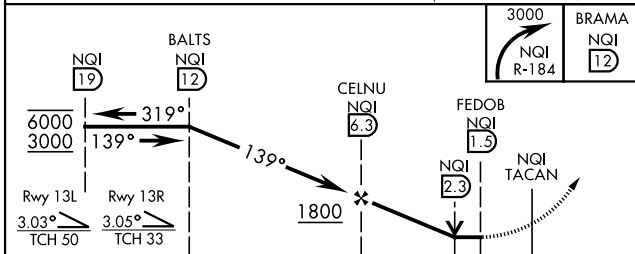
MISSED APPROACH: Climbing right turn to 3000 to intercept NQI TACAN R-184 to BRAMA and hold.

ATIS ★ 282.25	APP CON 119.9 290.45	TOWER★ 124.1 377.05	GND CON 239.05	CLNC DEL 328.4	ASR/PAR
------------------	-------------------------	------------------------	-------------------	-------------------	---------

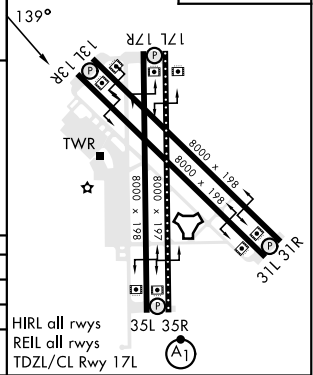


CAUTION: CAT CD Intermediate segment length 5.7 NM less than minimum 6 NM.

EMERG SAFE ALT 100 NM 16,200



ELEV 50	TDZE 49 13L
	TDZE 50 13R



CATEGORY	A	B	C	D
S-13L	520-1 471 (500-1)	520-1 471 (500-1)	520-1 471 (500-1)	520-1 471 (500-1)
S-13R	520-1 470 (500-1)	520-1 470 (500-1)	520-1 470 (500-1)	520-1 470 (500-1)
CIRCLING	540-1 490 (500-1)	540-1 490 (500-1)	710 (800-2)	710 (800-2 1/4)

# TACAN RWY 13L/R

SC-3, 14 MAY 2026 to 11 JUN 2026

SC-3, 14 MAY 2026 to 11 JUN 2026