

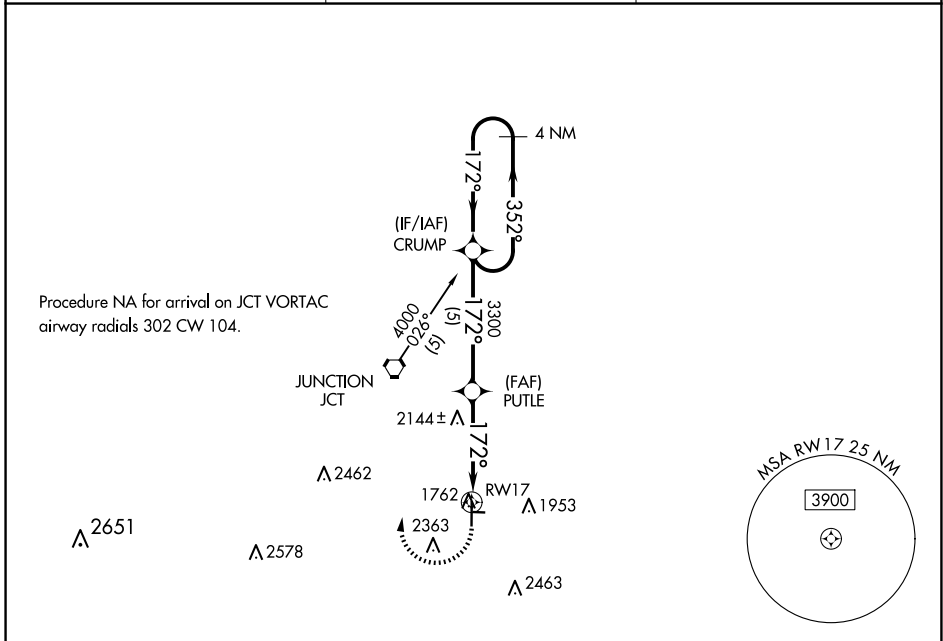
APP CRS <b>172°</b>	Rwy Idg <b>5004</b>
	TDZE <b>1751</b>
	Apt Elev <b>1754</b>

# RNAV (GPS) RWY 17

KIMBLE COUNTY (JCT)

RNP APCH - GPS.	MISSED APPROACH: Climbing right turn to 4000 direct CRUMP WP and hold.
<p>▼ Circling NA to Rwy 8-26. Rwy 17 helicopter visibility reduction below 3/4 SM NA.</p> <p>▲ NA</p>	

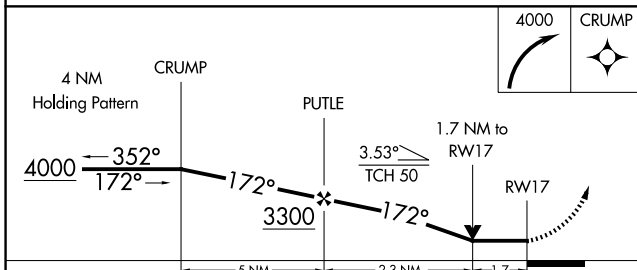
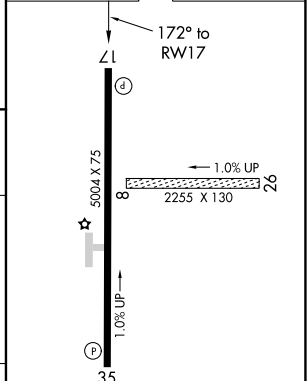
ASOS <b>119.275</b>	HOUSTON CENTER <b>125.75 346.4</b>	UNICOM <b>122.8</b> (CTAF) <b>1</b>
------------------------	---------------------------------------	--



SC-3, 14 MAY 2026 to 11 JUN 2026

SC-3, 14 MAY 2026 to 11 JUN 2026

ELEV 1754	TDZE 1751
-----------	-----------



CATEGORY	A	B	C	D
LNAV MDA	2420-1	669 (700-1)	2420-1 3/4 669 (700-1 3/4)	NA
CIRCLING	2420-1 666 (700-1)	2680-1 1/4 926 (1000-1 1/4)	2780-3 1026 (1100-3)	NA

MIRL Rwy 17-35 **1**