

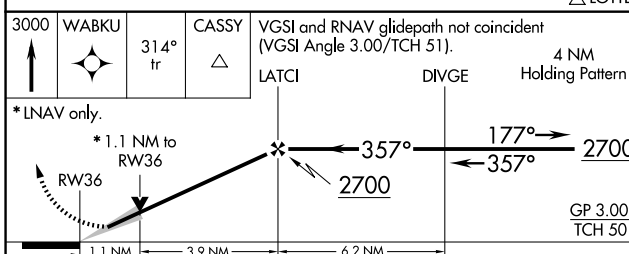
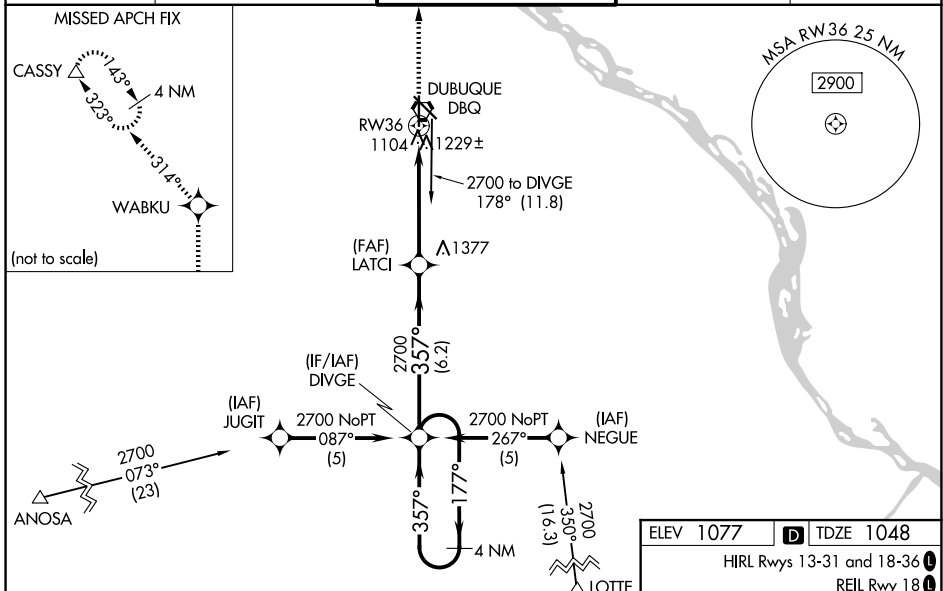
WAAS CH 62807 W36A	APP CRS 357°	Rwy Ldg TDZE 1048 Apt Elev 1077
--	------------------------	---

RNAV (GPS) RWY 36

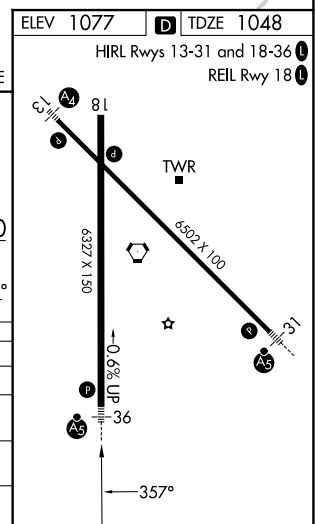
DUBUQUE RGNL (DBQ)

<p>RNP APCH.</p> <p>⚠ For uncompensated Baro-VNAV systems, LNAV/VNAV NA below -17°C or above 46°C. Baro-VNAV and VDP NA when using Monticello altimeter setting. When local altimeter setting not received, use Monticello altimeter setting and increase all DA 88 feet and all MDA 100 feet, increase LNAV/VNAV all Cats, LNAV Cats C and D and Circling Cat C visibility ¼ mile. For inop MALSRL when using Monticello altimeter setting, increase LPV all Cats visibility to RVR 5000. # RVR 1800 authorized with use of FD or AP or HUD to DA, NA when using Monticello altimeter setting.</p>	<p>MALSRL</p>	<p>MISSED APPROACH: Climb to 3000 direct WABKU and via 314° track to CASSY and hold.</p>
---	---------------	---

ATIS 127.25	CHICAGO CENTER 133.95 281.4	DUBUQUE TOWER ★ 119.5 (CTAF) 0 254.4	GND CON 121.8	UNICOM 122.95
-----------------------	---------------------------------------	---	-------------------------	-------------------------



CATEGORY	A	B	C	D
LPV DA#		1248/24	200 (200-½)	
LNAV/VNAV DA		1525/60	477 (500-1¼)	
LNAV MDA	1480/24	432 (500-½)	1480/40 432 (500-¾)	1480/50 432 (500-1)
CIRCLING	1580-1	503 (600-1)	1600-1½ 523 (600-1½)	1800-2¼ 723 (800-2¼)



NC-3, 14 MAY 2026 to 11 JUN 2026

NC-3, 14 MAY 2026 to 11 JUN 2026