

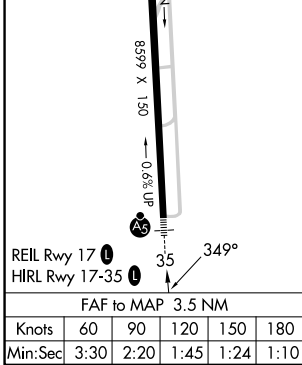
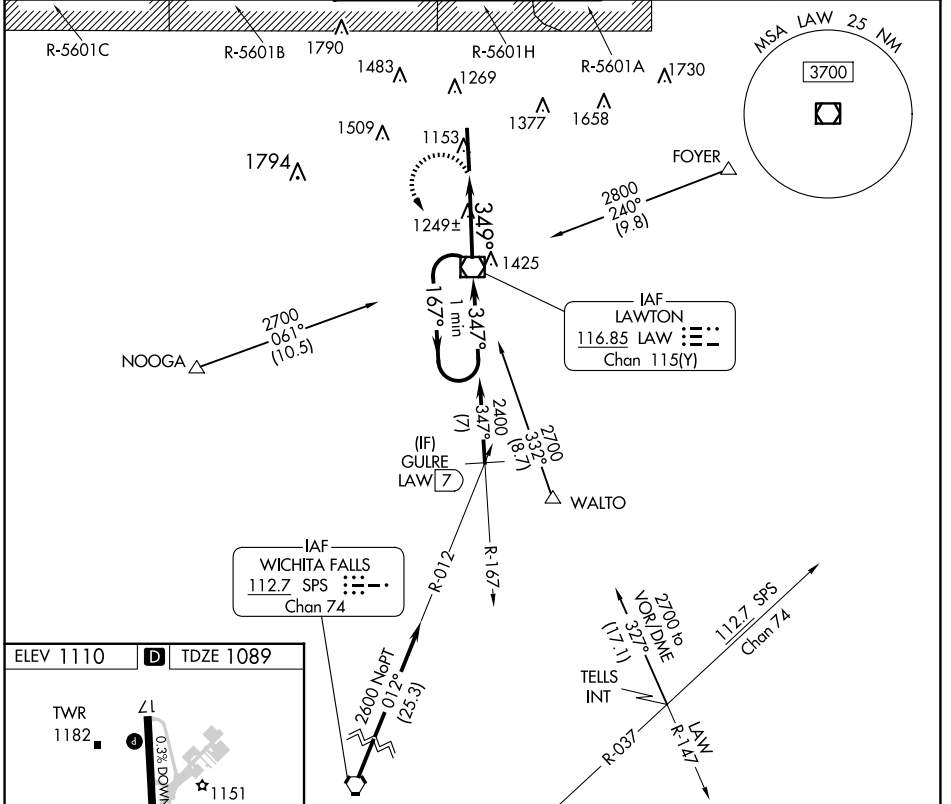
VOR/DME LAW <b>116.85</b> Chan <b>115(Y)</b>	APP CRS <b>349°</b>	Rwy Idg TDZE Apt Elev	<b>8599</b> <b>1089</b> <b>1110</b>
--	------------------------	-----------------------------	---

# VOR RWY 35

LAWTON-FORT SILL RGNL (LAW)

For inop ALS, increase Cat C/D visibility to 1½ SM. ASR	MALS 	MISSED APPROACH: Climbing left turn to 2800 direct LAW VOR/DME and hold, continue climb-in-hold to 2800.	

ATIS <b>120.75</b>	FORT SILL APP CON <b>120.55 322.4</b>	LAWTON TOWER ★ <b>119.9(CTAF) 257.8</b>	GND CON <b>121.9</b>	UNICOM <b>122.95</b>
-----------------------	--	--	-------------------------	-------------------------



2800	LAW	LAW VOR/DME				One Minute Holding Pattern	
		LAW 2.5	167°	2700	347°		
		LAW 3.5	349°	2400	347°		
		1.1 NM	2.4 NM	TCH 45			
CATEGORY	A	B	C	D			
S-35	1500-½	411 (500-½)	1500-¾	411 (500-¾)			
CIRCLING	1620-1	510 (600-1)	1820-2	1820-2¼			
			710 (800-2)	710 (800-2¼)			

SC-1, 14 MAY 2026 to 11 JUN 2026

SC-1, 14 MAY 2026 to 11 JUN 2026