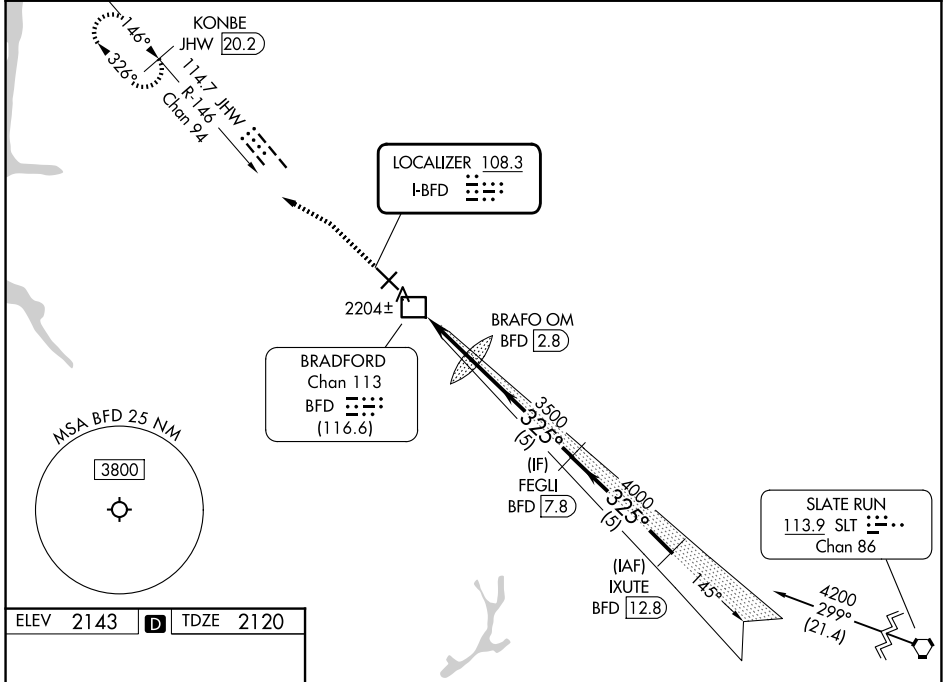


LOC I-BFD <b>108.3</b>	APP CRS <b>325°</b>	Rwy Ldg TDZE Apt Elev	<b>6306</b> <b>2120</b> <b>2143</b>
---------------------------	------------------------	-----------------------------	---

# ILS or LOC RWY 32

BRADFORD RGNL (BFD)

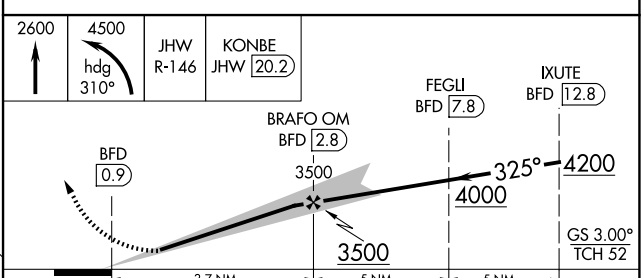
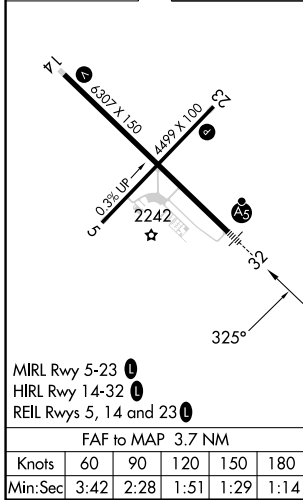
DME required		MALSR 	MISSED APPROACH: Climb to 2600 then climbing left turn to 4500 on heading 310° and on JHW VOR/DME R-146 to KONBE/JHW 20.2 DME and hold.
NA	Inop table does not apply to S-ILS 32 and S-LOC 32 Cats A and B. For inop ALS, increase S-LOC 32 Cat C/D visibility to 1½ SM.		
ASOS <b>133.825</b>	CLEVELAND CENTER <b>124.325 353.85</b>	UNICOM <b>123.075 (CTAF) 0</b>	



NE-4, 14 MAY 2026 to 11 JUN 2026

NE-4, 14 MAY 2026 to 11 JUN 2026

ELEV 2143	<b>D</b>	TDZE 2120
-----------	----------	-----------



CATEGORY	A	B	C	D
S-ILS 32		2370-1	250 (300-1)	
S-LOC 32		2480-1	360 (400-1)	
CIRCLING	2600-1 457 (500-1)	2620-1 477 (500-1)	2720-1½ 577 (600-1½)	2760-2 617 (700-2)