

WAAS CH <b>78123</b> <b>W26A</b>	APP CRS <b>257°</b>	Rwy Ldg TDZE <b>384</b> Apt Elev <b>403</b>
--	------------------------	---

# RNAV (GPS) RWY 26

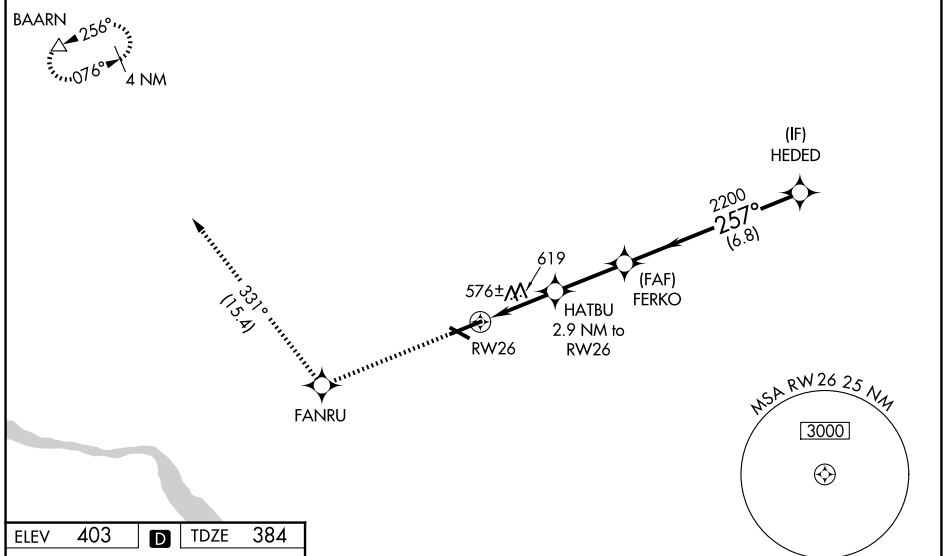
LANCASTER (LNS)

**⚠** Night landing: Rwy 13, 31 NA. For uncompensated Baro-VNAV systems, LNAV/VNAV NA below -1.5°C (5°F) or above 41°C (105°F). DME/DME RNP-0.3 NA. Helicopter visibility reduction below 1 SM NA. When local altimeter setting not received, use Harrisburg Intl altimeter setting and increase all DA 64 feet, all MDA 80 feet, increase LPV and LNAV/VNAV visibility all Cats and LNAV and Circling Cat C and D visibility ¼ mile. Baro-VNAV and VDP NA when using Harrisburg Intl altimeter setting.

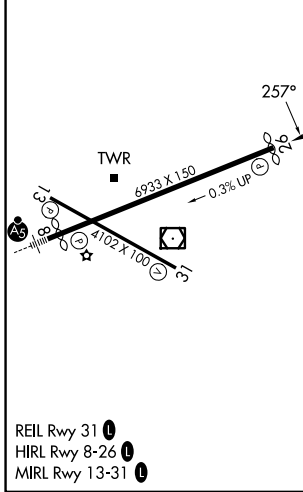
**MISSED APPROACH:**  
Climb to 3000 direct FANRU and on track 331° to BAARN and hold.

ATIS <b>125,675</b>	HARRISBURG APP CON <b>126.45 281.525</b>	LANCASTER TOWER * <b>120.9 (CTAF) 0 251.1</b>	GND CON <b>121.8</b>	UNICOM <b>122.95</b>
------------------------	---	--	-------------------------	-------------------------

## RADAR REQUIRED



ELEV <b>403</b>	<b>D</b>	TDZE <b>384</b>
-----------------	----------	-----------------



3000	FANRU	tr 331°	BAARN	HEDED
*LNAV only		HATBU	FERKO	3000
		*1.9 NM to RW26	2200	3000
		*2.9 NM to RW26	2200	GP 3.00°
		*1340		TCH 47
		1.9	1 NM	2.7 NM
		6.8 NM		
CATEGORY	A		B	
LPV DA	634-3/4		250 (300-3/4)	
LNAV/VNAV DA	905-13/4		521 (500-13/4)	
LNAV MDA	1020-1	636 (700-1)	1020-17/8	636 (700-17/8)
CIRCLING	1020-1	617 (700-1)	1020-17/8	1060-2
			617 (700-17/8)	657 (700-2)

NE-4, 14 MAY 2026 to 11 JUN 2026

NE-4, 14 MAY 2026 to 11 JUN 2026