


VOR/DME LRP 117.3 Chan 120	APP CRS 090°	Rwy Ldg 6118 TDZE 399 Apt Elev 403
--	------------------------	---

VOR RWY 8

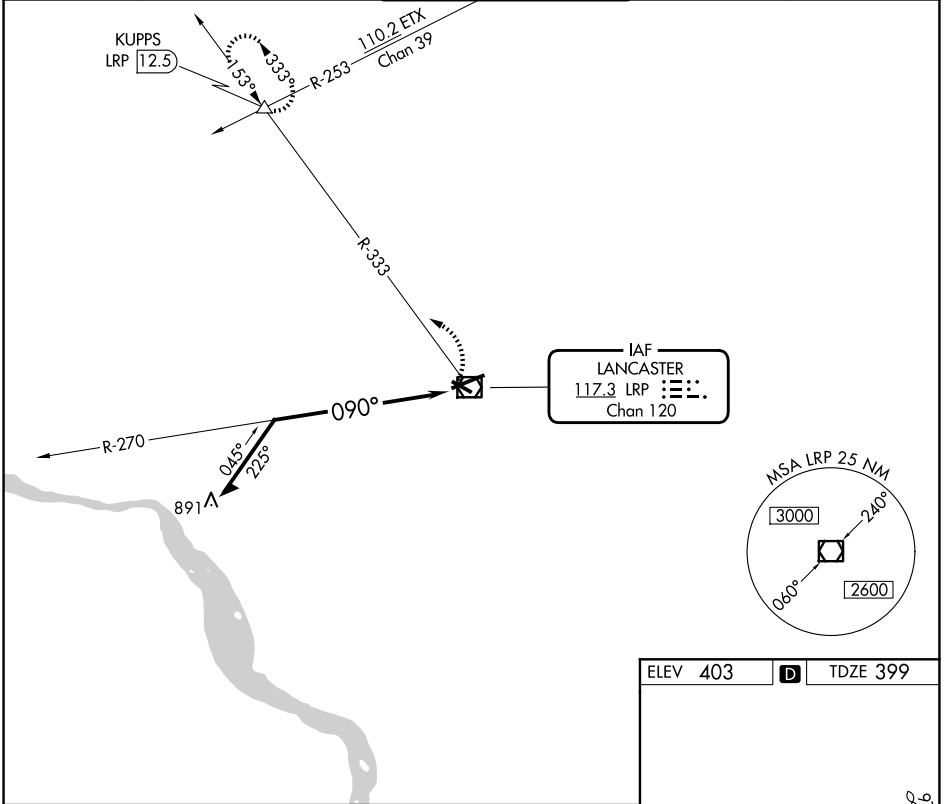
LANCASTER (LNS)

⚠ Night landing: Rwy 13, 31 NA. Inop table does not apply. When local altimeter setting not received, use Harrisburg Intl altimeter setting and increase all MDA 80 feet.

MALSR 

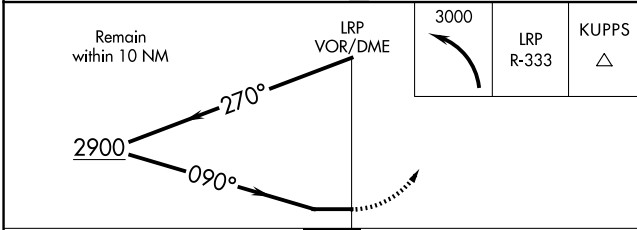
MISSED APPROACH: Climbing left turn to 3000 via LRP VOR/DME R-333 to KUPPS INT/LRP 12.5 DME and hold.

ATIS 125.675	HARRISBURG APP CON 126.45 281.525	LANCASTER TOWER ★ 120.9 (CTAF) 251.1	GND CON 121.8	UNICOM 122.95
------------------------	---	---	-------------------------	-------------------------



NE-4, 14 MAY 2026 to 11 JUN 2026

NE-4, 14 MAY 2026 to 11 JUN 2026



ELEV 403	D	TDZE 399
----------	----------	----------

The TWR diagram shows the tower location and associated altitudes: 6933 X 150 and 4102 X 100. A 0.3% upward slope is indicated. Other symbols include a star, a circle with a cross, and a circle with a dot.

CATEGORY	A	B	C	D
S-8	1400-1¼ 1001 (1000-1¼)	1400-1½ 1001 (1000-1½)	1400-3	1001 (1000-3)
CIRCLING	1400-1¼ 997 (1000-1¼)	1400-1½ 997 (1000-1½)	1400-3	997 (1000-3)

REIL Rwy 31 **1**
HIRL Rwy 8-26 **1**
MIRL Rwy 13-31 **1**