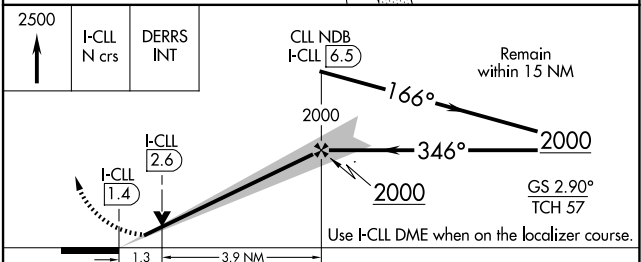
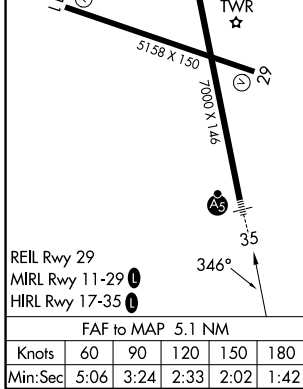
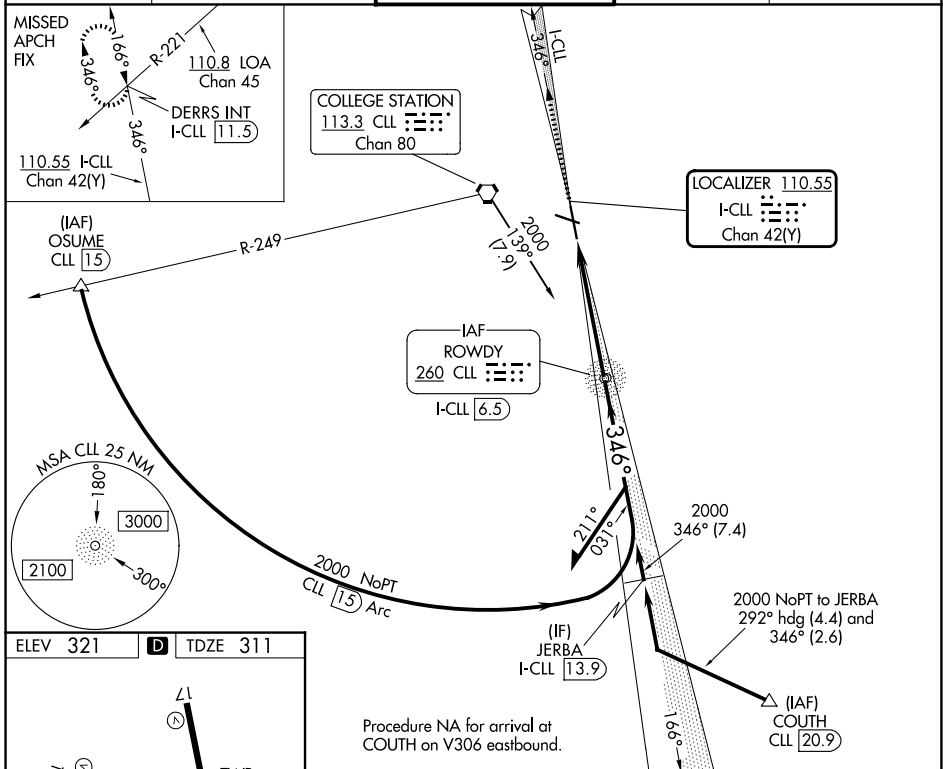


LOC/DME I-CLL <b>110.55</b> Chan 42(Y)	APP CRS <b>346°</b>	Rwy Ldg TDZE Apt Elev <b>6932</b> <b>311</b> <b>321</b>
----------------------------------------------	------------------------	------------------------------------------------------------------------

# ILS or LOC RWY 35

EASTERWOOD FLD (CLL)

ADF or DME required for procedure entry. ADF or DME required for LOC only.				
<p><b>▼</b> For inop ALS, increase S-ILS 35 Cat E visibility to 3/4 SM and S-LOC 35 Cat E visibility to 1 1/2 SM. ILS glideslope unusable for coupled approaches below 1050 feet MSL.</p> <p><b>▲</b></p>			MALSR 	MISSED APPROACH: Climb to 2500 on I-CLL north course to DERRS INT/I-CLL 11.5 DME and hold.
ATIS <b>126.85</b>	HOUSTON APP CON <b>134.3 360.85</b>	EASTERWOOD TOWER ★ <b>118.5 (CTAF) 284.7</b>	GND CON <b>128.7 284.7</b>	UNICOM <b>122.95</b>



CATEGORY	A	B	C	D	E
S-ILS 35	511-1/2 200 (200-1/2)				
S-LOC 35	760-1/2	449 (500-1/2)	760-7/8 449 (500-7/8)		
CIRCLING	860-1 539 (600-1)	880-1 559 (600-1)	1000-2 679 (700-2)	1180-2 3/4 859 (900-2 3/4)	1180-3 859 (900-3)

SC-5, 14 MAY 2026 to 11 JUN 2026

SC-5, 14 MAY 2026 to 11 JUN 2026