

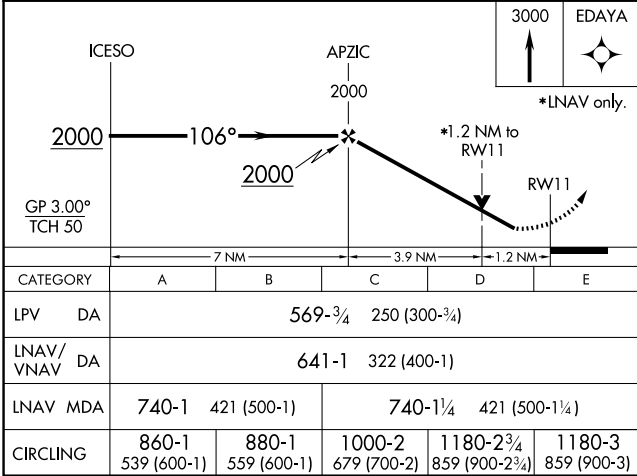
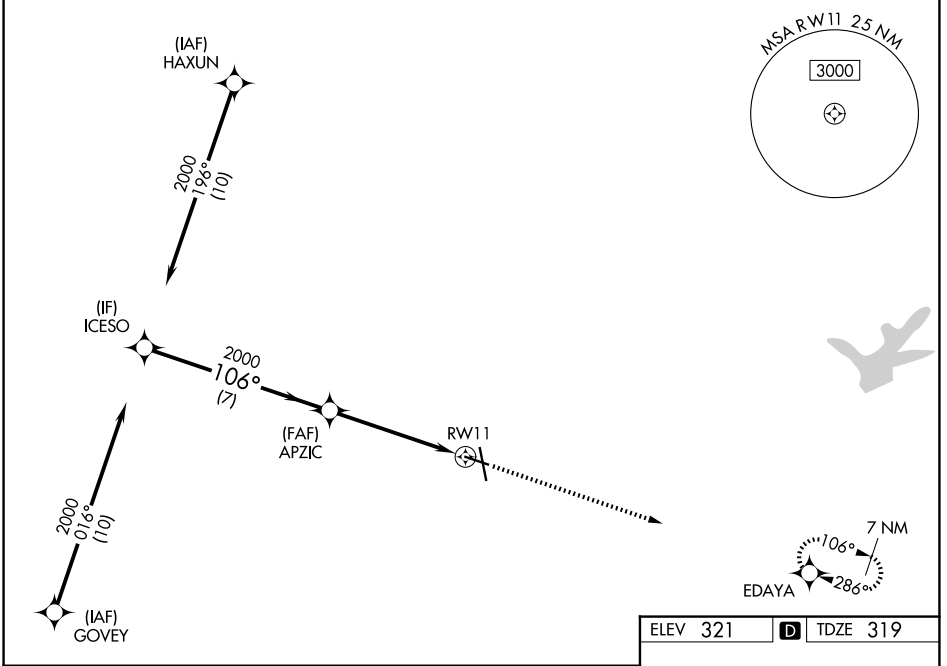
WAAS CH <b>65632</b> <b>W11A</b>	APP CRS <b>106°</b>	Rwy Ldg TDZE Apt Elev	<b>5158</b> <b>319</b> <b>321</b>
--	------------------------	-----------------------------	---

# RNAV (GPS) RWY 11

EASTERWOOD FLD (CLL)

RNP APCH.		MISSED APPROACH: Climb to 3000 direct EDAYA and hold.		
For uncompensated Baro-VNAV systems, LNAV/VNAV NA below -3°C or above 54°C. Rwy 11 helicopter visibility reduction below ¾ SM NA.				

ATIS <b>126.85</b>	HOUSTON APP CON <b>134.3 360.85</b>	EASTERWOOD TOWER ★ <b>118.5 (CTAF) 0 284.7</b>	GND CON <b>128.7 284.7</b>	UNICOM <b>122.95</b>
-----------------------	--	---	-------------------------------	-------------------------



ELEV 321	<b>D</b> TDZE 319
REIL Rwy 29 MIRL Rwy 11-29 <b>0</b> HIRL Rwy 17-35 <b>0</b>	

SC-5, 14 MAY 2026 to 11 JUN 2026

SC-5, 14 MAY 2026 to 11 JUN 2026