

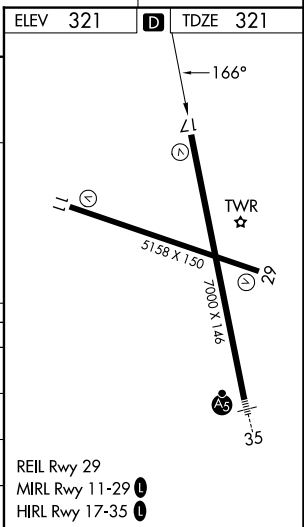
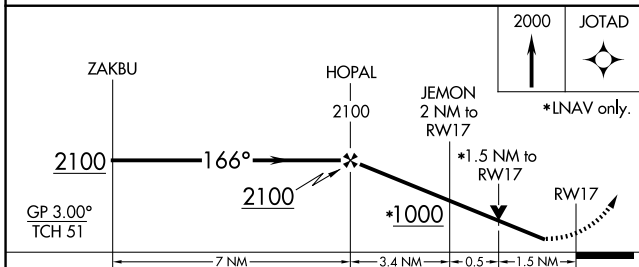
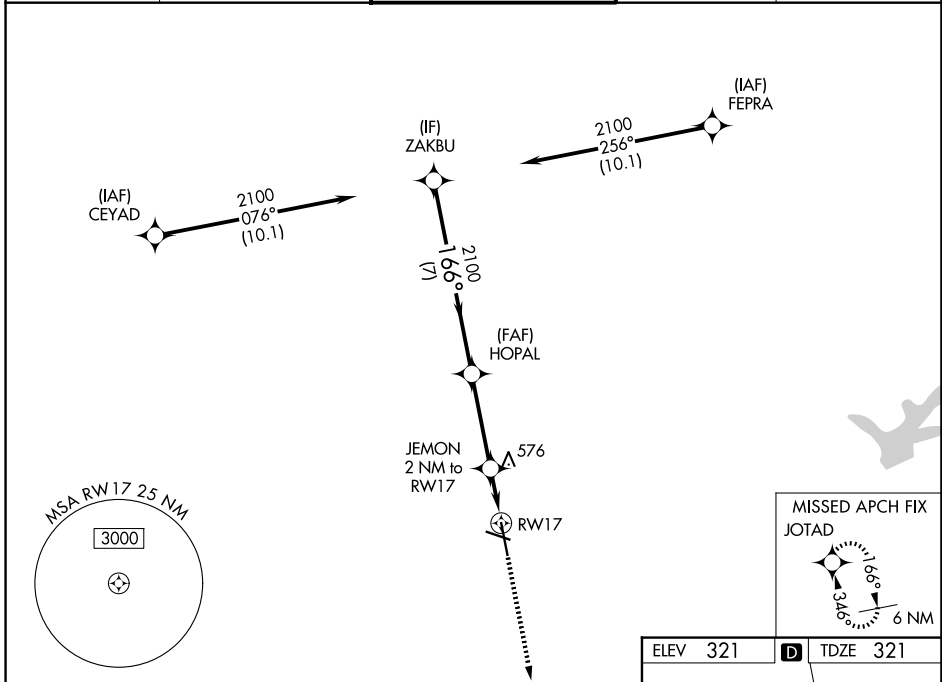
WAAS CH <b>78322</b> <b>W17A</b>	APP CRS <b>166°</b>	Rwy Ldg TDZE Apt Elev	<b>7000</b> <b>321</b> <b>321</b>
--	------------------------	-----------------------------	---

# RNAV (GPS) RWY 17

EASTERWOOD FLD (CLL)

RNP APCH.	For uncompensated Baro-VNAV systems, LNAV/VNAV NA below -3°C or above 54°C. Rwy 17 helicopter visibility reduction below 3/4 SM NA.	MISSED APPROACH: Climb to 2000 direct JOTAD and hold.
-----------	---	---

ATIS <b>126.85</b>	HOUSTON APP CON <b>134.3 360.85</b>	EASTERWOOD TOWER ★ <b>118.5 (CTAF) 0 284.7</b>	GND CON <b>128.7 284.7</b>	UNICOM <b>122.95</b>
-----------------------	--	---	-------------------------------	-------------------------



CATEGORY	A	B	C	D	E
LPV DA	571-3/4		250 (300-3/4)		
LNAV/VNAV DA	637-1		316 (400-1)		
LNAV MDA	840-1 519 (600-1)		840-1 3/8 519 (600-1 3/8)		
CIRCLING	860-1 539 (600-1)	880-1 559 (600-1)	1000-2 679 (700-2)	1180-2 3/4 859 (900-2 3/4)	1180-3 859 (900-3)

REIL Rwy 29  
MIRL Rwy 11-29  
HIRL Rwy 17-35

SC-5, 14 MAY 2026 to 11 JUN 2026

SC-5, 14 MAY 2026 to 11 JUN 2026