

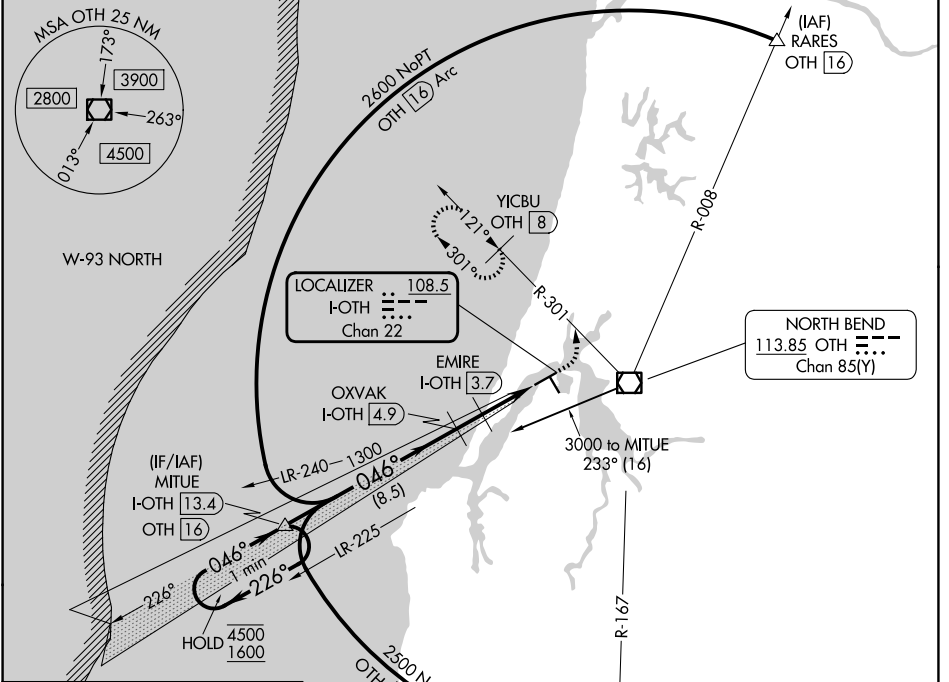
LOC/DME I-OTH 108.5 Chan 22	APP CRS 046°	Rwy Ldg TDZE Apt Elev	5320 16 17
--	------------------------	-----------------------------	---------------------------------------

ILS Z or LOC Z RWY 5

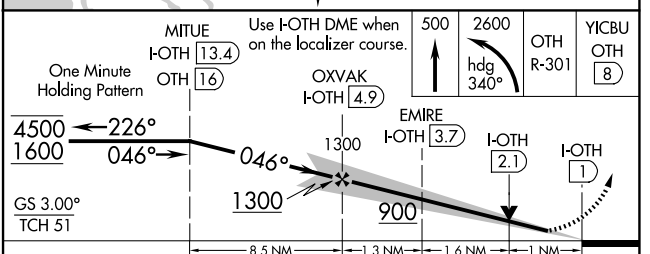
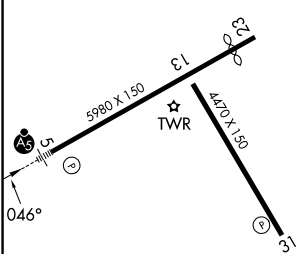
SOUTHWEST OREGON RGNL (OTH)

DME required.	MALSR	MISSED APPROACH: Climb to 500 then climbing left turn to 2600 on heading 340° and OTH VOR/DME R-301 to YICBU/OTH 8 DME and hold, continue climb-in-hold to 2600.
<p>⚠ Circling Rwy 13, 31 NA at night.</p>		

AWOS-3PT 135.075	SEATTLE CENTER 127.55 254.35	NORTH BEND TOWER* 118.45 (CTAF) 0	GND CON 127.1
----------------------------	--	---	-------------------------



ELEV 17	D	TDZE 16
---------	----------	---------



CATEGORY	A	B	C	D
S-ILS 5	216-1/2 200 (200-1/2)			
S-LOC 5	400-1/2	384 (400-1/2)	400-5/8	384 (400-5/8)
CIRCLING	680-1 663 (700-1)	820-1 803 (900-1)	1080-3 1063 (1100-3)	1160-3 1143 (1200-3)

HIRL Rwy 5-23 **0**
MIRL Rwy 13-31 **0**
REIL Rwy 13, 23 and 31 **0**

NW-1, 14 MAY 2026 to 11 JUN 2026

NW-1, 14 MAY 2026 to 11 JUN 2026