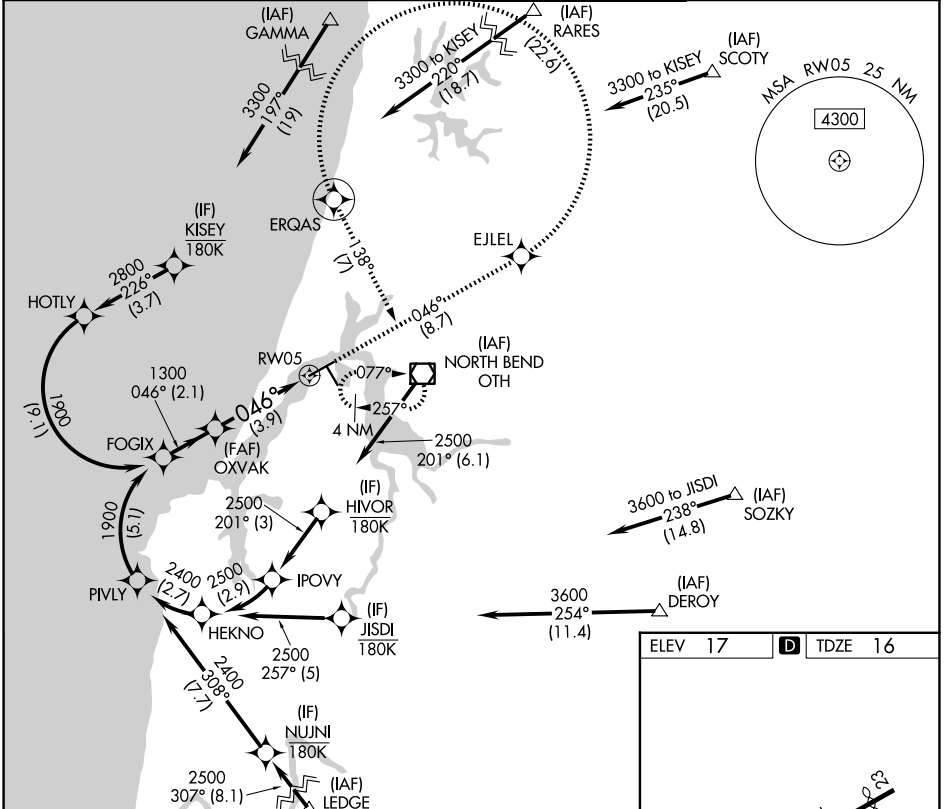


APP CRS	Rwy Ldg	<b>5320</b>
<b>046°</b>	TDZE	<b>16</b>
	Apt Elev	<b>17</b>

# RNAV (RNP) Z RWY 5

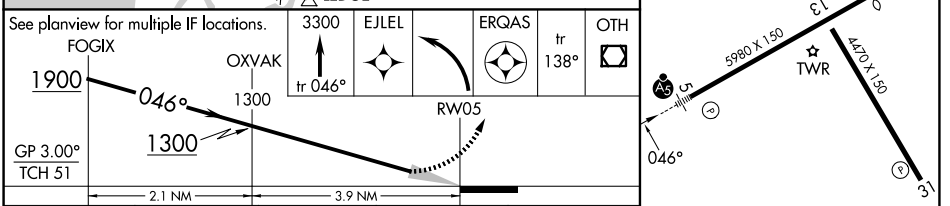
SOUTHWEST OREGON RGNL (OTH)

RNP AR APCH. RF required.		MALSR	MISSED APPROACH: Climb to 3300 on track 046° to EJLEL, left turn to ERQAS, and on track 138° to OTH VOR/DME and hold. *Missed approach requires minimum climb of 400 feet per NM to 1200. #Missed approach requires minimum climb of 255 feet per NM to 2400.	
<p>▼ For inop ALS, increase *RNP 0.11 all Cats visibility to 1 SM, #RNP 0.30 all Cats visibility to 1 1/8 SM, and RNP 0.30 all Cats visibility to 1 1/8 SM. For uncompensated Baro-VNAV systems, procedure NA below -2°C or above 54°C.</p>				
AWOS-3PT	SEATTLE CENTER	NORTH BEND TOWER*		GND CON
<b>135.075</b>	<b>127.55 254.35</b>	<b>118.45 (CTAF)</b>		<b>127.1</b>



NW-1, 14 MAY 2026 to 11 JUN 2026

NW-1, 14 MAY 2026 to 11 JUN 2026



CATEGORY	A	B	C	D
RNP 0.11 DA*		394-5/8	378 (400-3/8)	
RNP 0.30 DA#		477-1 1/8	461 (500-1 1/8)	
RNP 0.30 DA		569-1 3/8	553 (600-1 3/8)	

**AUTHORIZATION REQUIRED**

ELEV 17	<b>D</b> TDZE 16
---------	------------------

HIRL Rwy 5-23

MIRL Rwy 13-31

REIL Rwys 13, 23 and 31