

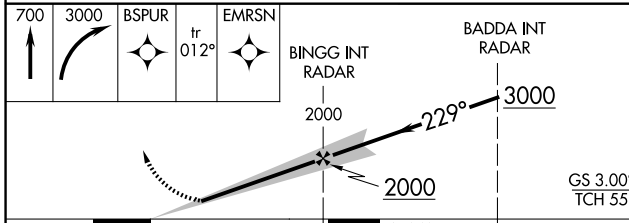
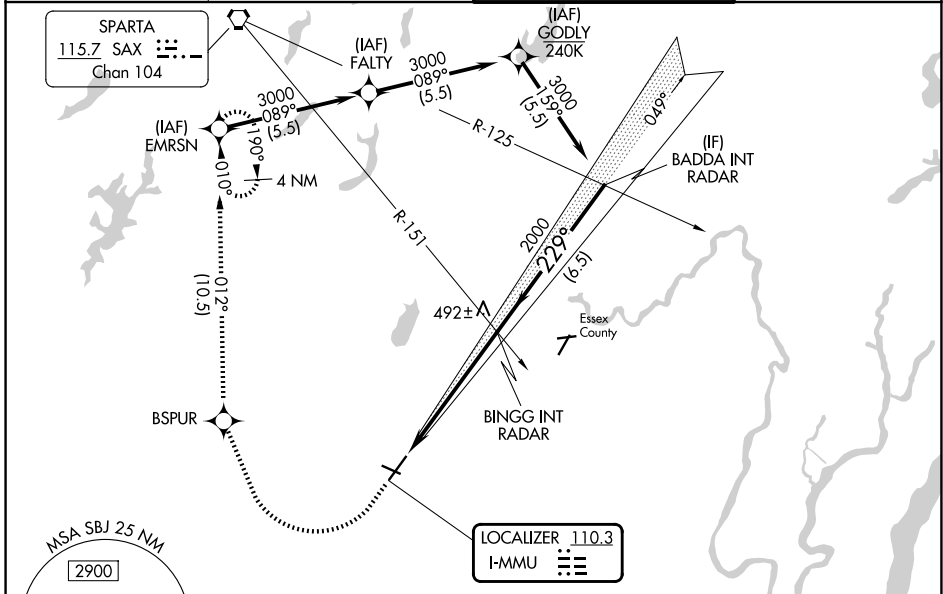
LOC I-MMU <b>110.3</b>	APP CRS <b>229°</b>	Rwy Ldg TDZE Apt Elev	<b>5998</b> <b>184</b> <b>187</b>
---------------------------	------------------------	-----------------------------	---

# ILS Y or LOC Y RWY 23

MORRISTOWN MUNI (MMU)

RNP APCH - GPS.		MALSR	MISSED APPROACH: (Do not exceed 185K until BSPUR) Climb to 700 then climbing right turn to 3000 direct BSPUR and track 012° to EMRSN and hold. *Missed approach requires minimum climb of 201 feet per NM to 1900.
<p>Autopilot coupled approach NA below 875. Circling to Rwy 13, 31 NA at night. For inop ALS, increase S-LOC 23 Cats C/D visibility to 1½ SM.</p>			

ATIS <b>124.25</b>	NEWARK APP CON <b>127.6 379.9</b>	MORRISTOWN TOWER ★ <b>118.10 (CTAF) 353.9</b>	GND CON <b>134.2</b>
-----------------------	--------------------------------------	--	-------------------------



ELEV 187	TDZE 184
REIL Rwy 5 and 31	
HIRL Rwy 5-23	
MIRL Rwy 13-31	
FAF to MAP 5.5 NM	
Knots	60 90 120 150 180
Min:Sec	5:30 3:40 2:45 2:12 1:50

CATEGORY	A	B	C	D
S-ILS 23*		396-½	212 (300-½)	
S-ILS 23		436-½	252 (300-½)	
S-LOC 23	760-½ 576 (600-½)		760-1¼ 576 (600-1¼)	
CIRCLING	860-1 673 (700-1)	900-1 713 (800-1)	1000-2½ 813 (900-2½)	1240-3 1053 (1100-3)

NE-2, 14 MAY 2026 to 11 JUN 2026

NE-2, 14 MAY 2026 to 11 JUN 2026