

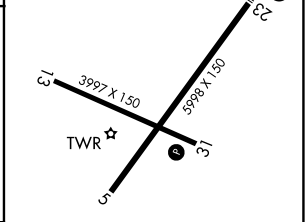
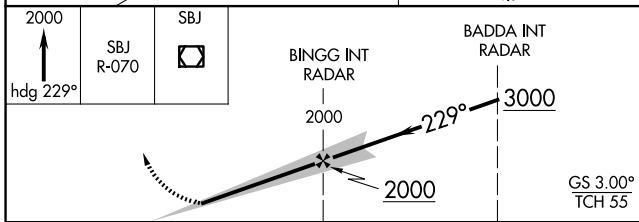
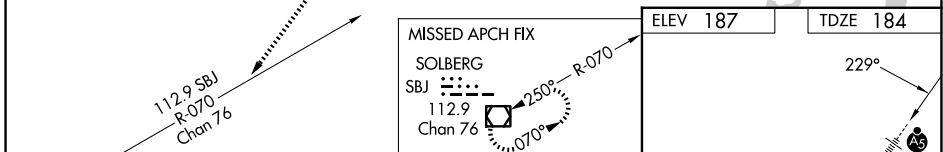
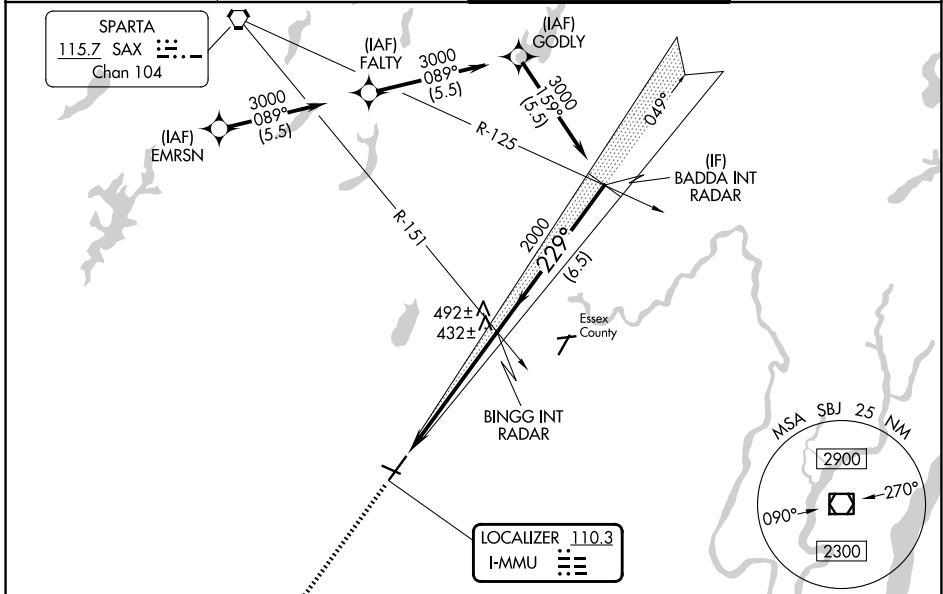
LOC I-MMU 110.3	APP CRS 229°	Rwy Ldg 5998 TDZE 184 Apt Elev 187
---------------------------	------------------------	---

ILS Z or LOC Z RWY 23

MORRISTOWN MUNI (MMU)

RNP APCH - GPS. From EMRSN or FALTY or GODLY.		MALSR 	MISSED APPROACH: Climb to 2000 on heading 229° and on SBJ VOR/DME R-070 to SBJ VOR/DME and hold.
	Autopilot coupled approach NA below 875. Circling Rwy 13, 31 NA at night. For inop ALS, increase S-LOC 23 Cats C/D visibility to 1 3/8 SM.		

ATIS 124.25	NEWARK APP CON 127.6 379.9	MORRISTOWN TOWER ★ 118.1 (CTAF) 353.9	GND CON 134.2
-----------------------	--------------------------------------	--	-------------------------



CATEGORY	A	B	C	D
S-ILS 23		384-1/2	200 (200-1/2)	
S-LOC 23	700-1/2	516 (600-1/2)	700-1	516 (600-1)
CIRCLING	860-1 673 (700-1)	900-1 713 (800-1)	1000-2 1/2 813 (900-2 1/2)	1240-3 1053 (1100-3)
FAF to MAP 5.5 NM				
REIL Rws 5 and 31				
HIRL Rwy 5-23				
MIRL Rwy 13-31				
Knots: 60 90 120 150 180				
Min:Sec: 5:30 3:40 2:45 2:12 1:50				

NE-2, 14 MAY 2026 to 11 JUN 2026

NE-2, 14 MAY 2026 to 11 JUN 2026