

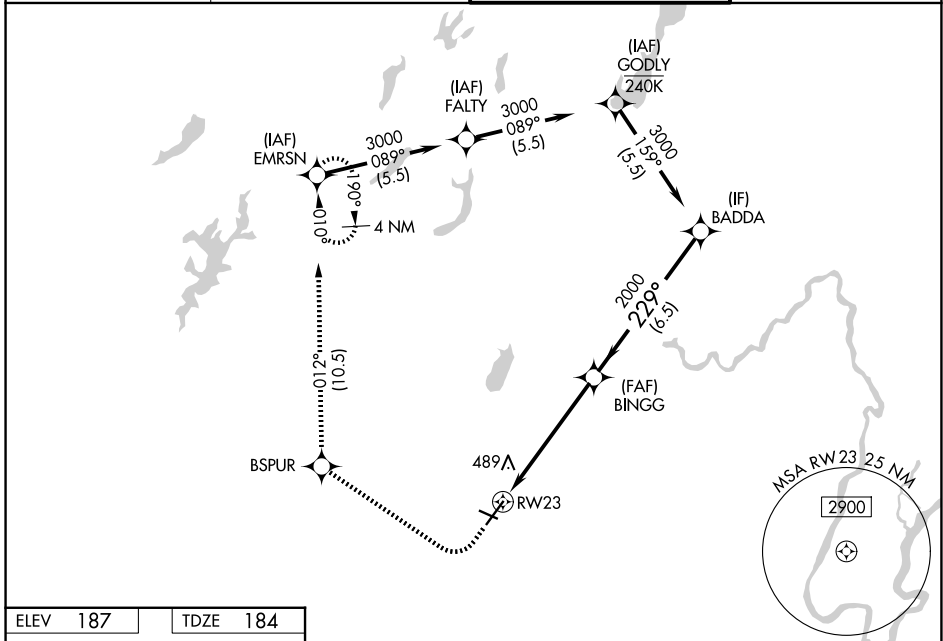
| | | | |
|--|------------------------|---|-------------|
| WAAS CH 49147 W23B | APP CRS 229° | Rwy Ldg TDZE 184 Apt Elev 187 | 5998 |
|--|------------------------|---|-------------|

RNAV (GPS) X RWY 23

MORRISTOWN MUNI (MMU)

| | | |
|--|-----------|--|
| RNP APCH - GPS. ⚠ For uncompensated Baro-VNAV systems, LNAV/VNAV NA below -15°C or above 54°C. Circling to Rwy 13, 31 NA at night. For inop ALS, increase LPV all Cats visibility to ¾ and LNAV Cats C/D visibility to 1¼ SM. | MALSR | MISSED APPROACH: (Do not exceed 185K until BSPUR) Climb to 700 then climbing right turn to 3000 direct BSPUR and track 012° to EMRSN and hold. * Missed approach requires minimum climb of 201 feet per NM to 1900. |
|--|-----------|--|

| | | | |
|-----------------------|--------------------------------------|--|-------------------------|
| ATIS 124.25 | NEWARK APP CON 127.6 379.9 | MORRISTOWN TOWER * 118.1 (CTAF) 353.9 | GND CON 134.2 |
|-----------------------|--------------------------------------|--|-------------------------|



| | |
|----------|----------|
| ELEV 187 | TDZE 184 |
|----------|----------|

| | | | | | |
|--------------|--|--|-------------------------|-------------------------|---|
| | 700 3000 BSPUR tr 012° EMRSN | BINGG 2000 BADDA 3000 GP 3.00° TCH 55 | | | |
| | RWY 23 1.6 NM to RWY 23 1.6 NM 3.9 NM 6.5 NM | A | B | C | D |
| LPV DA * | | 384-½ | 200 (200-½) | | |
| LPV DA | | 436-½ | 252 (300-½) | | |
| LNAV/VNAV DA | | 774-1¼ | 590 (600-1¼) | | |
| LNAV MDA | 760-½ | 576 (600-½) | 760-1¼ | 576 (600-1¼) | |
| CIRCLING | 860-1 673 (700-1) | 900-1 713 (800-1) | 1000-2½ 813 (900-2½) | 1240-3 1053 (1100-3) | |

REIL Rws 5 and 31
 HIRL Rwy 5-23
 MIRL 13-31

NE-2, 14 MAY 2026 to 11 JUN 2026

NE-2, 14 MAY 2026 to 11 JUN 2026