

VIRGINIA BEACH, VIRGINIA

HI-TACAN Z RWY 23L/R

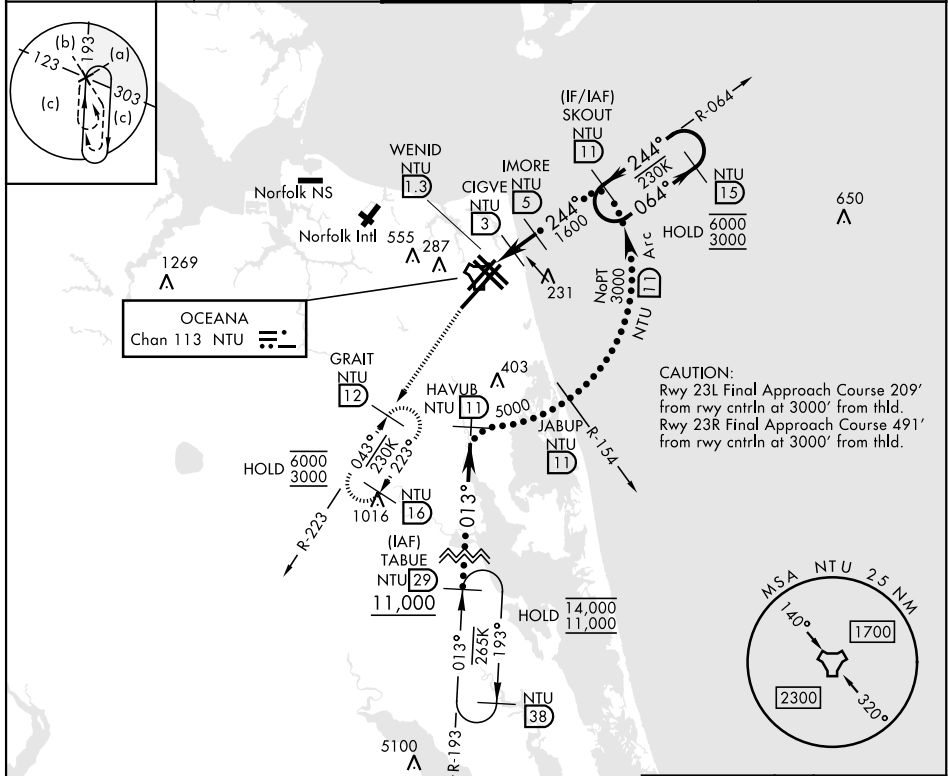
[USN]
OCEANA NAS (APOLLO SOUCEK FLD) (KNTU)

TACAN NTU Chan 113	APCH CRS 244°	Rwy Idg 23L 12,001 23R 7999	23L TDZE 21 23R TDZE 20	Arprt Elev 22
-----------------------	------------------	--	--	-------------------------

ALSF-1
* When ALS inop, increase CAT CDE vis to 1½ miles

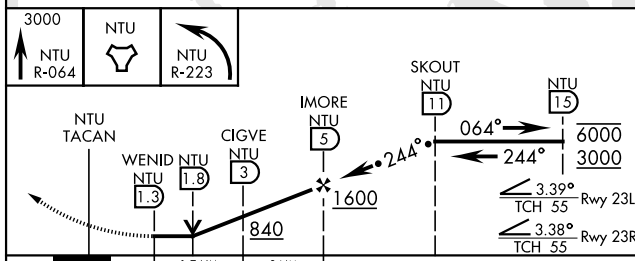
MISSED APPROACH: Climb to 3000 via R-064 to NTU TACAN, then via R-223 to GRAIT and hold.

ATIS 317.6	APP/DEP CON 123.9 266.8	TOWER 127.075 360.2	GND CON 119.6 336.4	ASR/PAR
----------------------	-----------------------------------	-------------------------------	-------------------------------	---------

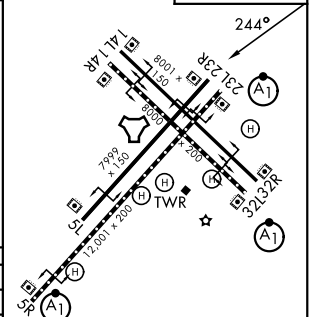


CAUTION:
Rwy 23L Final Approach Course 209° from rwy enrtln at 3000' from thld.
Rwy 23R Final Approach Course 491° from rwy enrtln at 3000' from thld.

EMERG SAFE ALT 100 NM 6100



ELEV	22	TDZE 23L	21
		TDZE 23R	20



CATEGORY	C	D	E
S-23L*	440-¾	419 (500-¾)	
S-23R	440-1½	420 (500-1½)	
CIRCLING	600-1½ 578 (600-1½)	600-2 578 (600-2)	900-3 878 (900-3)

HIRL all Rwy
Wave-Off Lgt all Rwy

VIRGINIA BEACH, VIRGINIA

36°49'N-76°02'W

OCEANA NAS (APOLLO SOUCEK FLD) (KNTU)

Amtd 1 12JUN25

HI-TACAN Z RWY 23L/R

NE-3, 14 MAY 2026 to 11 JUN 2026

NE-3, 14 MAY 2026 to 11 JUN 2026