

HI-TACAN Z RWY 5L

TACAN NTU Chan 113	APCH CRS 043°	Rwy Idg 7999
		TDZE 20
		Arprt Elev 22

[USN]

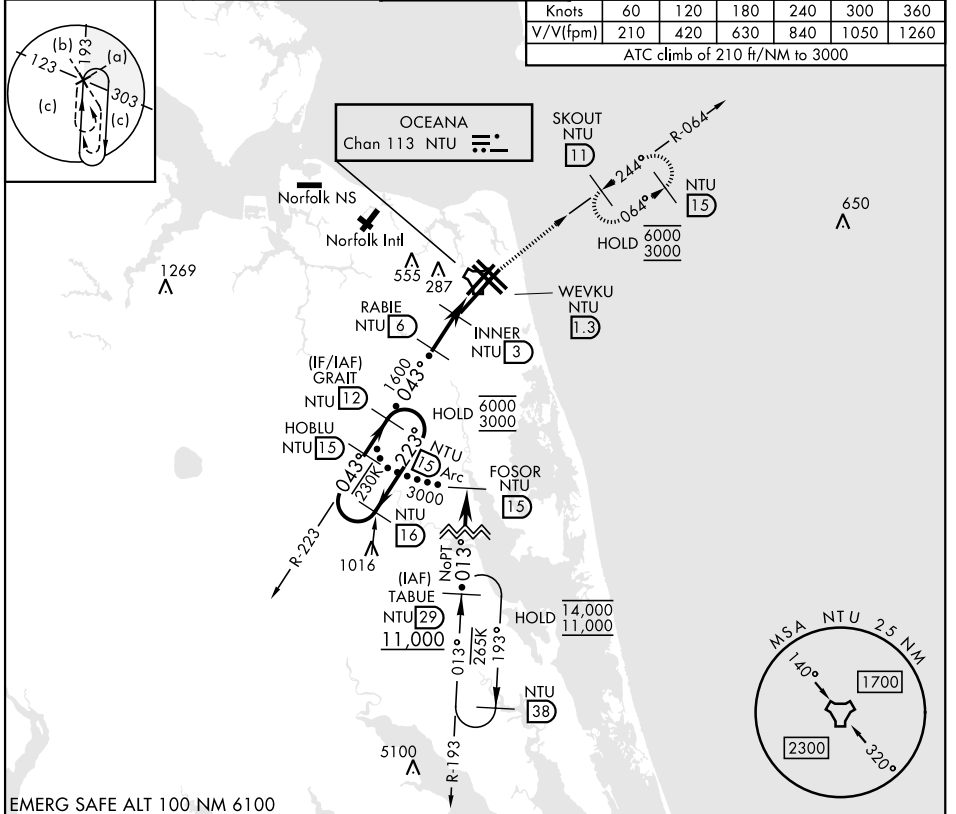
OCEANA NAS (APOLLO SOUCEK FLD) (KNTU)

MISSED APPROACH: Climb to 3000 via R-223 to NTU TACAN then via R-064 to SKOUT and hold.

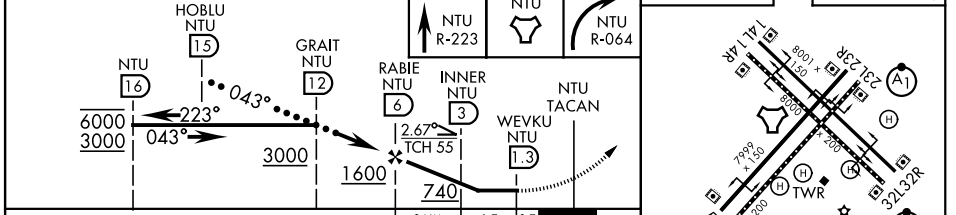
ATIS 317.6	APP/DEP CON 123.9 266.8	TOWER 127.075 360.2	GND CON 119.6 336.4	ASR/PAR
---------------	----------------------------	------------------------	------------------------	---------

Knots	60	120	180	240	300	360
V/V(fpm)	210	420	630	840	1050	1260

ATC climb of 210 ft/NM to 3000



EMERG SAFE ALT 100 NM 6100



CATEGORY	C	D	E
S-5L	420-1½	400 (400-1½)	
CIRCLING	600-1½ 578 (600-1½)	600-2 578 (600-2)	900-3 878 (900-3)

VIRGINIA BEACH, VIRGINIA 36°49'N-76°02'W OCEANA NAS (APOLLO SOUCEK FLD) (KNTU)

Amdt 1 12JUN25

HI-TACAN Z RWY 5L

HIRL all Rwy
Wave-Off Lgt all Rwy

NE-3, 14 MAY 2026 to 11 JUN 2026

NE-3, 14 MAY 2026 to 11 JUN 2026