

VIRGINIA BEACH, VIRGINIA

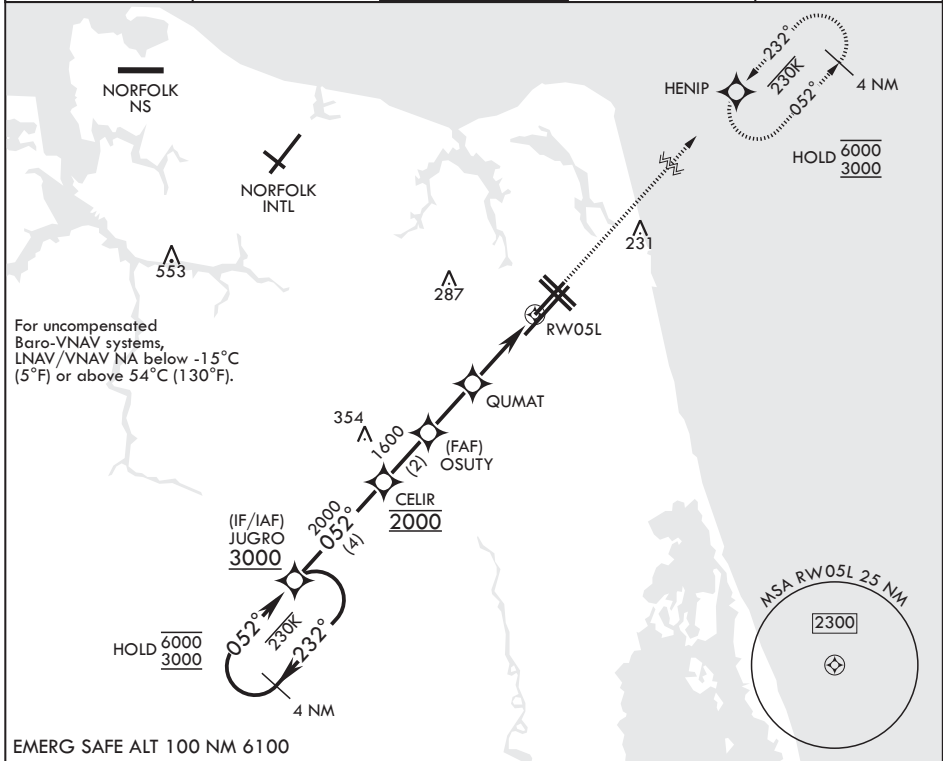
RNAV (GPS) RWY 5L

WAAS CH 63997 W05A	APCH CRS 052°	Rwy ldg TDZE 20 Arpt Elev 22	7999
---------------------------------	-------------------------	--	-------------

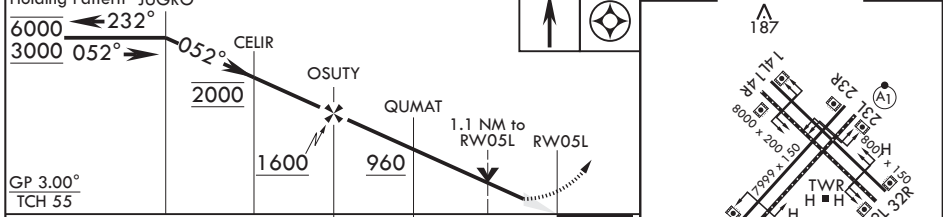
(USN) OCEANA NAS (APOLLO SOUCEK FLD) (KNTU)

RNP APCH-GPS MISSED APPROACH: Climb to 3000 direct HENIP and hold. Continue climb in hold to 3000.

ATIS 317.6	APP CON/DEP CON 123.9 266.8	TOWER 127.075 360.2	GND CON 119.6 336.4	ASR/PAR
----------------------	---------------------------------------	-------------------------------	-------------------------------	---------



EMERG SAFE ALT 100 NM 6100



CATEGORY	A	B	C	D
LPV DA	220- ³ / ₄		200	(200- ³ / ₄)
LNAV/VNAV DA	305- ⁷ / ₈ 285 (300- ⁷ / ₈)	316- ⁷ / ₈ 296 (300- ⁷ / ₈)	324- ⁷ / ₈ 304 (400- ⁷ / ₈)	335- ⁷ / ₈ 315 (400- ⁷ / ₈)
LNAV MDA	440-1	420 (500-1)	440-1 ¹ / ₈	420 (500-1 ¹ / ₈)
CIRCLING	500-1	478 (500-1)	600-1 ¹ / ₂ 578 (600-1 ¹ / ₂)	600-2 578 (600-2)

HIRL all rwys
Wave-Off Lights all rwys

VIRGINIA BEACH, VIRGINIA 36°49'N - 76°02'W OCEANA NAS (APOLLO SOUCEK FLD) (KNTU)

Amdt 5 12JUN25

RNAV (GPS) RWY 5L

NE-3, 14 MAY 2026 to 11 JUN 2026

NE-3, 14 MAY 2026 to 11 JUN 2026