

VIRGINIA BEACH, VIRGINIA

# RNAV (GPS) RWY 5R

WAAS CH <b>69870</b> W05B	APCH CRS <b>052°</b>	Rwy ldg TDZE Arpt Elev	<b>12,001</b> <b>19</b> <b>22</b>
---------------------------------	-------------------------	------------------------------	---

(USN)

OCEANA NAS (APOLLO SOUCEK FLD) (KNTU)

RNP APCH-GPS

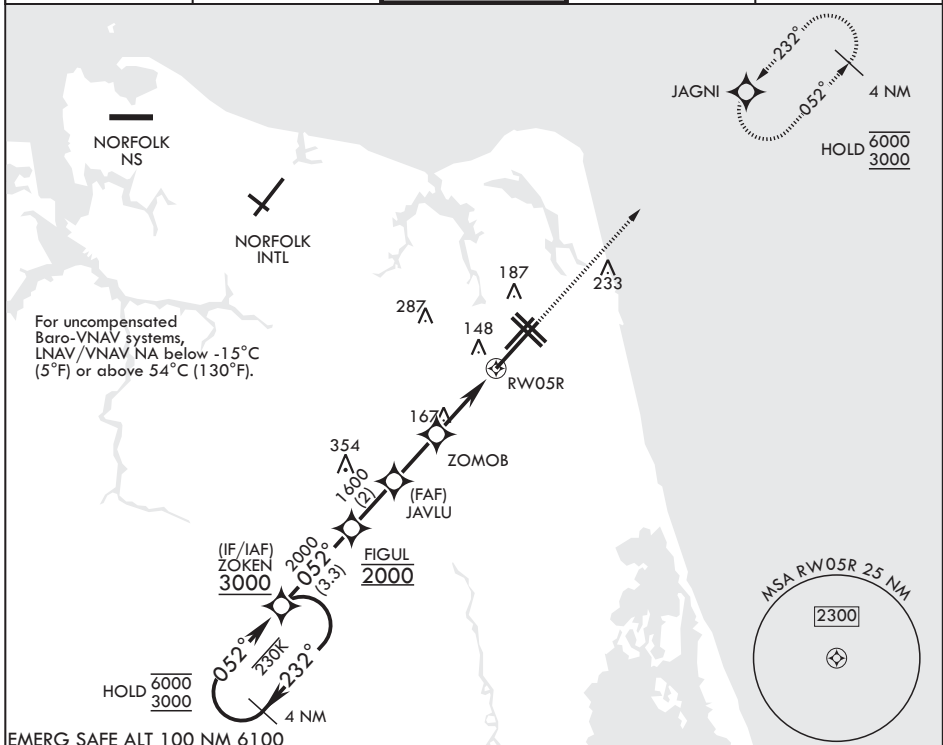
▼ \* When ALS inop increase vis to 3/4 mile.  
 \*\* When ALS inop increase vis to 7/8 mile.  
 \*\*\* When ALS inop, increase CAT AB vis to 1 mile; CAT CD vis to 1 1/8 miles.

ALSF-1



MISSED APPROACH: Climb to 3000 direct JAGNI and hold. Continue climb in hold to 3000.

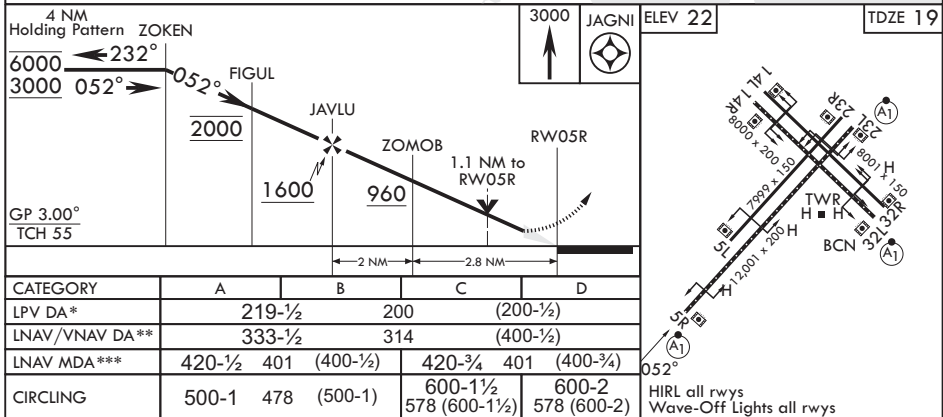
ATIS <b>317.6</b>	APP CON/DEP CON <b>123.9 266.8</b>	TOWER <b>127.075 360.2</b>	GND CON <b>119.6 336.4</b>	ASR/PAR
----------------------	---------------------------------------	-------------------------------	-------------------------------	---------



NE-3, 14 MAY 2026 to 11 JUN 2026

NE-3, 14 MAY 2026 to 11 JUN 2026

EMERG SAFE ALT 100 NM 6100



VIRGINIA BEACH, VIRGINIA

36°49'N - 76°02'W OCEANA NAS (APOLLO SOUCEK FLD) (KNTU)

Amdt 5 12JUN25

# RNAV (GPS) RWY 5R