

# TACAN Y RWY 5R

TACAN NTU Chan <b>113</b>	APCH CRS <b>043°</b>	Rwy Idg TDZE Arprt Elev	<b>12,001</b> <b>19</b> <b>22</b>
------------------------------	-------------------------	-------------------------------	---

[USN]

OCEANA NAS (APOLLO SOUCEK FLD) (KNTU)

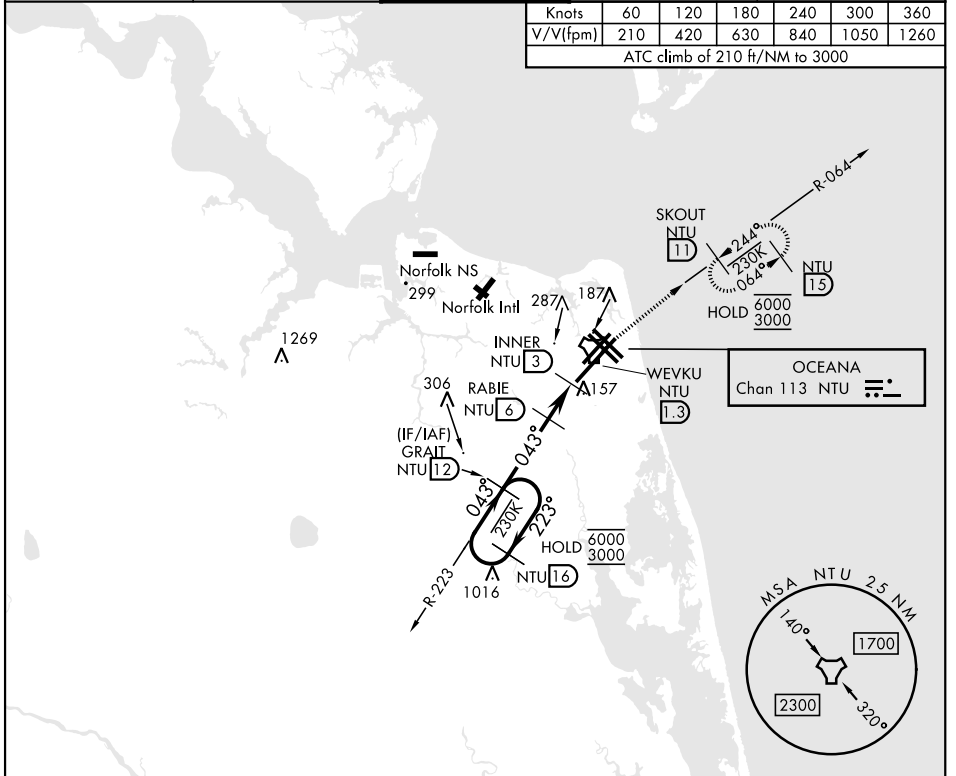
▼ \* When ALS inop, increase CAT AB vis to 1 mile, CAT CD vis to 1½ miles.



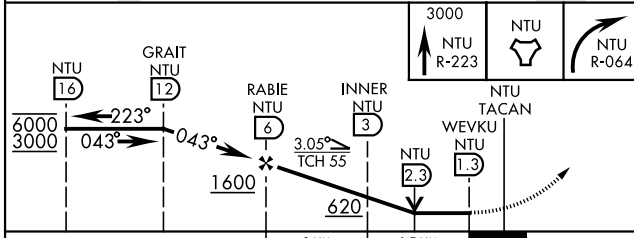
MISSED APPROACH: Climb to 3000 via R-223 to NTU TACAN then via R-064 to SKOUT and hold.

ATIS <b>317.6</b>	APP/DEP CON <b>123.9 266.8</b>	TOWER <b>127.075 360.2</b>	GND CON <b>119.6 336.4</b>	ASR/PAR
----------------------	-----------------------------------	-------------------------------	-------------------------------	---------

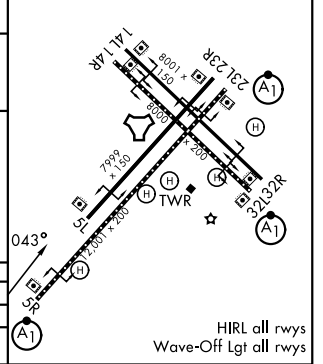
Knots	60	120	180	240	300	360
V/V(fpm)	210	420	630	840	1050	1260
ATC climb of 210 ft/NM to 3000						



EMERG SAFE ALT 100 NM 6100



ELEV	22	TDZE	19
------	----	------	----



CATEGORY	A	B	C	D
S-5R *	420-½	401 (400-½)	420-¾	401 (400-¾)
CIRCLING	500-1	478 (500-1)	600-1½ 578 (600-1½)	600-2 578 (600-2)

HIRL all rwy's  
Wave-Off Lgt all rwy's

# TACAN Y RWY 5R

NE-3, 14 MAY 2026 to 11 JUN 2026

NE-3, 14 MAY 2026 to 11 JUN 2026