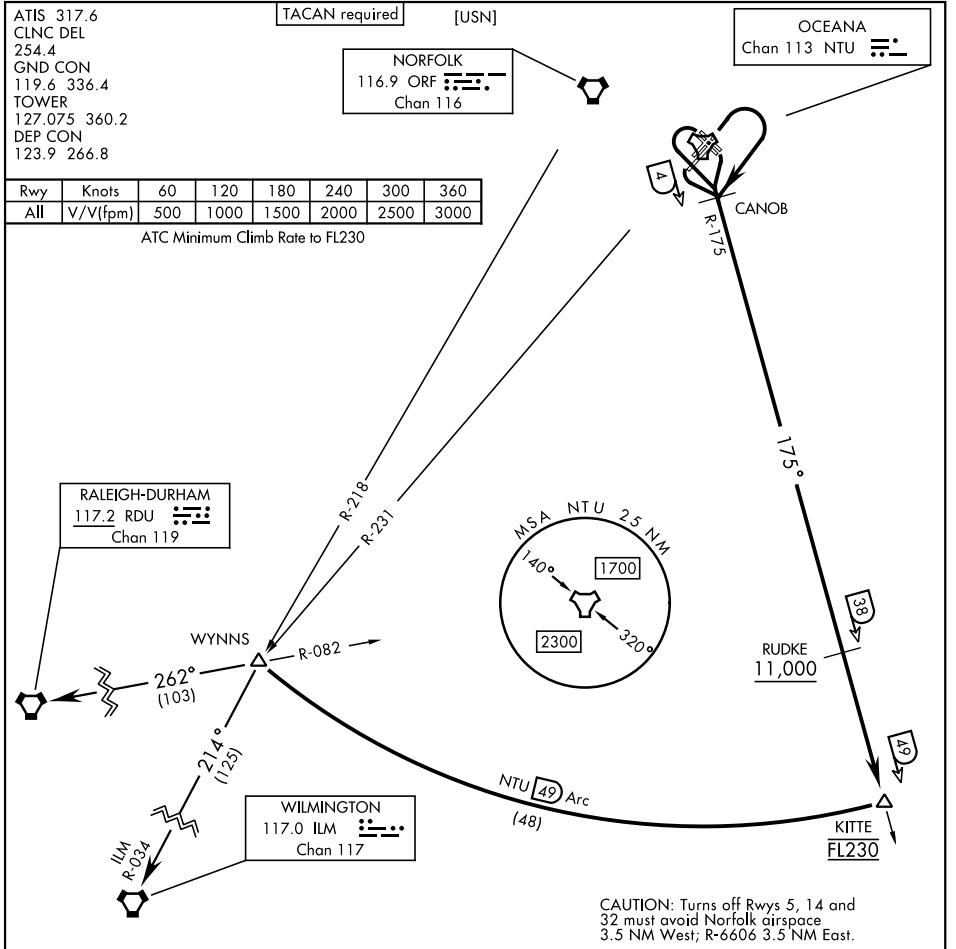


WYNNS FIVE DEPARTURE (WYNNS5.WYNNS)

OCEANA NAS (APOLLO SOUCEK FLD) (KNTU)

VIRGINIA BEACH, VIRGINIA



ATIS 317.6
CLNC DEL 254.4
GND CON 119.6 336.4
TOWER 127.075 360.2
DEP CON 123.9 266.8

TACAN required [USN]

NORFOLK
116.9 ORF
Chan 116

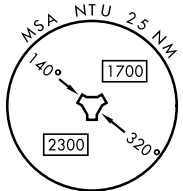
OCEANA
Chan 113 NTU

Rwy	Knots	60	120	180	240	300	360
All	V/V(fpm)	500	1000	1500	2000	2500	3000

ATC Minimum Climb Rate to FL230

RALEIGH-DURHAM
117.2 RDU
Chan 119

WILMINGTON
117.0 ILM
Chan 117



CAUTION: Turns off Rws 5, 14 and 32 must avoid Norfolk airspace 3.5 NM West; R-6606 3.5 NM East.

NE-3, 14 MAY 2026 to 11 JUN 2026

NE-3, 14 MAY 2026 to 11 JUN 2026

DEPARTURE ROUTE DESCRIPTION

TAKEOFF RWY 5L/R or 14L/R: Climbing right turn to intercept NTU TACAN R-175 to CANOB. Thence...

TAKEOFF RWY 23L/R: Climbing left turn to intercept NTU TACAN R-175 to CANOB. Thence...

TAKEOFF RWY 32L/R: Climbing left turn within NTU TACAN 2 DME to intercept NTU R-175. Thence...
...via NTU R-175 to KITTE, arc south of NTU via the 49 mile arc to WYNNS. Cross RUDKE at or above 11,000. Cross KITTE at FL230, or as assigned. Thence...

RALEIGH-DURHAM TRANSITION (WYNNS5.RDU): ...via RDU VORTAC R-082 to RDU.

WILMINGTON TRANSITION (WYNNS5.ILM): ...via ILM VORTAC R-034 to ILM.

WYNNS FIVE DEPARTURE (WYNNS5.WYNNS)

VIRGINIA BEACH, VIRGINIA