

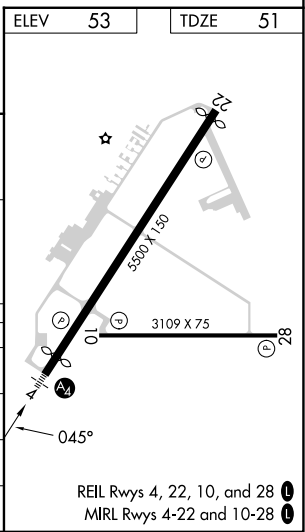
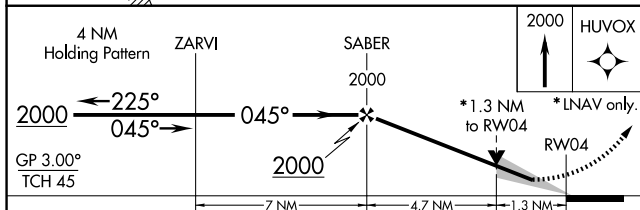
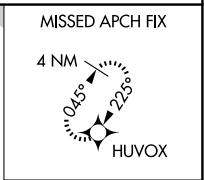
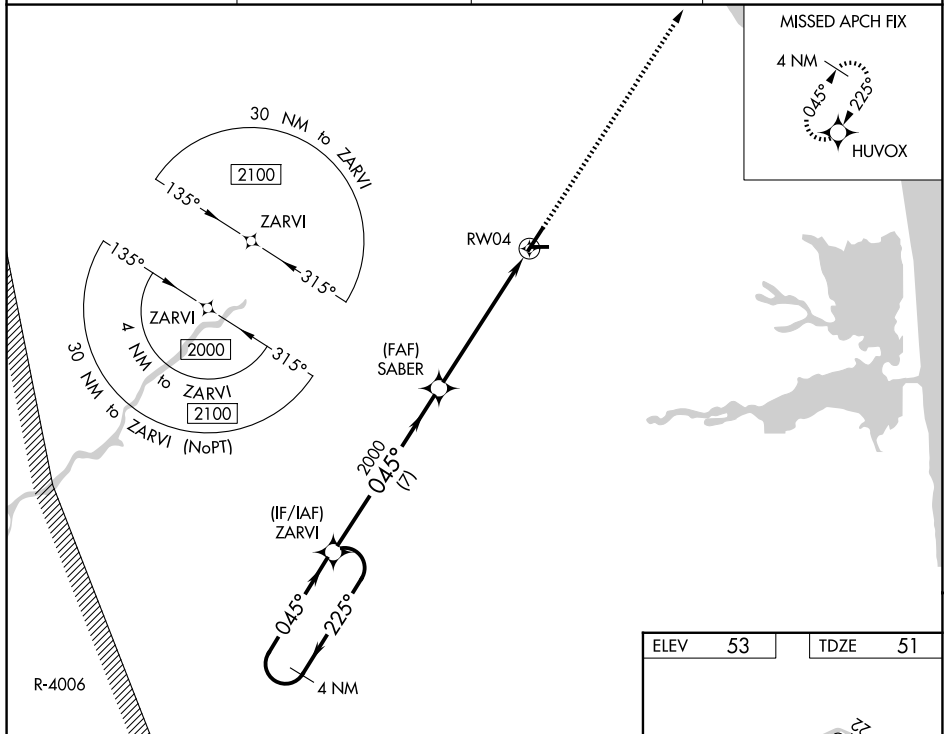
WAAS CH 65621 W04A	APP CRS 045°	Rwy Ldg 5130 TDZE 51 Apt Elev 53
----------------------------------------	------------------------	-------------------------------------------------------------

RNAV (GPS) RWY 4

DELAWARE COASTAL (GED)

RNP APCH - GPS.		MALS	MISSED APPROACH: Climb to 2000 direct HUVOX and hold.
<p>▼ Rwy 4 helicopter visibility reduction below 3/4 SM NA. For uncompensated Baro-VNAV systems, LNAV/VNAV NA below -13°C or above 54°C. For inop ALS, increase LNAV/VNAV all Cats and LNAV Cats C/D visibility 1/4 mile.</p>			

ASOS 118.375	DOVER APP CON 132.425 257.875	GCO 125.55	UNICOM 123.0 (CTAF)
------------------------	-----------------------------------------	----------------------	-------------------------------



CATEGORY	A	B	C	D
LPV DA		355-3/4	304 (400-3/4)	
LNAV/VNAV DA		503-1 1/4	452 (500-1 1/4)	
LNAV MDA	520-3/4	469 (500-3/4)	520-1 1/8	469 (500-1 1/8)
CIRCLING	560-1 507 (600-1)	580-1 527 (600-1)	720-1 3/4 667 (700-1 3/4)	720-2 667 (700-2)

NE-3, 14 MAY 2026 to 11 JUN 2026

NE-3, 14 MAY 2026 to 11 JUN 2026