

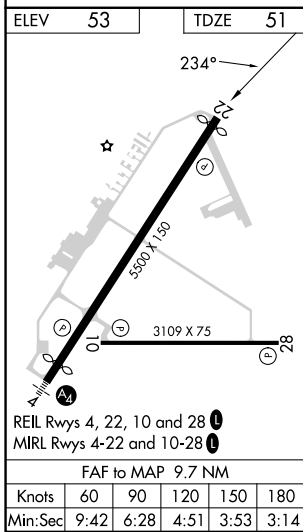
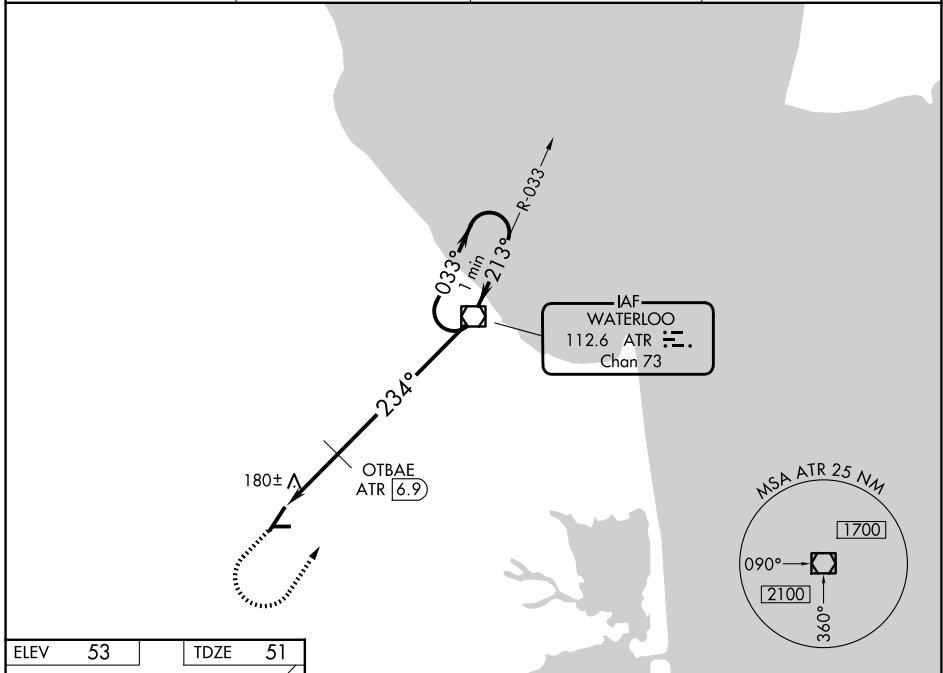
VOR/DME	ATR	APP CRS	Rwy Ldg	5331
112.6		234°	TDZE	51
Chan	73		Apt Elev	53

VOR RWY 22
DELAWARE COASTAL (GED)

⚠ Rwy 22 helicopter visibility reduction below 1 SM NA.
⚠ Rwy 22 Straight-In and Circling minimums NA at night.

MISSED APPROACH: Climb to 800 then climbing left turn to 3000 direct ATR VOR/DME and hold.

ASOS	DOVER APP CON	GCO	UNICOM
118.375	132.425 257.875	125.55	123.0 (CTAF) 0



800	3000	ATR	VGSI and descent angles not coincident (VGSI Angle 3.00/TCH 45).	One Minute Holding Pattern
↑	↻	☐	ATR VOR/DME	
		OTBAE ATR 6.9	033° →	← 213°
		ATR 9.7	234°	3000
		680	2.83°	TCH 52
		← 2.8 NM	6.9 NM	
CATEGORY	A	B	C	D
S-22	680-1	629 (700-1)	680-1¾	629 (700-1¾)
CIRCLING	680-1	627 (700-1)	720-1¾ 667 (700-1¾)	720-2 667 (700-2)
OTBAE FIX MINIMUMS				
S-22	440-1	389 (400-1)	440-1⅛	389 (400-1⅛)
CIRCLING	560-1 507 (600-1)	580-1 527 (600-1)	720-1¾ 667 (700-1¾)	720-2 667 (700-2)

NE-3, 14 MAY 2026 to 11 JUN 2026

NE-3, 14 MAY 2026 to 11 JUN 2026