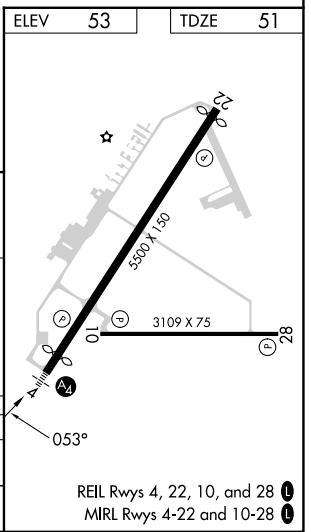
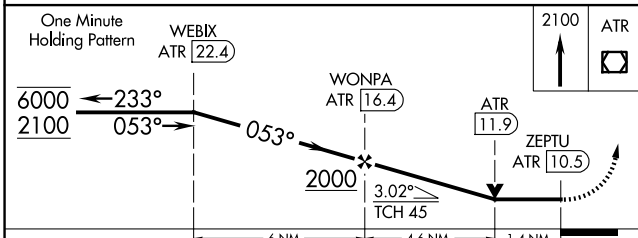
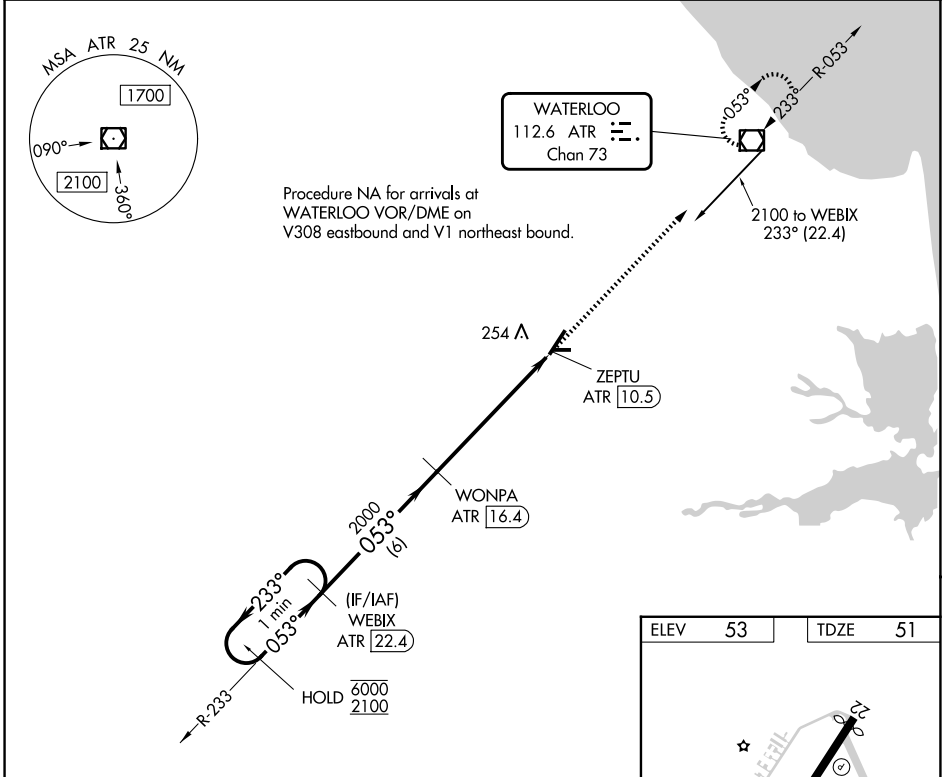


VOR/DME ATR	APP CRS	Rwy Ldg	5130
112.6	053°	TDZE	51
Chan 73		Apt Elev	53

VOR RWY 4
DELAWARE COASTAL (GED)

DME required.	MALS	MISSED APPROACH: Climb to 2100 direct ATR VOR/DME and hold.
<p>▼ Rwy 4 helicopter visibility reduction below 3/4 SM NA. When local altimeter setting not received, use Salisbury altimeter setting increase all MDA 60 feet; increase S-4 Cats C/D visibility 1/8 mile, and Cat C Circling visibility 3/8 SM. Inop table does not apply.</p>		

ASOS 118,375	DOVER APP CON 132,425 257,875	GCO 125,55	UNICOM 123.0 (CTAF)
------------------------	---	----------------------	-------------------------------



CATEGORY	A	B	C	D
S-04	540-1	489 (500-1)	540-1 3/8	489 (500-1 3/8)
CIRCLING	560-1 507 (600-1)	580-1 527 (600-1)	580-1 1/2 527 (600-1 1/2)	620-2 567 (600-2)

NE-3, 14 MAY 2026 to 11 JUN 2026

NE-3, 14 MAY 2026 to 11 JUN 2026